

PRODUCT INFORMATION

Target	CD166
Synonyms	CD166;MEMD
Description	Recombinant human CD166 protein with C-terminal 6×His tag
Delivery	In Stock
Uniprot ID	Q13740
Expression Host	HEK293
Tag	C-6×His Tag
Molecular Characterization	CD166(Trp28-Ala526) 6×His tag
Molecular Weight	The protein has a predicted molecular mass of 56.8 kDa after removal of the signal peptide. The apparent molecular mass of CD166-His is approximately 55-100 kDa due to glycosylation.
Purity	The purity of the protein is greater than 85% as determined by SDS-PAGE and Coomassie blue staining.
Formulation & Reconstitution	Lyophilized from sterile PBS, pH 7.4. Normally 5% - 8% trehalose is added as protectants before lyophilization. Please see Certificate of Analysis for specific instructions of reconstitution.
Storage & Shipping	Store at -20°C to -80°C for 12 months in lyophilized form. After reconstitution, if not intended for use within a month, aliquot and store at -80°C (Avoid repeated freezing and thawing). Lyophilized proteins are shipped at ambient temperature.
Background	This gene encodes activated leukocyte cell adhesion molecule (ALCAM), also known as CD166 (cluster of differentiation 166), which is a member of a subfamily of immunoglobulin receptors with five immunoglobulin-like domains (VVC2C2C2) in the extracellular domain. This protein binds to T-cell differentiation antigene CD6, and is implicated in the processes of cell adhesion and migration. Multiple alternatively spliced transcript variants encoding different isoforms have been found. [provided by RefSeq, Aug 2011]
Usage	Research use only
Conjugate	Unconjugated



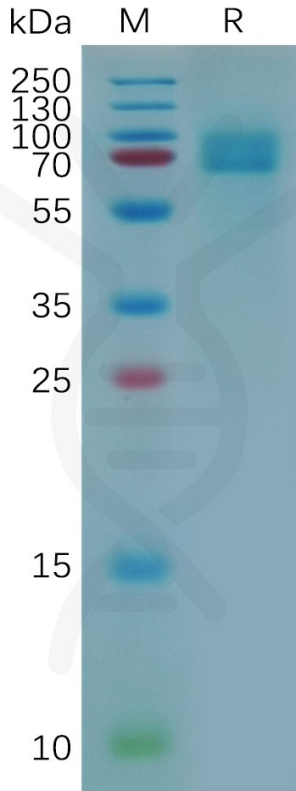


Figure 1. Human CD166 Protein, His Tag on SDS-PAGE under reducing condition.

DIMABIO CONFIDENTIAL

