

## PRODUCT INFORMATION

<b>Target</b>	CD20
<b>Synonyms</b>	B1;Bp35;MS4A1;CVID5;LEU-16;MS4A1;S7
<b>Description</b>	Recombinant Human CD20 protein with N-terminal human Fc
<b>Delivery</b>	In Stock
<b>Uniprot ID</b>	P11836
<b>Expression Host</b>	HEK293
<b>Tag</b>	N-Human Fc Tag
<b>Molecular Characterization</b>	hFc(Glu99-Ala330) CD20(Lys142-Ser188)
<b>Molecular Weight</b>	The protein has a predicted molecular mass of 31.6 kDa after removal of the signal peptide. The apparent molecular mass of hFc-CD20 is approximately 35-55 kDa due to glycosylation.
<b>Purity</b>	The purity of the protein is greater than 95% as determined by SDS-PAGE and Coomassie blue staining.
<b>Formulation &amp; Reconstitution</b>	Lyophilized from sterile PBS, pH 7.4. Normally 5% - 8% trehalose is added as protectants before lyophilization. Please see Certificate of Analysis for specific instructions of reconstitution.
<b>Storage &amp; Shipping</b>	Store at -20°C to -80°C for 12 months in lyophilized form. After reconstitution, if not intended for use within a month, aliquot and store at -80°C (Avoid repeated freezing and thawing). Lyophilized proteins are shipped at ambient temperature.
<b>Background</b>	This gene encodes a member of the membrane-spanning 4A gene family. Members of this nascent protein family are characterized by common structural features and similar intron/exon splice boundaries and display unique expression patterns among hematopoietic cells and nonlymphoid tissues. This gene encodes a B-lymphocyte surface molecule which plays a role in the development and differentiation of B-cells into plasma cells. This family member is localized to 11q12, among a cluster of family members. Alternative splicing of this gene results in two transcript variants which encode the same protein.
<b>Usage</b>	Research use only
<b>Conjugate</b>	Unconjugated



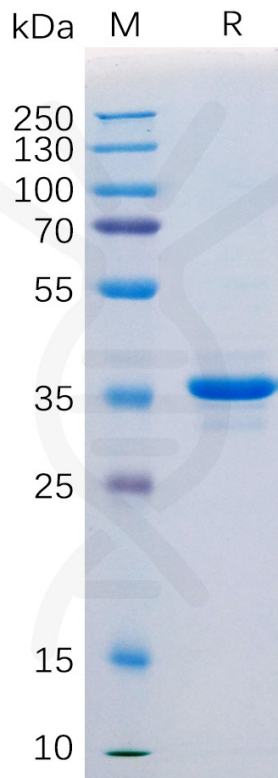


Figure 1. Human CD20 Protein, hFc Tag on SDS-PAGE under reducing condition.

DIMABIO CONFIDENTIAL

