

PRODUCT INFORMATION

Target	CD30 Ligand
Synonyms	CD30-L;CD153;TNFSF8;CD30L;CD30LG;CD153 antigen;CD30 antigen ligand;CD30 Ligand
Description	Recombinant human CD30 Ligand Protein with N-terminal mouse Fc and C-terminal 6×His tag
Delivery	In Stock
Uniprot ID	P32971
Expression Host	HEK293
Tag	N-Mouse Fc and C-6×His Tag
Molecular Characterization	mFc(Pro99-Lys330) CD30 Ligand(Gln63-Asp234) 6×His
Molecular Weight	The protein has a predicted molecular mass of 48.0 kDa after removal of the signal peptide. The apparent molecular mass of mFc-CD30 Ligand-His is approximately 53-70 kDa due to glycosylation.
Purity	The purity of the protein is greater than 95% as determined by SDS-PAGE and Coomassie blue staining.
Formulation & Reconstitution	Lyophilized from sterile PBS, pH 7.4. Normally 5 % - 8% trehalose is added as protectants before lyophilization. Please see Certificate of Analysis for specific instructions of reconstitution.
Storage & Shipping	Store at -20°C to -80°C for 12 months in lyophilized form. After reconstitution, if not intended for use within a month, aliquot and store at -80°C (Avoid repeated freezing and thawing). Lyophilized proteins are shipped at ambient temperature.
Background	The protein encoded by this gene is a cytokine that belongs to the tumor necrosis factor (TNF) ligand family. This cytokine is a ligand for TNFRSF8/CD30, which is a cell surface antigen and a marker for Hodgkin lymphoma and related hematologic malignancies. The engagement of this cytokine expressed on B cell surface plays an inhibitory role in modulating Ig class switch. This cytokine was shown to enhance cell proliferation of some lymphoma cell lines, while to induce cell death and reduce cell proliferation of other lymphoma cell lines. The pleiotropic biologic activities of this cytokine on different CD30 lymphoma cell lines may play a pathophysiological role in Hodgkin's and some non-Hodgkin's lymphomas. Two transcript variants encoding different isoforms have been found for this gene.
Usage	Research use only
Conjugate	Unconjugated



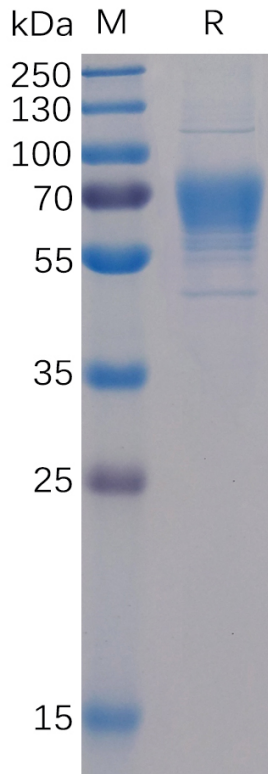


Figure 1. Human CD30 Ligand Protein, mFc-His Tag on SDS-PAGE under reducing condition.

Human CD30 Ligand, mFc-His Tagged protein ELISA

0.2 μg of CD30, His Tagged protein per well

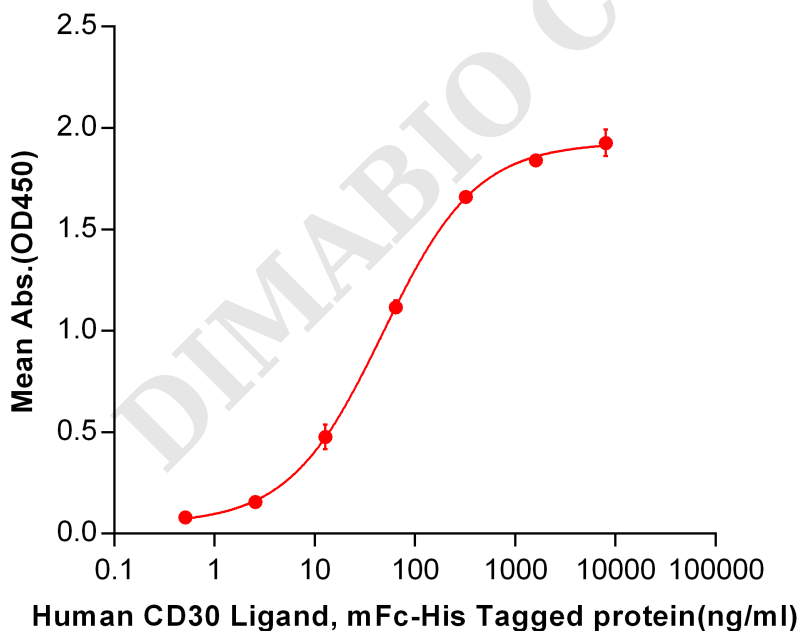


Figure 2. ELISA plate pre-coated by 2 $\mu\text{g}/\text{ml}$ (100 $\mu\text{l}/\text{well}$) Human CD30, His tagged protein PME100481 can bind Human CD30 Ligand, mFc-His tagged protein (PME100041) in a linear range of 2.56-320 ng/ml.

