

PRODUCT INFORMATION

Target	CD30
Synonyms	TNFRSF8;CD30;D1S166E;Ki-1
Description	Recombinant human CD30 protein with C-terminal 6×His tag
Delivery	In Stock
Uniprot ID	P28908
Expression Host	HEK293
Tag	C-6×His Tag
Molecular Characterization	CD30(Phe19-Lys379) 6×His tag
Molecular Weight	The protein has a predicted molecular mass of 39.3 kDa after removal of the signal peptide. The apparent molecular mass of CD30-His is approximately 55-70 kDa due to glycosylation.
Purity	The purity of the protein is greater than 95% as determined by SDS-PAGE and Coomassie blue staining.
Formulation & Reconstitution	Lyophilized from sterile PBS, pH 7.4. Normally 5% - 8% trehalose is added as protectants before lyophilization. Please see Certificate of Analysis for specific instructions of reconstitution.
Storage & Shipping	Store at -20°C to -80°C for 12 months in lyophilized form. After reconstitution, if not intended for use within a month, aliquot and store at -80°C (Avoid repeated freezing and thawing). Lyophilized proteins are shipped at ambient temperature.
Background	The protein encoded by this gene is a member of the TNF-receptor superfamily. This receptor is expressed by activated, but not by resting, T and B cells. TRAF2 and TRAF5 can interact with this receptor, and mediate the signal transduction that leads to the activation of NF-kappaB. This receptor is a positive regulator of apoptosis, and also has been shown to limit the proliferative potential of autoreactive CD8 effector T cells and protect the body against autoimmunity. Two alternatively spliced transcript variants of this gene encoding distinct isoforms have been reported.
Usage	Research use only
Conjugate	Unconjugated



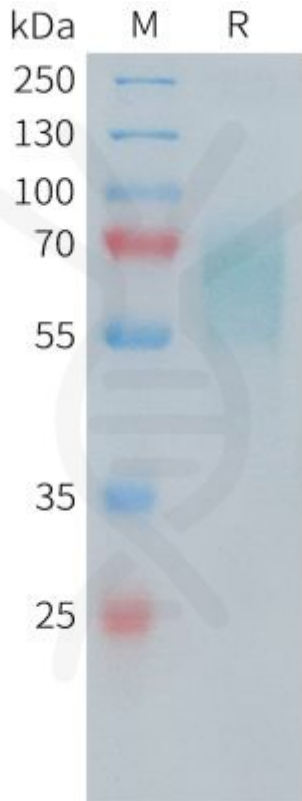


Figure 1. Human CD30 Protein, His Tag on SDS-PAGE under reducing condition.

Human CD30, His Tagged protein ELISA

0.2 μ g of CD30, His Tagged protein per well

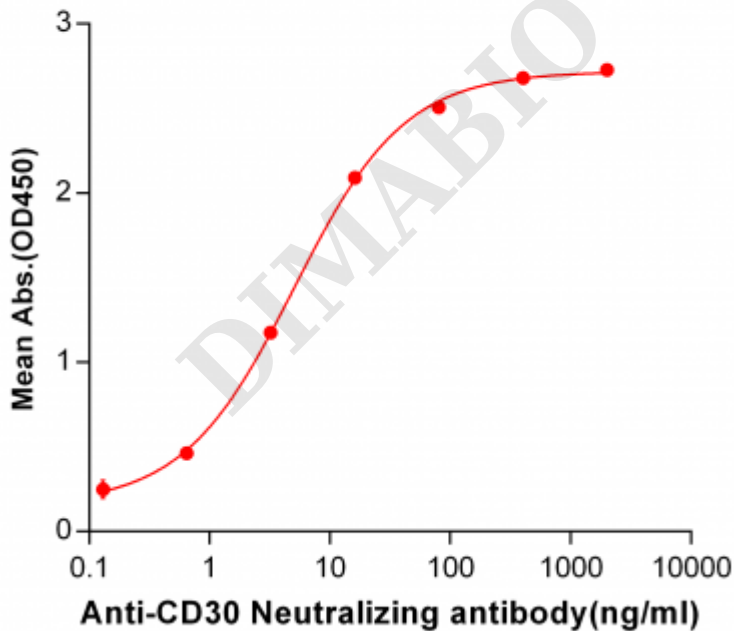


Figure 2. ELISA plate pre-coated by 2 μ g/ml (100 μ l/well) Human CD30, His tagged protein (PME100481) can bind Anti-CD30 Neutralizing antibody ([getskuurl sku="BME100017"]) in a linear range of 0.13-80.0 ng/ml.



Human CD30, His Tagged protein ELISA

0.2 μ g of CD30, His Tagged protein per well

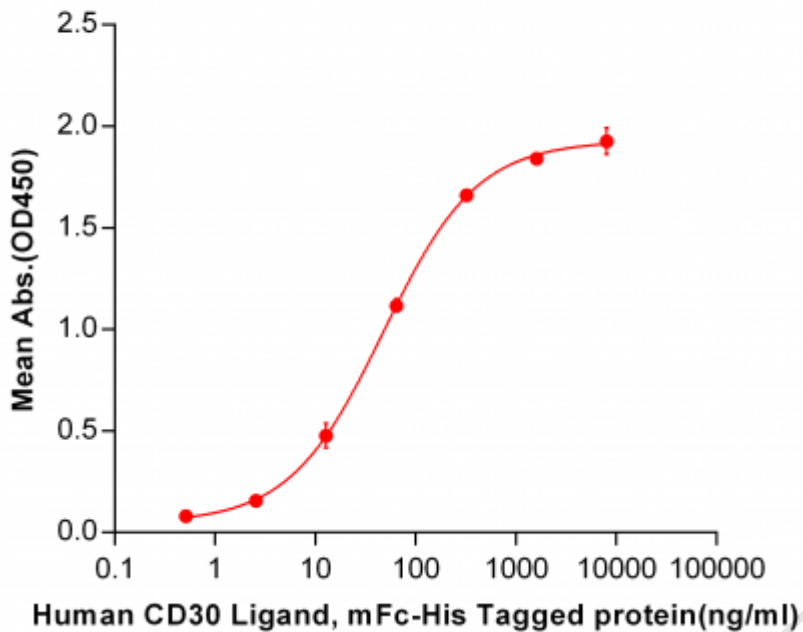


Figure 3. ELISA plate pre-coated by 2 μ g/ml (100 μ l/well) Human CD30, His tagged protein (PME100481) can bind Human CD30 Ligand, mFc-His tagged protein (getskuurl sku="PME100041") in a linear range of 2.56-320 ng/ml.

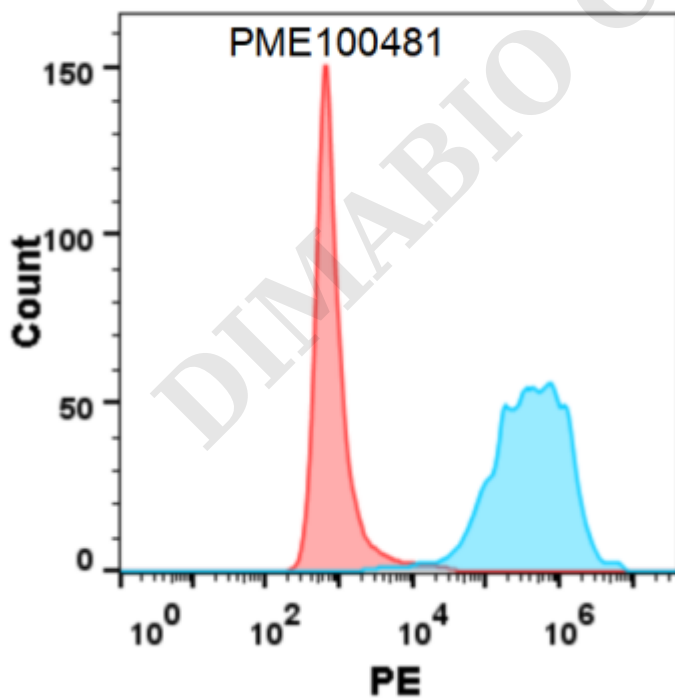


Figure 4. Flow cytometry analysis with 1 μ g/mL Human CD30 Protein, His tag (PME100481) on Expi293 cells transfected with human CD30L (Blue histogram) or Expi293 transfected with irrelevant protein (Red histogram).

