

**PRODUCT INFORMATION**

<b>Target</b>	CD300LF
<b>Synonyms</b>	CD300f;CLM-1;CLM1;IgSF13;IREM-1;IREM1;LMIR3;NKIR
<b>Description</b>	Recombinant Human CD300LF Protein with C-terminal human Fc tag
<b>Delivery</b>	In Stock
<b>Uniprot ID</b>	Q8TDQ1
<b>Expression Host</b>	HEK293
<b>Tag</b>	C-Human Fc Tag
<b>Molecular Characterization</b>	CD300LF(Thr20-Leu155) hFc(Glu99-Ala330)
<b>Molecular Weight</b>	The protein has a predicted molecular mass of 41.5 kDa after removal of the signal peptide. The apparent molecular mass of CD300LF-hFc is approximately 55-70 kDa due to glycosylation.
<b>Purity</b>	The purity of the protein is greater than 95% as determined by SDS-PAGE and Coomassie blue staining.
<b>Formulation &amp; Reconstitution</b>	Lyophilized from sterile PBS, pH 7.4. Normally 5% - 8% trehalose is added as protectants before lyophilization. Please see Certificate of Analysis for specific instructions of reconstitution.
<b>Storage &amp; Shipping</b>	Store at -20°C to -80°C for 12 months in lyophilized form. After reconstitution, if not intended for use within a month, aliquot and store at -80°C (Avoid repeated freezing and thawing). Lyophilized proteins are shipped at ambient temperature.
<b>Background</b>	This gene encodes a member of the CD300 protein family. Members of this family are cell surface glycoproteins with a single IgV-like extracellular domain, and are involved in the regulation of immune response. The encoded protein is an inhibitory receptor. Alternative splicing results in multiple transcript variants. [provided by RefSeq, Jan 2014]
<b>Usage</b>	Research use only



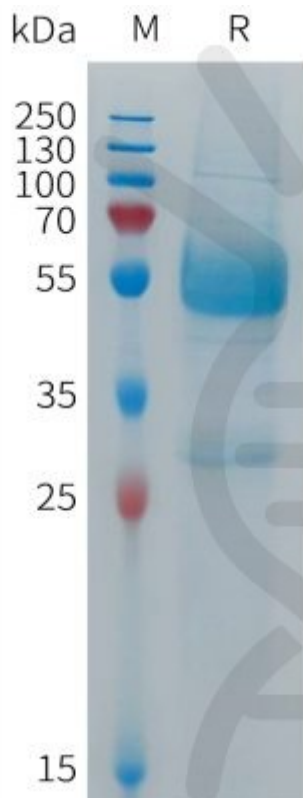


Figure 1. Human CD300LF Protein, hFc Tag on SDS-PAGE under reducing condition.

DIMABIO CONFIDENTIAL

