

**PRODUCT INFORMATION**

<b>Target</b>	CD70
<b>Synonyms</b>	CD70;CD27LG;TNFSF7;TNFSF7G;CD27L
<b>Description</b>	Recombinant human CD70 protein with C-terminal human Fc and 6×His tag
<b>Delivery</b>	In Stock
<b>Uniprot ID</b>	P32970
<b>Expression Host</b>	HEK293
<b>Tag</b>	C-Human Fc and 6×His Tag
<b>Molecular Characterization</b>	CD70(Gln39-Pro193) hFc(Glu99-Ala330) 6×His
<b>Molecular Weight</b>	The protein has a predicted molecular mass of 44.1 kDa after removal of the signal peptide.
<b>Purity</b>	The purity of the protein is greater than 95% as determined by SDS-PAGE and Coomassie blue staining.
<b>Formulation &amp; Reconstitution</b>	Lyophilized from sterile PBS, pH 7.4. Normally 5% - 8% trehalose is added as protectants before lyophilization. Please see Certificate of Analysis for specific instructions of reconstitution.
<b>Storage &amp; Shipping</b>	Store at -20°C to -80°C for 12 months in lyophilized form. After reconstitution, if not intended for use within a month, aliquot and store at -80°C (Avoid repeated freezing and thawing). Lyophilized proteins are shipped at ambient temperature.
<b>Background</b>	The protein encoded by this gene is a cytokine that belongs to the tumor necrosis factor (TNF) ligand family. This cytokine is a ligand for TNFRSF27/CD27. It is a surface antigen on activated, but not on resting, T and B lymphocytes. It induces proliferation of costimulated T cells, enhances the generation of cytolytic T cells, and contributes to T cell activation. This cytokine is also reported to play a role in regulating B-cell activation, cytotoxic function of natural killer cells, and immunoglobulin synthesis.
<b>Usage</b>	Research use only



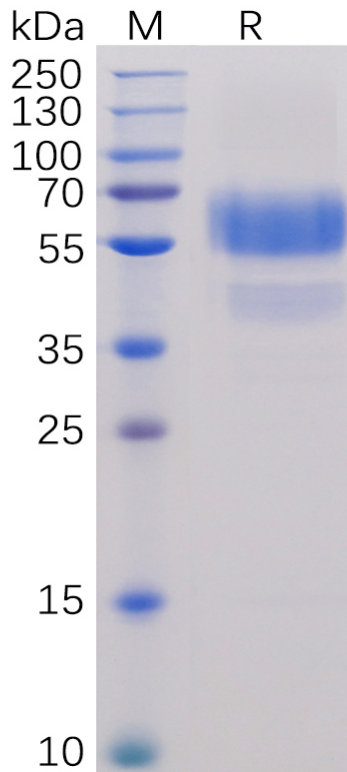


Figure 1. Human CD70 Protein, hFc-His Tag on SDS-PAGE under reducing condition.



Figure 2. Flow cytometry analysis with 15  $\mu\text{g}/\text{mL}$  Human CD70 Protein, hFc-His tag (PME100486) on Expi293 cells transfected with human CD27 (Blue histogram) or Expi293 transfected with irrelevant protein (Red histogram).

DIMABIO CONFIDENTIAL

