

PRODUCT INFORMATION

| | |
|---|---|
| Target | CEACAM5 |
| Synonyms | CEA; CD66e |
| Description | Recombinant human CEACAM5(496-592) Protein with C-terminal human Fc tag |
| Delivery | In Stock |
| Uniprot ID | P06731 |
| Expression Host | HEK293 |
| Tag | C-Human Fc tag |
| Molecular Characterization | CEACAM5(Val496-Gly592) hFc(Glu99-Ala330) |
| Molecular Weight | The protein has a predicted molecular mass of 36.7 kDa after removal of the signal peptide. The apparent molecular mass of CEACAM5(496-592)-hFc is approximately 35-70 kDa due to glycosylation. |
| Purity | The purity of the protein is greater than 95% as determined by SDS-PAGE and Coomassie blue staining. |
| Formulation & Reconstitution | Lyophilized from sterile PBS, pH 7.4. Normally 5% - 8% trehalose is added as protectants before lyophilization. Please see Certificate of Analysis for specific instructions of reconstitution. |
| Storage & Shipping | Store at -20°C to -80°C for 12 months in lyophilized form. After reconstitution, if not intended for use within a month, aliquot and store at -80°C (Avoid repeated freezing and thawing). Lyophilized proteins are shipped at ambient temperature. |
| Background | This gene encodes a cell surface glycoprotein that represents the founding member of the carcinoembryonic antigen (CEA) family of proteins. The encoded protein is used as a clinical biomarker for gastrointestinal cancers and may promote tumor development through its role as a cell adhesion molecule. Additionally, the encoded protein may regulate differentiation, apoptosis, and cell polarity. This gene is present in a CEA family gene cluster on chromosome 19. Alternative splicing results in multiple transcript variants. [provided by RefSeq, Jul 2015] |
| Usage | Research use only |
| Conjugate | Unconjugated |



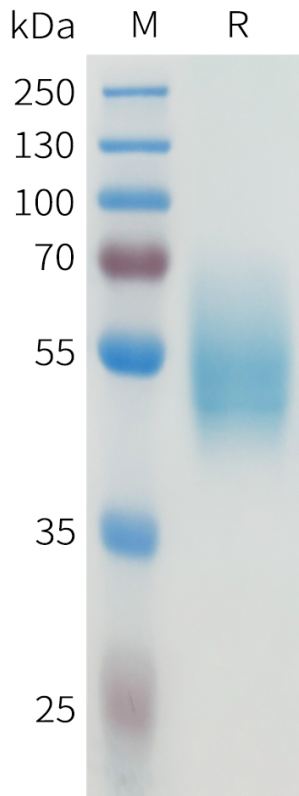


Figure 1. Human CEACAM5(496-592) Protein, hFc Tag on SDS-PAGE under reducing condition.

DIMABIO CONFIDENTIAL

