

PRODUCT INFORMATION

Target	CHODL
Synonyms	C21orf68;MT75;PRED12
Description	Recombinant Human CHODL with C-terminal human Fc tag
Delivery	In Stock
Uniprot ID	Q9H9P2
Expression Host	HEK293
Tag	C-Human Fc Tag
Molecular Characterization	CHODL(Arg22-Asn216) hFc(Glu99-Ala330)
Molecular Weight	The protein has a predicted molecular mass of 48.1 kDa after removal of the signal peptide. The apparent molecular mass of CHODL-hFc is approximately 70-100 kDa due to glycosylation.
Purity	The purity of the protein is greater than 95% as determined by SDS-PAGE and Coomassie blue staining.
Formulation & Reconstitution	Lyophilized from sterile PBS, pH 7.4. Normally 5% - 8% trehalose is added as protectants before lyophilization. Please see Certificate of Analysis for specific instructions of reconstitution.
Storage & Shipping	Store at -20°C to -80°C for 12 months in lyophilized form. After reconstitution, if not intended for use within a month, aliquot and store at -80°C (Avoid repeated freezing and thawing). Lyophilized proteins are shipped at ambient temperature.
Background	This gene encodes a type I membrane protein with a carbohydrate recognition domain characteristic of C-type lectins in its extracellular portion. In other proteins, this domain is involved in endocytosis of glycoproteins and exogenous sugar-bearing pathogens. This protein localizes predominantly to the perinuclear region. Several transcript variants encoding a few different isoforms have been found for this gene. [provided by RefSeq, Feb 2011]
Usage	Research use only
Conjugate	Unconjugated



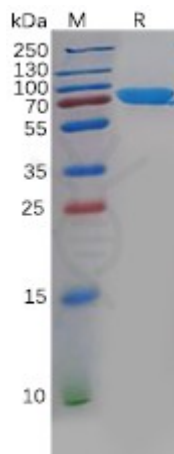


Figure 1. Human CHODL Protein, hFc Tag on SDS-PAGE under reducing condition.

DIMABIO CONFIDENTIAL

