

PRODUCT INFORMATION

Target	CLDN2
Synonyms	Claudin-2;SP82
Description	Recombinant human CLDN2 protein with C-terminal human Fc tag
Delivery	In Stock
Uniprot ID	P57739
Expression Host	HEK293
Tag	C-Human Fc Tag
Molecular Characterization	CLDN2(Ser29-Gln78) hFc(Glu99-Ala330)
Molecular Weight	The protein has a predicted molecular mass of 31.4 kDa after removal of the signal peptide. The apparent molecular mass of CLDN2-hFc is approximately 25-35 kDa due to glycosylation.
Purity	The purity of the protein is greater than 95% as determined by SDS-PAGE and Coomassie blue staining.
Formulation & Reconstitution	Lyophilized from sterile PBS, pH 7.4. Normally 5% - 8% trehalose is added as protectants before lyophilization. Please see Certificate of Analysis for specific instructions of reconstitution.
Storage & Shipping	Store at -20°C to -80°C for 12 months in lyophilized form. After reconstitution, if not intended for use within a month, aliquot and store at -80°C (Avoid repeated freezing and thawing). Lyophilized proteins are shipped at ambient temperature.
Background	This gene product belongs to the claudin protein family whose members have been identified as major integral membrane proteins localized exclusively at tight junctions. Claudins are expressed in an organ-specific manner and regulate tissue-specific physiologic properties of tight junctions. This protein is expressed in the intestine. Alternatively spliced transcript variants with different 5' untranslated region have been found for this gene.[provided by RefSeq, Jan 2010]
Usage	Research use only



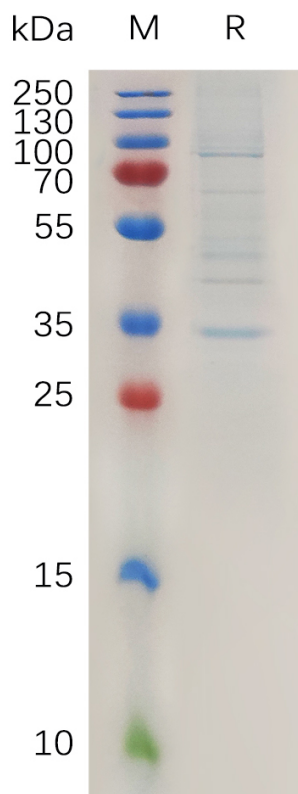


Figure 1. Human CLDN2 Protein, hFc Tag on SDS-PAGE under reducing condition.

DIMABIO CONFIDENTIAL

