

PRODUCT INFORMATION

Target	CLDN4
Synonyms	CPE-R;CPER;CPETR;CPETR1;hCPE-R;WBSCR8
Description	Recombinant human CLDN4(145-157) Protein with C-terminal mouse Fc tag
Delivery	In Stock
Uniprot ID	O14493
Expression Host	HEK293
Tag	C-mouse Fc Tag
Molecular Characterization	CLDN4(Gln145-Lys157) mFc(Pro99-Lys330)
Molecular Weight	The protein has a predicted molecular mass of 27.7 kDa after removal of the signal peptide. The apparent molecular mass of CLDN4(145-157)-mFc is approximately 25-35 kDa due to glycosylation.
Purity	The purity of the protein is greater than 95% as determined by SDS-PAGE and Coomassie blue staining.
Formulation & Reconstitution	Lyophilized from sterile PBS, pH 7.4. Normally 5% - 8% trehalose is added as protectants before lyophilization. Please see Certificate of Analysis for specific instructions of reconstitution.
Storage & Shipping	Store at -20°C to -80°C for 12 months in lyophilized form. After reconstitution, if not intended for use within a month, aliquot and store at -80°C (Avoid repeated freezing and thawing). Lyophilized proteins are shipped at ambient temperature.
Background	The protein encoded by this intronless gene belongs to the claudin family. Claudins are integral membrane proteins that are components of the epithelial cell tight junctions, which regulate movement of solutes and ions through the paracellular space. This protein is a high-affinity receptor for Clostridium perfringens enterotoxin (CPE) and may play a role in internal organ development and function during pre- and postnatal life. This gene is deleted in Williams-Beuren syndrome, a neurodevelopmental disorder affecting multiple systems. [provided by RefSeq, Sep 2013]
Usage	Research use only
Conjugate	Unconjugated



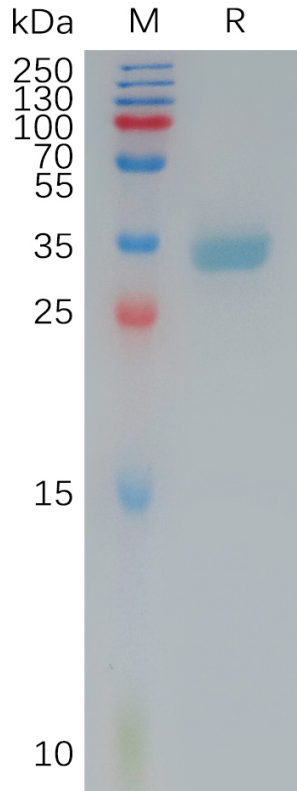


Figure 1. Human CLDN4(145-157) Protein, mFc Tag on SDS-PAGE under reducing condition.

DIMABIO CONFIDENTIAL

