

PRODUCT INFORMATION

Target	CLEC10A
Synonyms	HML; MGL; HML2; CD301; CLECSF13; CLECSF14
Description	Recombinant human CLEC10A Protein with N-terminal human Fc tag
Delivery	In Stock
Uniprot ID	Q8IUN9
Expression Host	HEK293
Tag	N-Human Fc tag
Molecular Characterization	hFc(Glu99-Ala330) CLEC10A(Gln61-His316)
Molecular Weight	The protein has a predicted molecular mass of 54.9 kDa after removal of the signal peptide. The apparent molecular mass of hFc-CLEC10A is approximately 55-70 kDa due to glycosylation.
Purity	The purity of the protein is greater than 95% as determined by SDS-PAGE and Coomassie blue staining.
Formulation & Reconstitution	Lyophilized from sterile PBS, pH 7.4. Normally 5% - 8% trehalose is added as protectants before lyophilization. Please see Certificate of Analysis for specific instructions of reconstitution.
Storage & Shipping	Store at -20°C to -80°C for 12 months in lyophilized form. After reconstitution, if not intended for use within a month, aliquot and store at -80°C (Avoid repeated freezing and thawing). Lyophilized proteins are shipped at ambient temperature.
Background	This gene encodes a member of the C-type lectin/C-type lectin-like domain (CTL/CTLD) superfamily. Members of this family share a common protein fold and have diverse functions, such as cell adhesion, cell-cell signalling, glycoprotein turnover, and roles in inflammation and immune response. The encoded type 2 transmembrane protein may function as a cell surface antigen. Two transcript variants encoding distinct isoforms have been identified for this gene. [provided by RefSeq, Jul 2008]
Usage	Research use only
Conjugate	Unconjugated



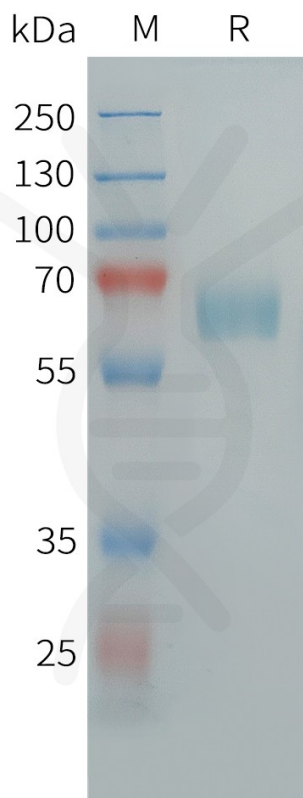


Figure 1. Human CLEC10A Protein, hFc Tag on SDS-PAGE under reducing condition.

DIMABIO CONFIDENTIAL

