

**PRODUCT INFORMATION**

|   |   |
|---|---|
| <b>Target</b>                           | CLEC4A  |
| <b>Synonyms</b>                         | CD367;CLECSF6;DCIR;DDB27;HDCGC13P;hDCIR;LLIR  |
| <b>Description</b>                      | Recombinant Human CLEC4A Protein with N-terminal human Fc tag   |
| <b>Delivery</b>                         | In Stock  |
| <b>Uniprot ID</b>                       | Q9UMR7  |
| <b>Expression Host</b>                  | HEK293  |
| <b>Tag</b>                              | N-Human Fc Tag  |
| <b>Molecular Characterization</b>       | hFc(Glu99-Ala330) CLEC4A(Gln70-Leu237)  |
| <b>Molecular Weight</b>                 | The protein has a predicted molecular mass of 46.0 kDa after removal of the signal peptide. The apparent molecular mass of hFc-CLEC4A is approximately 55-70 kDa due to glycosylation.  |
| <b>Purity</b>                           | The purity of the protein is greater than 95% as determined by SDS-PAGE and Coomassie blue staining.  |
| <b>Formulation &amp; Reconstitution</b> | Lyophilized from sterile PBS, pH 7.4. Normally 5% - 8% trehalose is added as protectants before lyophilization. Please see Certificate of Analysis for specific instructions of reconstitution.   |
| <b>Storage &amp; Shipping</b>           | Store at -20°C to -80°C for 12 months in lyophilized form. After reconstitution, if not intended for use within a month, aliquot and store at -80°C (Avoid repeated freezing and thawing). Lyophilized proteins are shipped at ambient temperature.   |
| <b>Background</b>                       | This gene encodes a member of the C-type lectin/C-type lectin-like domain (CTL/CTLD) superfamily. Members of this family share a common protein fold and have diverse functions, such as cell adhesion, cell-cell signalling, glycoprotein turnover, and roles in inflammation and immune response. The encoded type 2 transmembrane protein may play a role in inflammatory and immune response. Multiple transcript variants encoding distinct isoforms have been identified for this gene. This gene is closely linked to other CTL/CTLD superfamily members on chromosome 12p13 in the natural killer gene complex region. [provided by RefSeq, Jul 2008] |
| <b>Usage</b>                            | Research use only   |
| <b>Conjugate</b>                        | Unconjugated  |



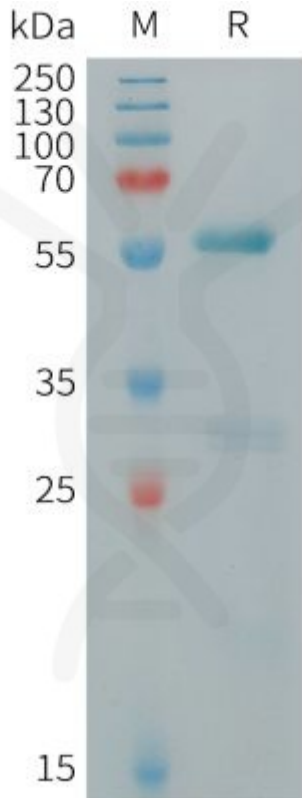


Figure 1. Human CLEC4A Protein, hFc Tag on SDS-PAGE under reducing condition.

DIMABIO CONFIDENTIAL

