

**PRODUCT INFORMATION**

<b>Target</b>	CRTAM
<b>Synonyms</b>	CD355
<b>Description</b>	Recombinant human CRTAM Protein with C-terminal mouse Fc tag
<b>Delivery</b>	In Stock
<b>Uniprot ID</b>	O95727
<b>Expression Host</b>	HEK293
<b>Tag</b>	C-mouse Fc tag
<b>Molecular Characterization</b>	CRTAM(Ser18-Gly287) mFc(Pro99-Lys330)
<b>Molecular Weight</b>	The protein has a predicted molecular mass of 56.3 kDa after removal of the signal peptide. The apparent molecular mass of CRTAM-mFc is approximately 70-100 kDa due to glycosylation.
<b>Purity</b>	The purity of the protein is greater than 95% as determined by SDS-PAGE and Coomassie blue staining.
<b>Formulation &amp; Reconstitution</b>	Lyophilized from sterile PBS, pH 7.4. Normally 5 % - 8% trehalose is added as protectants before lyophilization. Please see Certificate of Analysis for specific instructions of reconstitution.
<b>Storage &amp; Shipping</b>	Store at -20°C to -80°C for 12 months in lyophilized form. After reconstitution, if not intended for use within a month, aliquot and store at -80°C (Avoid repeated freezing and thawing). Lyophilized proteins are shipped at ambient temperature.
<b>Background</b>	The CRTAM gene is upregulated in CD4 (see MIM 186940)-positive and CD8 (see CD8A; MIM 186910)-positive T cells and encodes a type I transmembrane protein with V and C1-like Ig domains (Yeh et al., 2008 [PubMed 18329370]). [supplied by OMIM, Feb 2009]
<b>Usage</b>	Research use only
<b>Conjugate</b>	Unconjugated



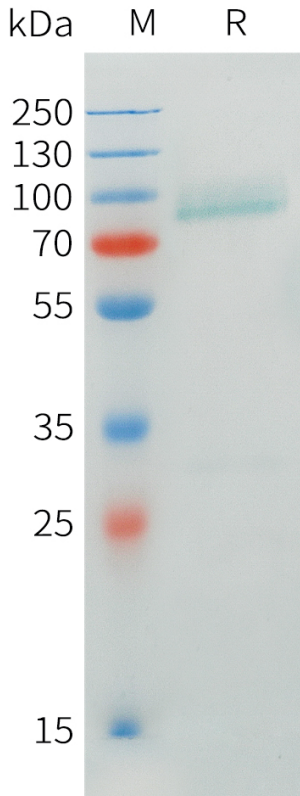


Figure 1. Human CRTAM Protein, mFc Tag on SDS-PAGE under reducing condition.

### Human CRTAM, mFc Tagged protein ELISA

0.2  $\mu$ g of Human CRTAM, mFc tagged protein per well

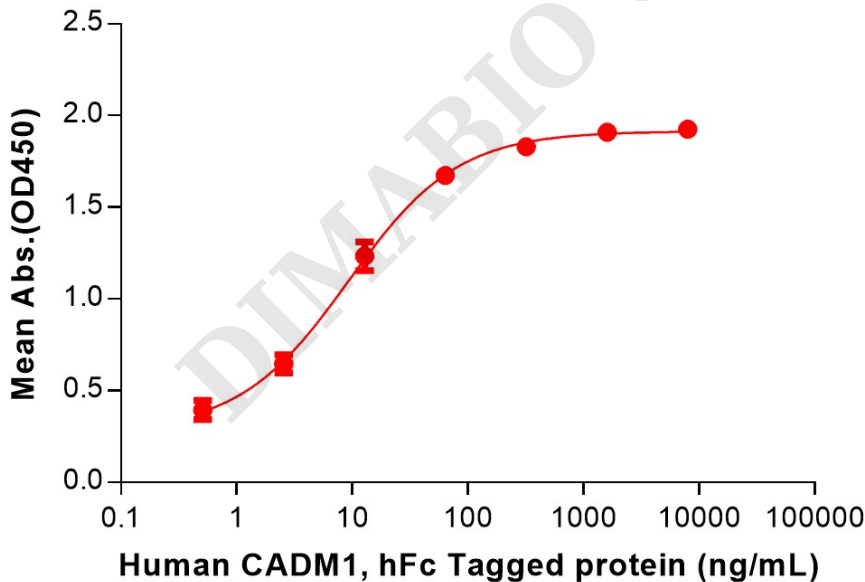


Figure 2. ELISA plate pre-coated by 2  $\mu$ g/mL (100  $\mu$ L/well) Human CRTAM Protein, mFc Tag (PME101547) can bind Human CADM1 Protein, hFc Tag (PME101544) in a linear range of 0.51-64 ng/mL.



### Human CRTAM, mFc Tagged protein ELISA

0.2  $\mu\text{g}$  of Human CRTAM, mFc tagged protein per well

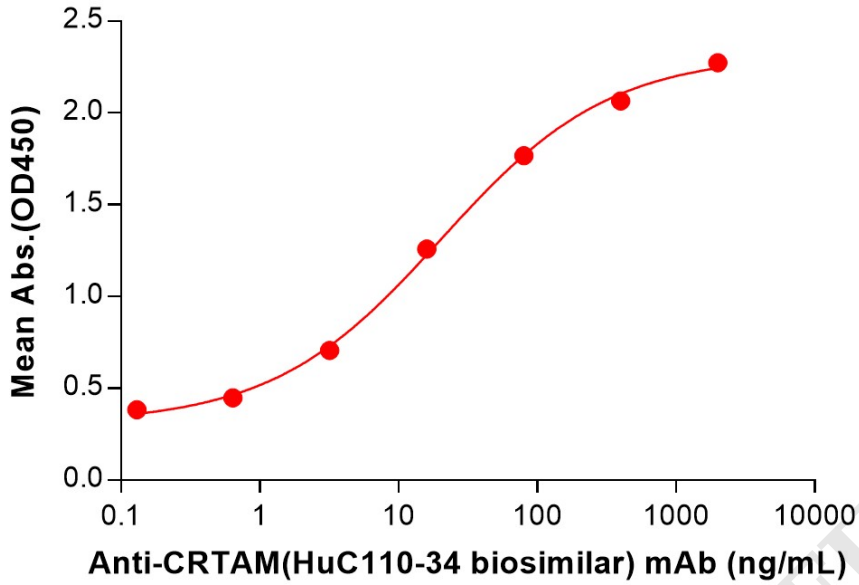


Figure 3. ELISA plate pre-coated by 2  $\mu\text{g}/\text{mL}$  (100  $\mu\text{L}/\text{well}$ ) Human CRTAM Protein, mFc Tag (PME101547) can bind Anti-CRTAM(HuC110-34 biosimilar) mAb (BME100227) in a linear range of 3.20-400 ng/mL.

