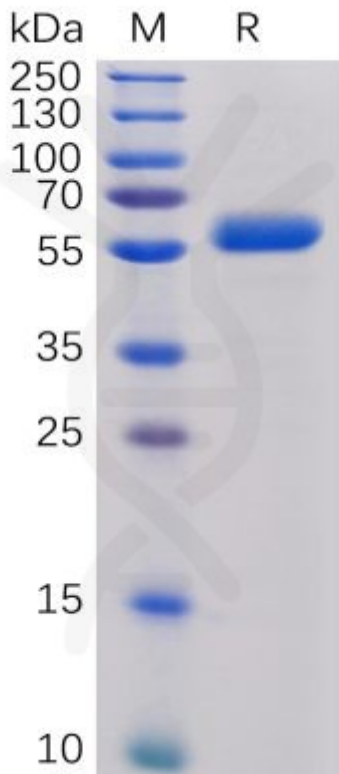


## PRODUCT INFORMATION

<b>Target</b>	CTLA-4
<b>Synonyms</b>	CTLA4;CD152
<b>Description</b>	Recombinant human CTLA-4 protein with C-terminal mouse Fc and 6×His tag
<b>Delivery</b>	In Stock
<b>Uniprot ID</b>	P16410
<b>Expression Host</b>	HEK293
<b>Tag</b>	C-Mouse Fc and 6×His Tag
<b>Molecular Characterization</b>	CTLA-4(Lys36-Asp161) mFc(Pro99-Lys330) 6×His tag
<b>Molecular Weight</b>	The protein has a predicted molecular mass of 54 kDa after removal of the signal peptide.
<b>Purity</b>	The purity of the protein is greater than 95% as determined by SDS-PAGE and Coomassie blue staining.
<b>Formulation &amp; Reconstitution</b>	Lyophilized from sterile PBS, pH 7.4. Normally 5% - 8% trehalose is added as protectants before lyophilization. Please see Certificate of Analysis for specific instructions of reconstitution.
<b>Storage &amp; Shipping</b>	Store at -20°C to -80°C for 12 months in lyophilized form. After reconstitution, if not intended for use within a month, aliquot and store at -80°C (Avoid repeated freezing and thawing). Lyophilized proteins are shipped at ambient temperature.
<b>Background</b>	This gene is a member of the immunoglobulin superfamily and encodes a protein which transmits an inhibitory signal to T cells. The protein contains a V domain, a transmembrane domain, and a cytoplasmic tail. Alternate transcriptional splice variants, encoding different isoforms, have been characterized. The membrane-bound isoform functions as a homodimer interconnected by a disulfide bond, while the soluble isoform functions as a monomer. Mutations in this gene have been associated with insulin-dependent diabetes mellitus, Graves disease, Hashimoto thyroiditis, celiac disease, systemic lupus erythematosus, thyroid-associated orbitopathy, and other autoimmune diseases.
<b>Usage</b>	Research use only
<b>Conjugate</b>	Unconjugated

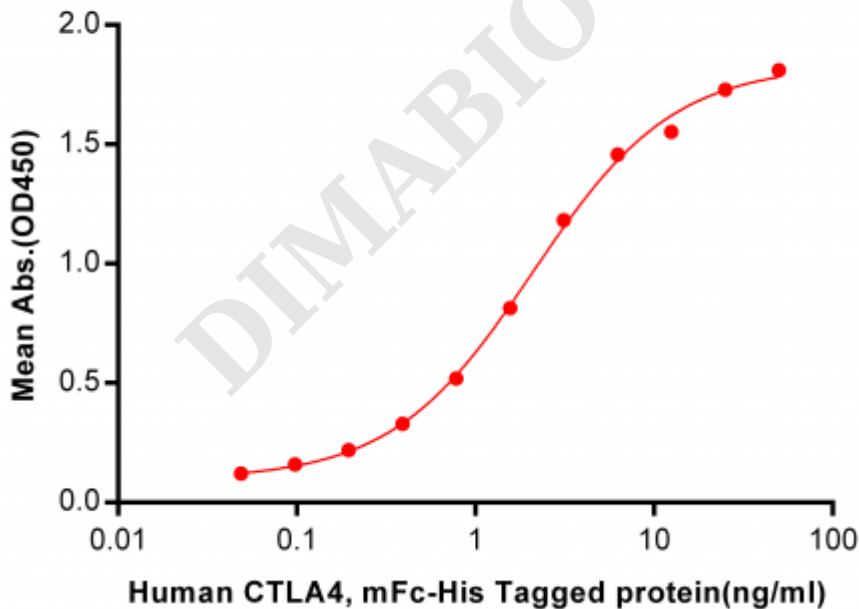




**Figure 1.** Human CTLA-4 Protein, mFc-His Tag on SDS-PAGE under reducing condition.

### Human CTLA4, mFc-His Tagged protein ELISA

0.2  $\mu$ g of Human B7-1, hFc Tagged protein per well

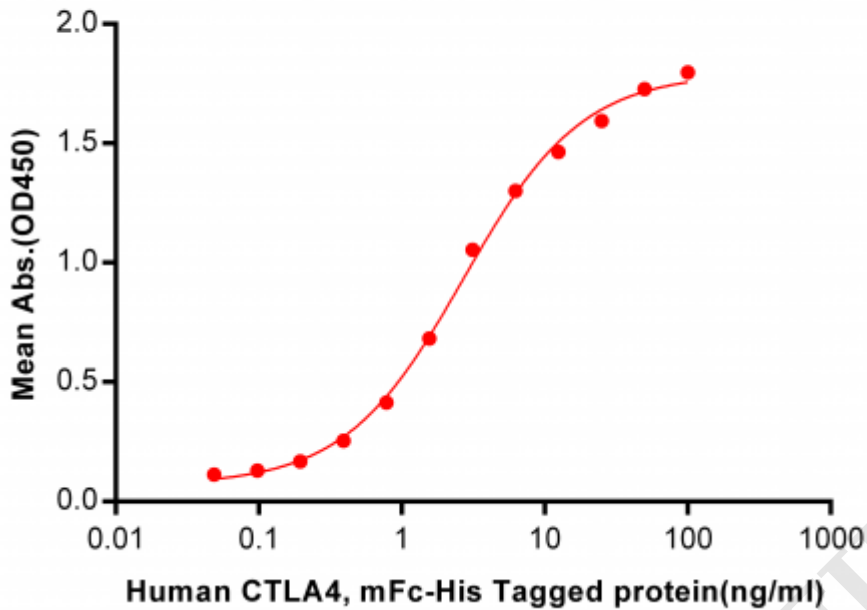


**Figure 2.** ELISA plate pre-coated by 2  $\mu$ g/ml (100  $\mu$ l/well) Human B7-1, hFc tagged protein ([getskuurl sku="PME100473"]) can bind Human CTLA4, mFc-His tagged protein (PME100017) in a linear range of 0.048-2.094 ng/ml.



### Human CTLA4, mFc-His Tagged protein ELISA

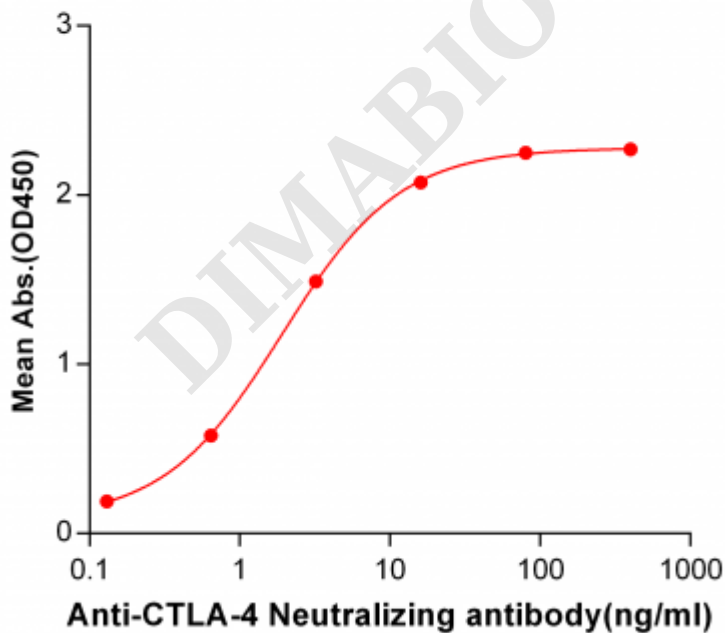
0.2  $\mu$ g of Human B7-2, hFc Tagged protein per well



**Figure 3.** ELISA plate pre-coated by 2  $\mu$ g/ml (100  $\mu$ l/well) Human B7-2, hFc tagged protein ([getskuurl sku="PME100474"]) can bind Human CTLA4, mFc-His tagged protein (PME100017) in a linear range of 0.048-2.694 ng/ml.

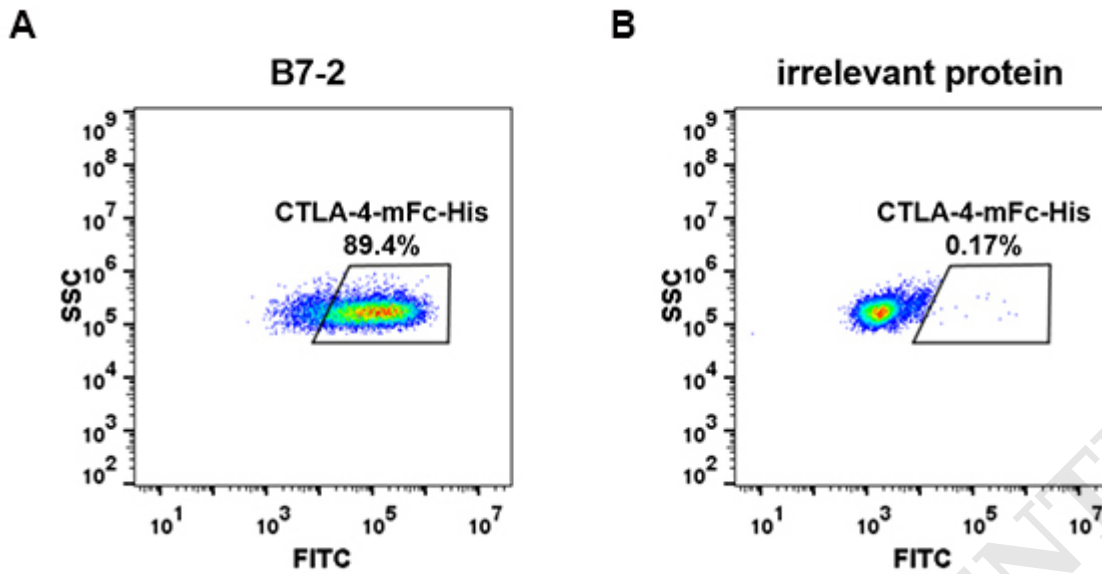
### Human CTLA-4, mFc-His Tagged protein ELISA

0.2  $\mu$ g of CTLA-4, mFc-His Tagged protein per well

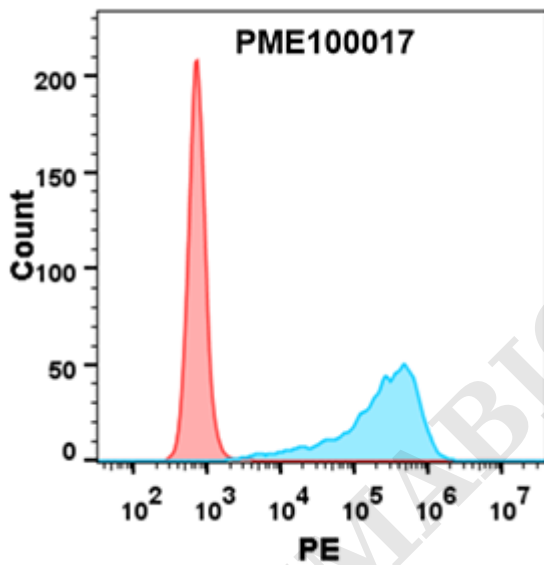


**Figure 4.** ELISA plate pre-coated by 2  $\mu$ g/ml (100  $\mu$ l/well) Human CTLA-4, mFc-His tagged protein (PME100017) can bind Anti-CTLA-4 Neutralizing antibody ([getskuurl sku="BME100022"]) in a linear range of 0.13-16.0 ng/ml.





**Figure 5.** HEK293 cell line transfected with irrelevant protein (**B**) and human B7-2 (**A**) were surface stained with Human CTLA4, mFc-His tagged protein (PME100017)  $1\mu\text{g/ml}$  followed by Alexa 488-conjugated anti-mouse IgG secondary antibody.



**Figure 6.** Flow cytometry analysis with  $1\mu\text{g/ml}$  Human CTLA4 Protein, mFc-His tag (PME100017) on Expi293 cells transfected with human B7-1 (Blue histogram) or Expi293 transfected with irrelevant protein (Red histogram).

