

PRODUCT INFORMATION

Target	EPHA4
Synonyms	EK8;HEK8;SEK;TYRO1
Description	Recombinant human EPHA4 protein with C-terminal 6×His tag
Delivery	In Stock
Uniprot ID	P54764
Expression Host	HEK293
Tag	C-6×His Tag
Molecular Characterization	EPHA4(Val20-Thr547) 6×His tag
Molecular Weight	The protein has a predicted molecular mass of 59.2 kDa after removal of the signal peptide. The apparent molecular mass of EPHA4-His is approximately 55-70 kDa due to glycosylation.
Purity	The purity of the protein is greater than 85% as determined by SDS-PAGE and Coomassie blue staining.
Formulation & Reconstitution	Lyophilized from sterile PBS, pH 7.4. Normally 5% - 8% trehalose is added as protectants before lyophilization. Please see Certificate of Analysis for specific instructions of reconstitution.
Storage & Shipping	Store at -20°C to -80°C for 12 months in lyophilized form. After reconstitution, if not intended for use within a month, aliquot and store at -80°C (Avoid repeated freezing and thawing). Lyophilized proteins are shipped at ambient temperature.
Background	This gene belongs to the ephrin receptor subfamily of the protein-tyrosine kinase family. EPH and EPH-related receptors have been implicated in mediating developmental events, particularly in the nervous system. Receptors in the EPH subfamily typically have a single kinase domain and an extracellular region containing a Cys-rich domain and 2 fibronectin type III repeats. The ephrin receptors are divided into 2 groups based on the similarity of their extracellular domain sequences and their affinities for binding ephrin-A and ephrin-B ligands. Multiple transcript variants encoding different isoforms have been found for this gene. [provided by RefSeq, Jan 2015]
Usage	Research use only



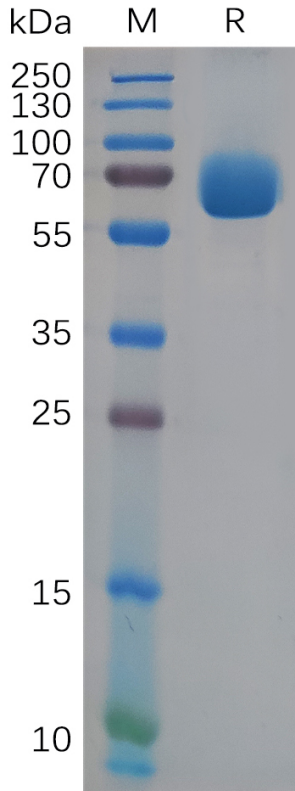


Figure 1. Human EPHA4 Protein, His Tag on SDS-PAGE under reducing condition.

DIMABIO CONFIDENTIAL

