

PRODUCT INFORMATION

Target	FOLR2
Synonyms	BETA-HFR;FBP;FBP/PL-1;FOLR1;FR-BETA;FR-P3;FRbeta
Description	Recombinant human FOLR2 protein with C-terminal 6×His tag
Delivery	In Stock
Uniprot ID	P14207
Expression Host	HEK293
Tag	C-6×His Tag
Molecular Characterization	FOLR2(Thr17-His228) 6×His tag
Molecular Weight	The protein has a predicted molecular mass of 25.4 kDa after removal of the signal peptide. The apparent molecular mass of FOLR2-His is approximately 25-35 kDa due to glycosylation.
Purity	The purity of the protein is greater than 85% as determined by SDS-PAGE and Coomassie blue staining.
Formulation & Reconstitution	Lyophilized from sterile PBS, pH 7.4. Normally 5 % - 8% trehalose is added as protectants before lyophilization. Please see Certificate of Analysis for specific instructions of reconstitution.
Storage & Shipping	Store at -20°C to -80°C for 12 months in lyophilized form. After reconstitution, if not intended for use within a month, aliquot and store at -80°C (Avoid repeated freezing and thawing). Lyophilized proteins are shipped at ambient temperature.
Background	The protein encoded by this gene is a member of the folate receptor (FOLR) family, and these genes exist in a cluster on chromosome 11. Members of this gene family have a high affinity for folic acid and for several reduced folic acid derivatives, and they mediate delivery of 5-methyltetrahydrofolate to the interior of cells. This protein has a 68% and 79% sequence homology with the FOLR1 and FOLR3 proteins, respectively. Although this protein was originally thought to be specific to placenta, it can also exist in other tissues, and it may play a role in the transport of methotrexate in synovial macrophages in rheumatoid arthritis patients. Multiple transcript variants that encode the same protein have been found for this gene. [provided by RefSeq, Jul 2008]
Usage	Research use only
Conjugate	Unconjugated



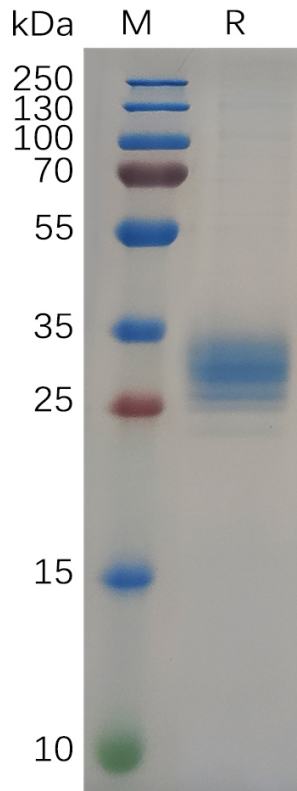


Figure 1. Human FOLR2 Protein, His Tag on SDS-PAGE under reducing condition.

Human FOLR2,His Tagged protein ELISA

0.4 μ g of Human FOLR2, His tagged protein per well

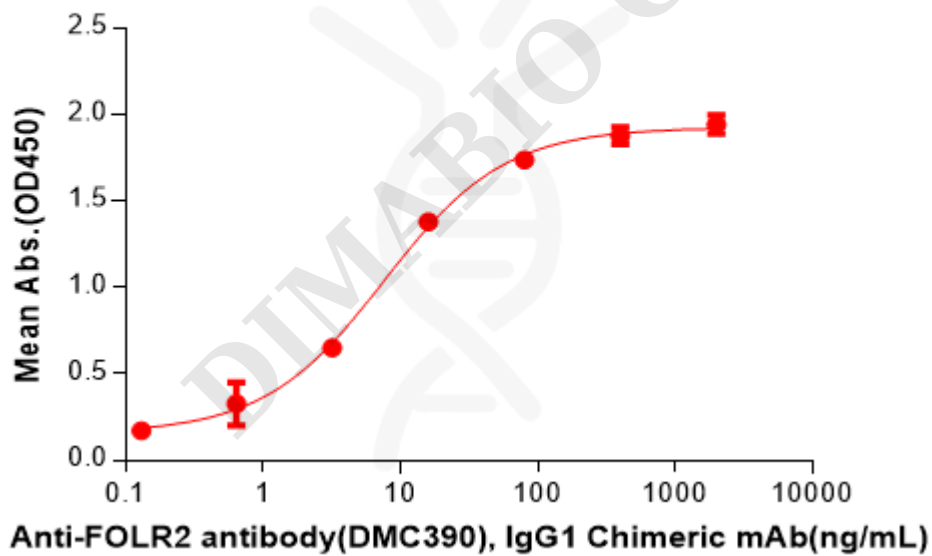


Figure 2. ELISA plate pre-coated by 4 μ g/mL (100 μ L/well) Human FOLR2 Protein, His Tag(PME100655) can bind Anti-FOLR2 antibody(DMC390), IgG1 Chimeric mAb in a linear range of 0.64-16 ng/mL.

