

**PRODUCT INFORMATION**

|   |  |
|---|--|
| <b>Target</b>                           | GFRA3  |
| <b>Synonyms</b>                         | GDNFR3   |
| <b>Description</b>                      | Recombinant human GFRA3 protein with C-terminal 6×His tag  |
| <b>Delivery</b>                         | In Stock   |
| <b>Uniprot ID</b>                       | O60609   |
| <b>Expression Host</b>                  | HEK293   |
| <b>Tag</b>                              | C-6×His Tag  |
| <b>Molecular Characterization</b>       | GFRA3(Asp32-Asn374) 6×His tag  |
| <b>Molecular Weight</b>                 | The protein has a predicted molecular mass of 39.1 kDa after removal of the signal peptide. The apparent molecular mass of GFRA3-His is approximately 55-70 kDa due to glycosylation.  |
| <b>Purity</b>                           | The purity of the protein is greater than 85% as determined by SDS-PAGE and Coomassie blue staining.   |
| <b>Formulation &amp; Reconstitution</b> | Lyophilized from sterile PBS, pH 7.4. Normally 5 % - 8% trehalose is added as protectants before lyophilization. Please see Certificate of Analysis for specific instructions of reconstitution.   |
| <b>Storage &amp; Shipping</b>           | Store at -20°C to -80°C for 12 months in lyophilized form. After reconstitution, if not intended for use within a month, aliquot and store at -80°C (Avoid repeated freezing and thawing). Lyophilized proteins are shipped at ambient temperature.                                  |
| <b>Background</b>                       | The protein encoded by this gene is a glycosylphosphatidylinositol(GPI)-linked cell surface receptor and a member of the GDNF receptor family. It forms a signaling receptor complex with RET tyrosine kinase receptor and binds the ligand, artemin. [provided by RefSeq, Jul 2008] |
| <b>Usage</b>                            | Research use only  |
| <b>Conjugate</b>                        | Unconjugated   |



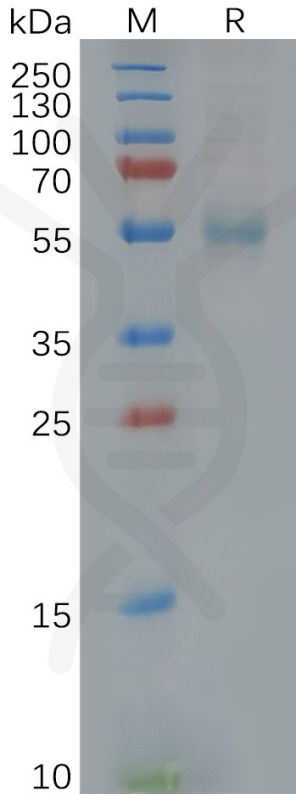


Figure 1. Human GFRA3 Protein, His Tag on SDS-PAGE under reducing condition.

### Human GFRA3, His Tagged protein ELISA

0.2  $\mu$ g of Human GFRA3, His tagged protein per well

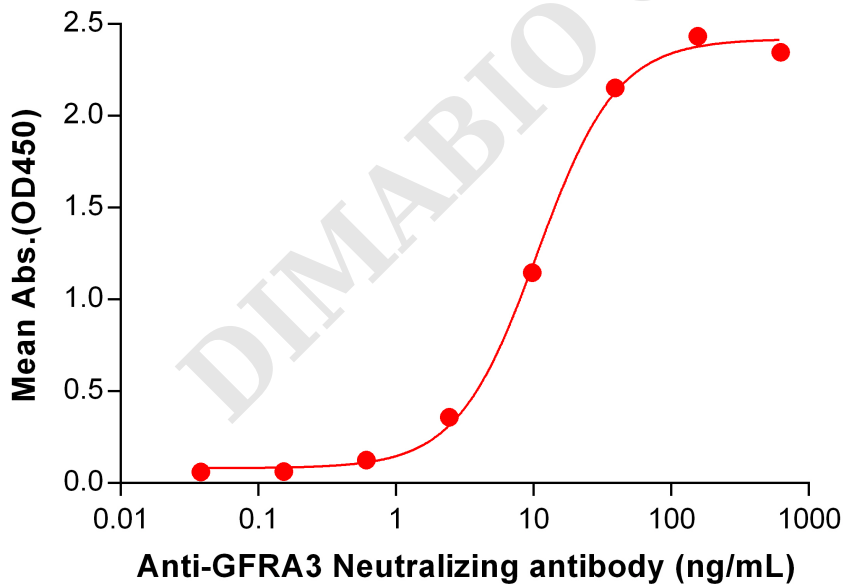


Figure 2. ELISA plate pre-coated by 2  $\mu$ g/mL (100  $\mu$ L/well) Human GFRA3 Protein, His Tag (PME100620) can bind Anti-GFRA3 Neutralizing antibody BME100091 in a linear range of 2.44-156.25 ng/mL.

