

PRODUCT INFORMATION

Target	GPR55
Synonyms	G-protein coupled receptor 55
Description	Recombinant human GPR55(1-21) protein with C-terminal human Fc tag
Delivery	In Stock
Uniprot ID	Q9Y2T6
Expression Host	HEK293
Tag	C-Human Fc Tag
Molecular Characterization	GPR55(Met1-Thr21) hFc(Glu99-Ala330)
Molecular Weight	The protein has a predicted molecular mass of 28.5 kDa after removal of the signal peptide. The apparent molecular mass of GPR55(1-21)-hFc is approximately 35-40 kDa due to glycosylation.
Purity	The purity of the protein is greater than 95% as determined by SDS-PAGE and Coomassie blue staining.
Formulation & Reconstitution	Lyophilized from sterile PBS, pH 7.4. Normally 5% - 8% trehalose is added as protectants before lyophilization. Please see Certificate of Analysis for specific instructions of reconstitution.
Storage & Shipping	Store at -20°C to -80°C for 12 months in lyophilized form. After reconstitution, if not intended for use within a month, aliquot and store at -80°C (Avoid repeated freezing and thawing). Lyophilized proteins are shipped at ambient temperature.
Background	This gene belongs to the G-protein-coupled receptor superfamily. The encoded integral membrane protein is a likely cannabinoid receptor. It may be involved in several physiological and pathological processes by activating a variety of signal transduction pathways. [provided by RefSeq, Aug 2013]
Usage	Research use only
Conjugate	Unconjugated



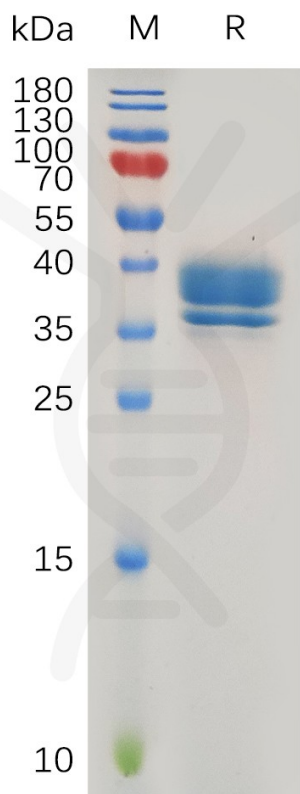


Figure 1. Human GPR55(1-21) Protein, hFc Tag on SDS-PAGE under reducing condition.

DIMABIO CONFIDENTIAL

