

PRODUCT INFORMATION

Target	GPRC5D
Synonyms	GPRC5D
Description	Recombinant human GPRC5D protein with C-terminal human Fc tag
Delivery	In Stock
Uniprot ID	Q9NZD1
Expression Host	HEK293
Tag	C-Human Fc Tag
Molecular Characterization	GPRC5D(Met1-Glu27) hFc(Glu99-Ala330)
Molecular Weight	The protein has a predicted molecular mass of 28.4 kDa after removal of the signal peptide. The apparent molecular mass of GPRC5D-hFc is approximately 25-35 kDa due to glycosylation.
Purity	The purity of the protein is greater than 95% as determined by SDS-PAGE and Coomassie blue staining.
Formulation & Reconstitution	Lyophilized from sterile PBS, pH 7.4. Normally 5% - 8% trehalose is added as protectants before lyophilization. Please see Certificate of Analysis for specific instructions of reconstitution. Store at -20°C to -80°C for 12 months in lyophilized form. After reconstitution, if not intended for use within a month, aliquot and store at -80°C (Avoid repeated freezing and thawing). Lyophilized proteins are shipped at ambient temperature.
Storage & Shipping	
Background	The protein encoded by this gene is a member of the G protein-coupled receptor family, however, the specific function of this gene has not yet been determined.
Usage	Research use only
Conjugate	Unconjugated



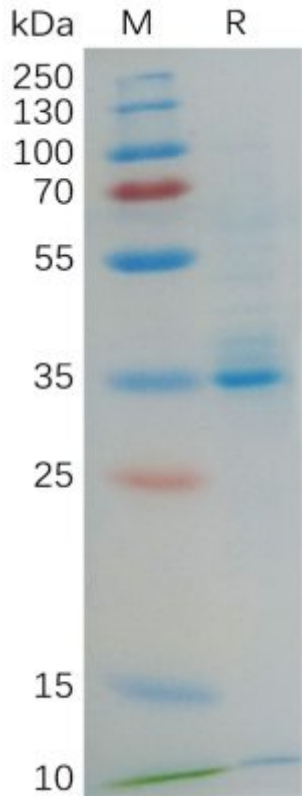


Figure 1. Human GPRC5D Protein, hFc Tag on SDS-PAGE under reducing condition.

Human GPRC5D, hFc Tagged protein ELISA

0.2 μg of Human GPRC5D, hFc tagged protein per well

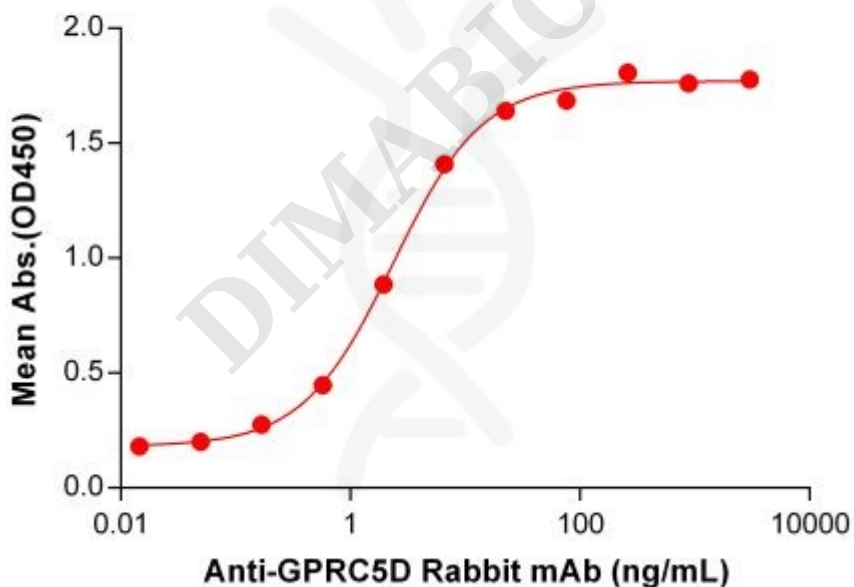


Figure 2. ELISA plate pre-coated by 2 $\mu\text{g}/\text{mL}$ (100 $\mu\text{L}/\text{well}$) Human GPRC5D Protein, hFc Tag (PME100677) can bind Anti-GPRC5D antibody (DM91), Rabbit mAb ([getskuurl sku="DME100091"]) in a linear range of 0.17–22.45 ng/mL.

