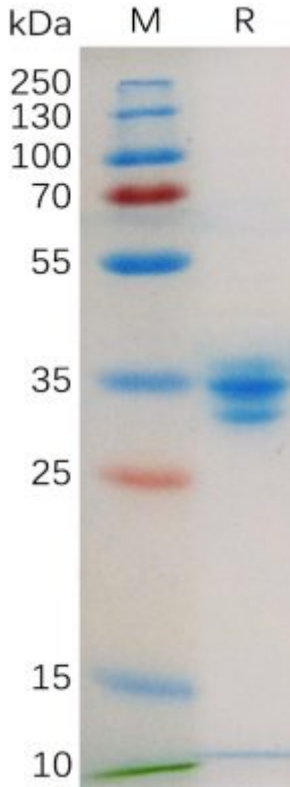


**PRODUCT INFORMATION**

<b>Target</b>	GPRC5D
<b>Synonyms</b>	GPRC5D
<b>Description</b>	Recombinant human GPRC5D protein with C-terminal mouse Fc tag
<b>Delivery</b>	In Stock
<b>Uniprot ID</b>	Q9NZD1
<b>Expression Host</b>	HEK293
<b>Tag</b>	C-Mouse Fc Tag
<b>Molecular Characterization</b>	GPRC5D(Met2-Glu21) mFc(Pro99-Lys330)
<b>Molecular Weight</b>	The protein has a predicted molecular mass of 28.4 kDa after removal of the signal peptide. The apparent molecular mass of GPRC5D-mFc is approximately 25-35 kDa due to glycosylation.
<b>Purity</b>	The purity of the protein is greater than 95% as determined by SDS-PAGE and Coomassie blue staining.
<b>Formulation &amp; Reconstitution</b>	Lyophilized from sterile PBS, pH 7.4. Normally 5% - 8% trehalose is added as protectants before lyophilization. Please see Certificate of Analysis for specific instructions of reconstitution.
<b>Storage &amp; Shipping</b>	Store at -20°C to -80°C for 12 months in lyophilized form. After reconstitution, if not intended for use within a month, aliquot and store at -80°C (Avoid repeated freezing and thawing). Lyophilized proteins are shipped at ambient temperature.
<b>Background</b>	The protein encoded by this gene is a member of the G protein-coupled receptor family, however, the specific function of this gene has not yet been determined.
<b>Usage</b>	Research use only
<b>Conjugate</b>	Unconjugated

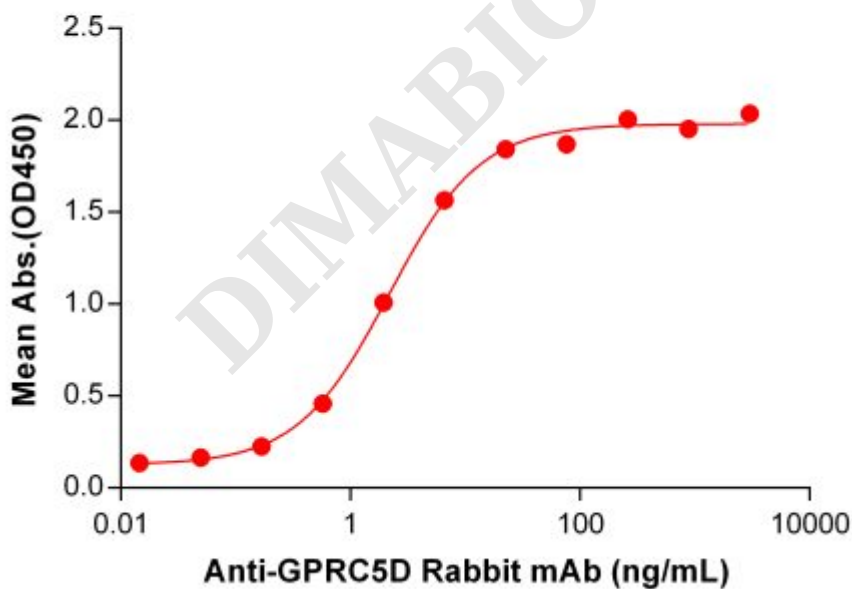




**Figure 1.** Human GPRC5D Protein, mFc Tag on SDS-PAGE under reducing condition.

### Human GPRC5D, mFc Tagged protein ELISA

0.2  $\mu$ g of Human GPRC5D, mFc tagged protein per well



**Figure 2.** ELISA plate pre-coated by 2  $\mu$ g/mL (100  $\mu$ L/well) Human GPRC5D Protein, mFc Tag (PME100559) can bind Anti-GPRC5D antibody (DM91), Rabbit mAb ([getskuurl sku="DME100091"]) in a linear range of 0.17–22.45 ng/mL.



### Human GPRC5D, mFc Tagged protein ELISA

0.2  $\mu$ g of Human GPRC5D, mFc tagged protein per well

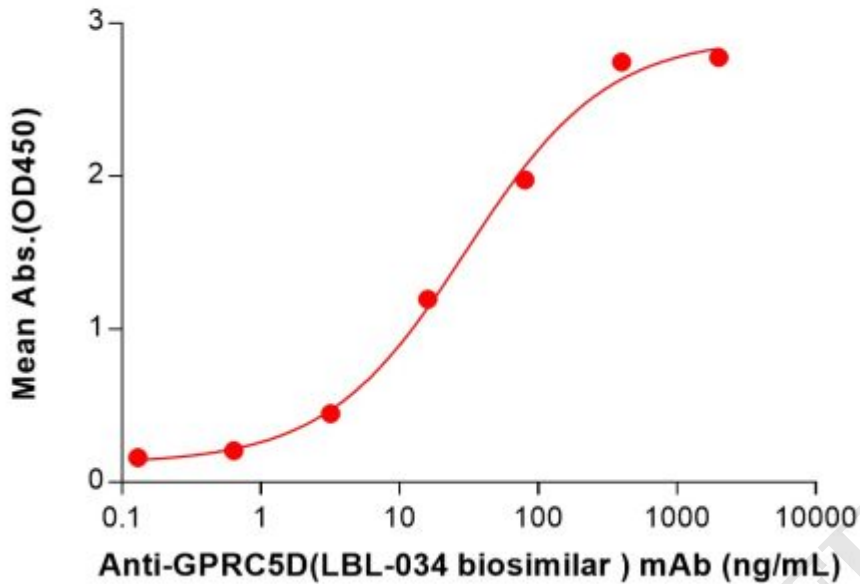


Figure 3. ELISA plate pre-coated by 2  $\mu$ g/mL (100  $\mu$ L/well) Human GPRC5D Protein, mFc Tag (PME100559) can bind Anti-GPRC5D(LBL-034 biosimilar) mAb (BME100193) in a linear range of 3.20–80 ng/mL.

### Human GPRC5D, mFc Tagged protein ELISA

0.2  $\mu$ g of Human GPRC5D, mFc tagged protein per well

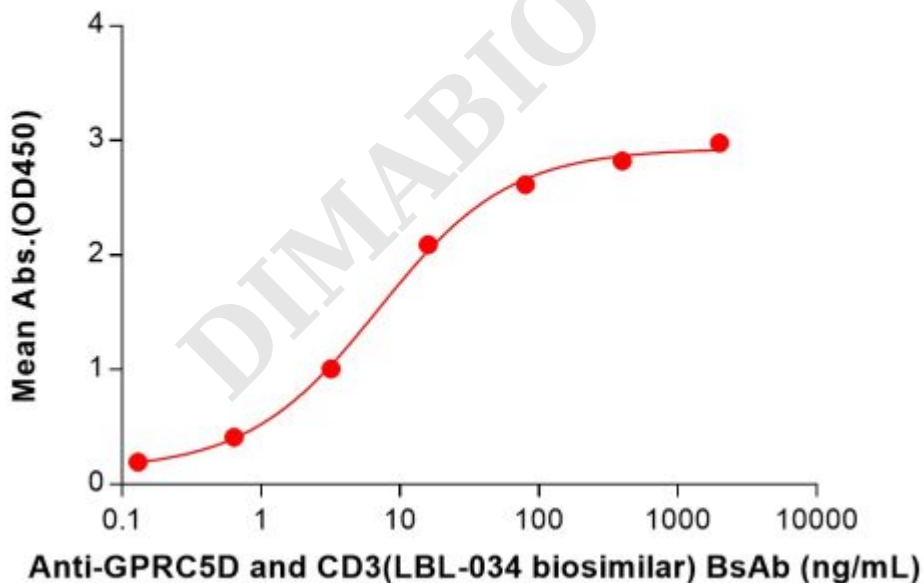


Figure 4. ELISA plate pre-coated by 2  $\mu$ g/mL (100  $\mu$ L/well) Human GPRC5D Protein, mFc Tag (PME100559) can bind Anti-GPRC5D and CD3(LBL-034 biosimilar) BsAb (BME100196) in a linear range of 3.20–80 ng/mL.

