

PRODUCT INFORMATION

Target	GUCY2C
Synonyms	DIAR6;GC-C;GUC2C;MECIL;MUCIL;STAR
Description	Recombinant human GUCY2C protein with C-terminal 6×His tag
Delivery	In Stock
Uniprot ID	P25092
Expression Host	HEK293
Tag	C-6×His Tag
Molecular Characterization	GUCY2C(Ser24-Gln430) 6×His tag
Molecular Weight	The protein has a predicted molecular mass of 46.8 kDa after removal of the signal peptide. The apparent molecular mass of GUCY2C-His is approximately 55-130 kDa due to glycosylation.
Purity	The purity of the protein is greater than 95% as determined by SDS-PAGE and Coomassie blue staining.
Formulation & Reconstitution	Lyophilized from sterile PBS, pH 7.4. Normally 5% - 8% trehalose is added as protectants before lyophilization. Please see Certificate of Analysis for specific instructions of reconstitution.
Storage & Shipping	Store at -20°C to -80°C for 12 months in lyophilized form. After reconstitution, if not intended for use within a month, aliquot and store at -80°C (Avoid repeated freezing and thawing). Lyophilized proteins are shipped at ambient temperature.
Background	This gene encodes a transmembrane protein that functions as a receptor for endogenous peptides guanylin and uroguanylin, and the heat-stable E. coli enterotoxin. The encoded protein activates the cystic fibrosis transmembrane conductance regulator. Mutations in this gene are associated with familial diarrhea (autosomal dominant) and meconium ileus (autosomal recessive). [provided by RefSeq, Nov 2016]
Usage	Research use only
Conjugate	Unconjugated



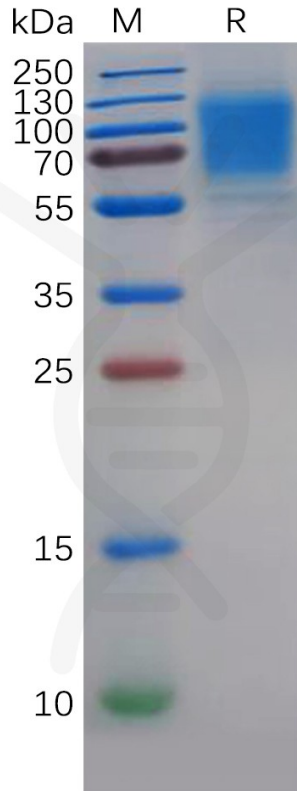


Figure 1. Human GUCY2C Protein, His Tag on SDS-PAGE under reducing condition.

Human GUCY2C, His tagged protein ELISA

0.1 μg of Human GUCY2C, His tagged protein per well

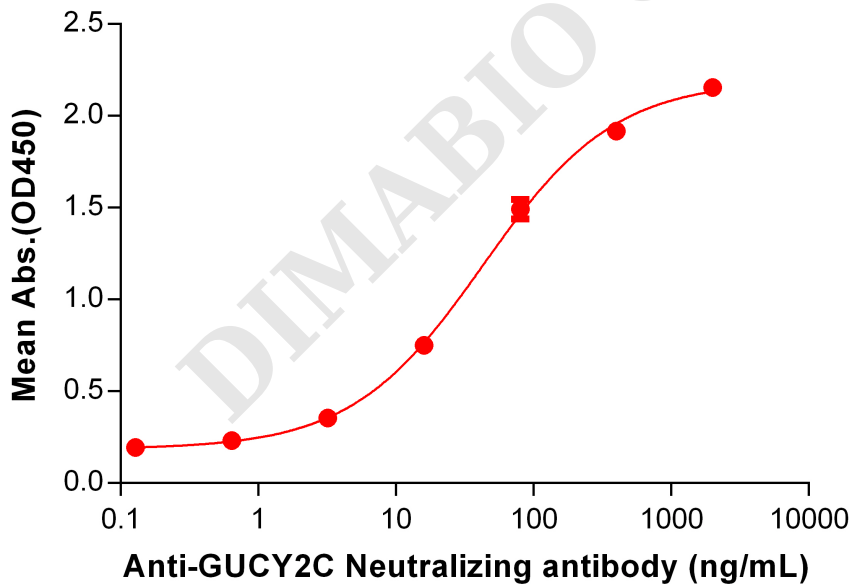


Figure 2. ELISA plate pre-coated by 1 $\mu\text{g}/\text{mL}$ (100 $\mu\text{L}/\text{well}$) Human GUCY2C protein, His Tag (PME100262) can bind Anti-GUCY2C Neutralizing antibody ([getskuurl sku="BME100067"]) in a linear range of 3.2-400 ng/mL.



Human GUCY2C, His Tagged protein ELISA

0.2 μ g of Human GUCY2C, His tagged protein per well

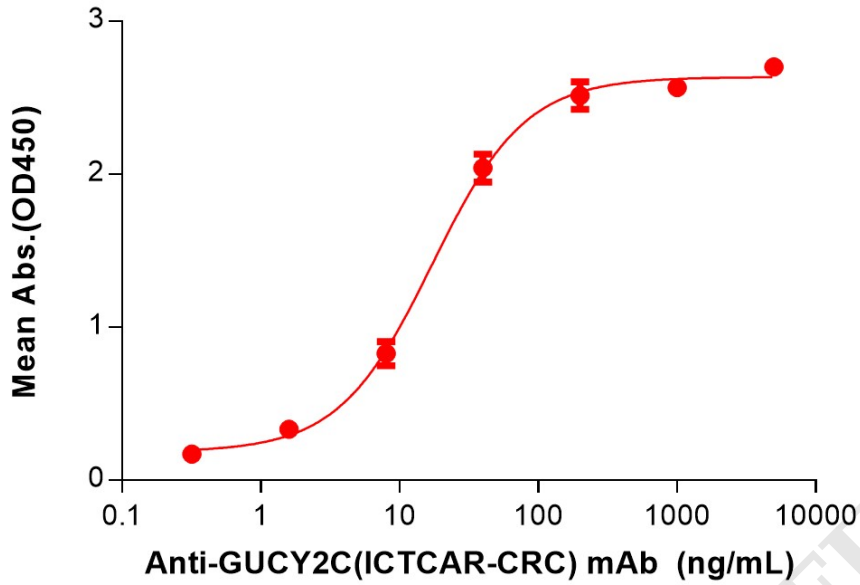


Figure 3. ELISA plate pre-coated by 2 μ g/mL (100 μ L/well) Human GUCY2C Protein, His Tag (PME100262) can bind Anti-GUCY2C(ICTCAR-CRC) mAb (BME100180) in a linear range of 1.60–40 ng/mL.

