

PRODUCT INFORMATION

Target	HE4
Synonyms	WFDC2; WAP5; EDDM4; dj461P17.6
Description	Recombinant human HE4 Protein with C-terminal human Fc tag
Delivery	In Stock
Uniprot ID	Q14508
Expression Host	HEK293
Tag	C-Human Fc tag
Molecular Characterization	HE4(Glu31-Phe124) hFc(Glu99-Ala330)
Molecular Weight	The protein has a predicted molecular mass of 36.2 kDa after removal of the signal peptide. The apparent molecular mass of HE4-hFc is approximately 35-55 kDa due to glycosylation.
Purity	The purity of the protein is greater than 95% as determined by SDS-PAGE and Coomassie blue staining.
Formulation & Reconstitution	Lyophilized from sterile PBS, pH 7.4. Normally 5% - 8% trehalose is added as protectants before lyophilization. Please see Certificate of Analysis for specific instructions of reconstitution.
Storage & Shipping	Store at -20°C to -80°C for 12 months in lyophilized form. After reconstitution, if not intended for use within a month, aliquot and store at -80°C (Avoid repeated freezing and thawing). Lyophilized proteins are shipped at ambient temperature.
Background	This gene encodes a protein that is a member of the WFDC domain family. The WFDC domain, or WAP Signature motif, contains eight cysteines forming four disulfide bonds at the core of the protein, and functions as a protease inhibitor in many family members. This gene is expressed in pulmonary epithelial cells, and was also found to be expressed in some ovarian cancers. The encoded protein is a small secretory protein, which may be involved in sperm maturation. [provided by RefSeq, Jul 2008]
Usage	Research use only
Conjugate	Unconjugated



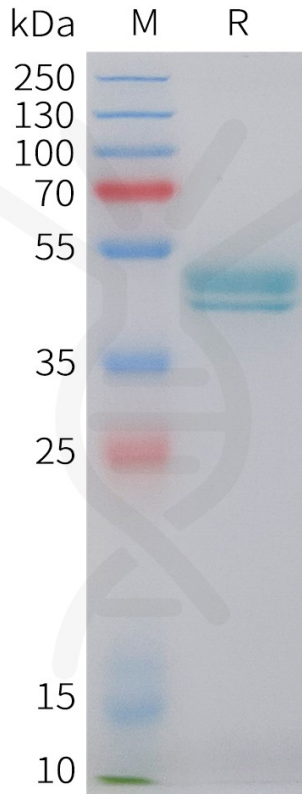


Figure 1. Human HE4 Protein, hFc Tag on SDS-PAGE under reducing condition.

DIMABIO CONFIDENTIAL

