

PRODUCT INFORMATION

Target	HVEM
Synonyms	ATAR;CD270;HVEA;HVEM;LIGHTR;TR2
Description	Recombinant Human HVEM Protein with C-terminal 6×His tag
Delivery	In Stock
Uniprot ID	Q92956
Expression Host	HEK293
Tag	C-6×His Tag
Molecular Characterization	HVEM(Leu39-Val202) 6×His tag
Molecular Weight	The protein has a predicted molecular mass of 18.2 kDa after removal of the signal peptide. The apparent molecular mass of HVEM-His is approximately 25-55 kDa due to glycosylation.
Purity	The purity of the protein is greater than 95% as determined by SDS-PAGE and Coomassie blue staining.
Formulation & Reconstitution	Lyophilized from sterile PBS, pH 7.4. Normally 5% - 8% trehalose is added as protectants before lyophilization. Please see Certificate of Analysis for specific instructions of reconstitution.
Storage & Shipping	Store at -20°C to -80°C for 12 months in lyophilized form. After reconstitution, if not intended for use within a month, aliquot and store at -80°C (Avoid repeated freezing and thawing). Lyophilized proteins are shipped at ambient temperature.
Background	This gene encodes a member of the TNF (tumor necrosis factor) receptor superfamily. The encoded protein functions in signal transduction pathways that activate inflammatory and inhibitory T-cell immune response. It binds herpes simplex virus (HSV) viral envelope glycoprotein D (gD), mediating its entry into cells. Alternative splicing results in multiple transcript variants.
Usage	Research use only
Conjugate	Unconjugated



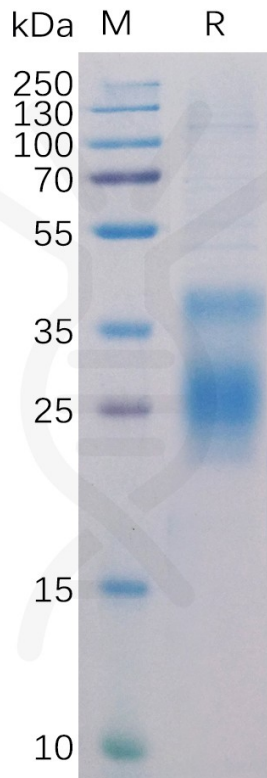


Figure 1. Human HVEM Protein, His Tag on SDS-PAGE under reducing condition.

Human HVEM, His Tagged protein ELISA

0.2 μ g of HVEM, His Tagged protein per well

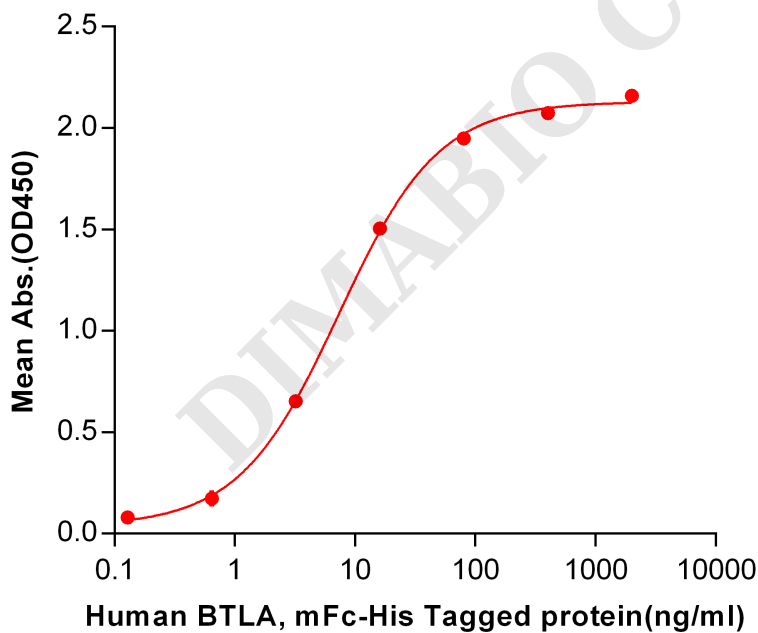


Figure 2. ELISA plate pre-coated by 2 μ g/ml (100 μ l/well) Human HVEM, His tagged protein (PME100273) can bind Human BTLA,mFc-His tagged protein PME100048 in a linear range of 0.64-80 ng/ml.



Human HVEM, His Tagged protein ELISA

0.2 μ g of HVEM, His Tagged protein per well

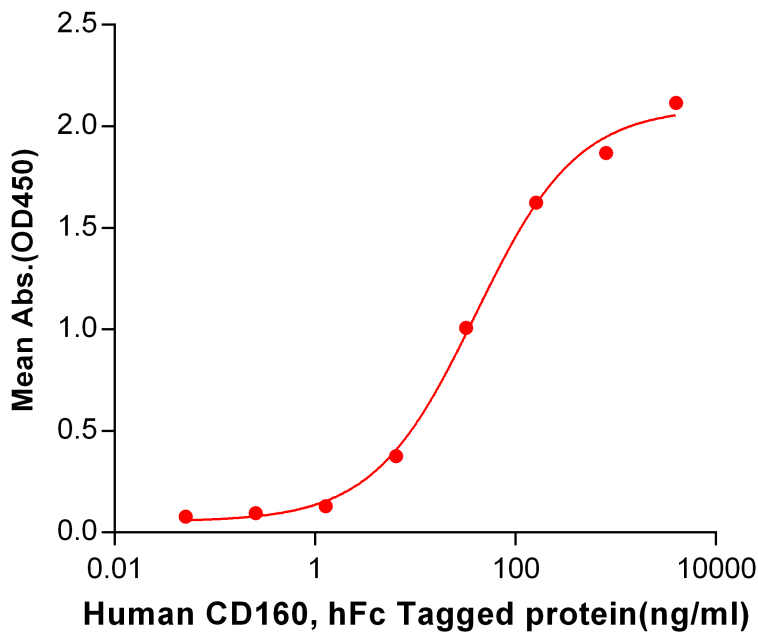


Figure 3. ELISA plate pre-coated by 2 μ g/ml (100 μ l/well) Human HVEM, His tagged protein (PME100273) can bind Human CD160,hFc tagged protein PME100055 in a linear range of 1.28-160 ng/ml.

Human HVEM, His Tagged protein ELISA

0.2 μ g of Human HVEM, His Tagged protein per well

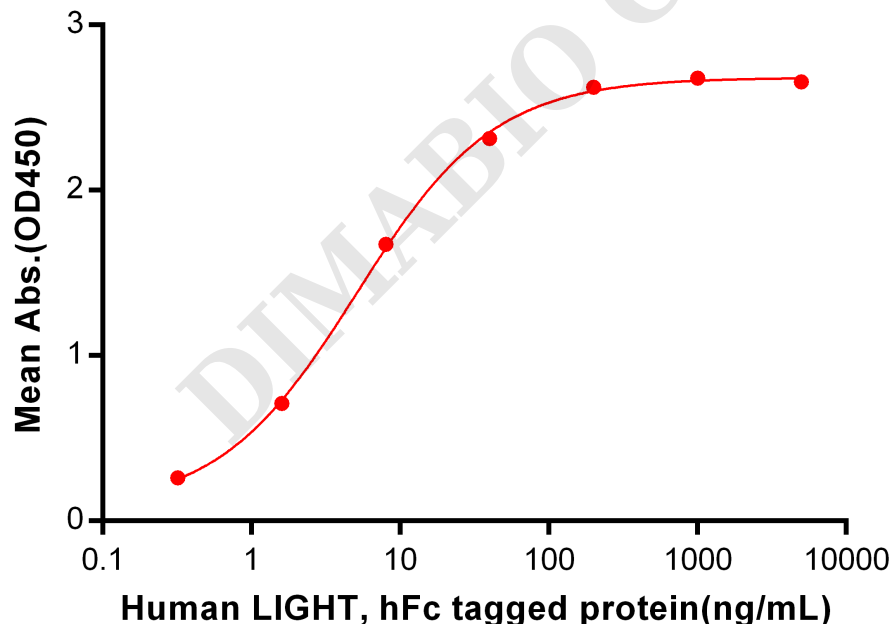


Figure 4. ELISA plate pre-coated by 2 μ g/ml (100 μ l/well) Human HVEM, His tagged protein (PME100273) can bind Human LIGHT, hFc tagged protein PME100049 in a linear range of 0.32-40 ng/ml.



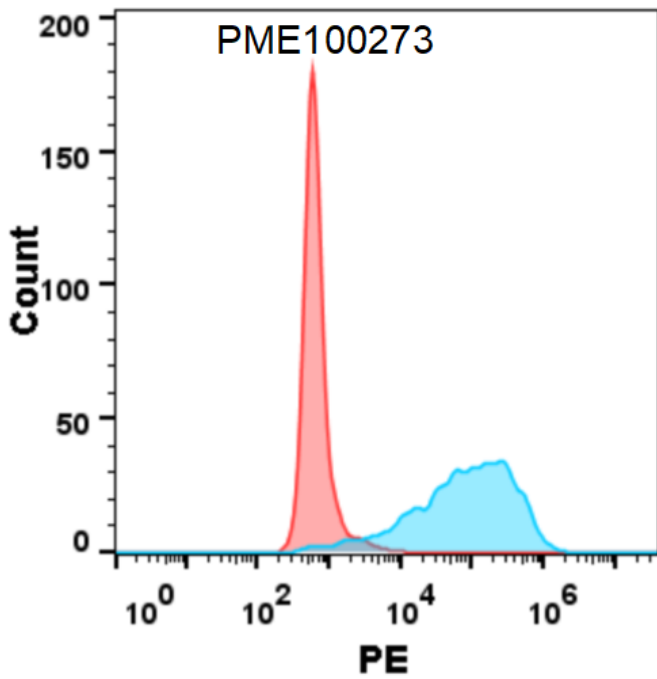


Figure 5. Flow cytometry analysis with 15 $\mu\text{g}/\text{mL}$ Human HVEM Protein, His tag (PME100273) on Expi293 cells transfected with human BTLA (Blue histogram) or Expi293 transfected with irrelevant protein (Red histogram).

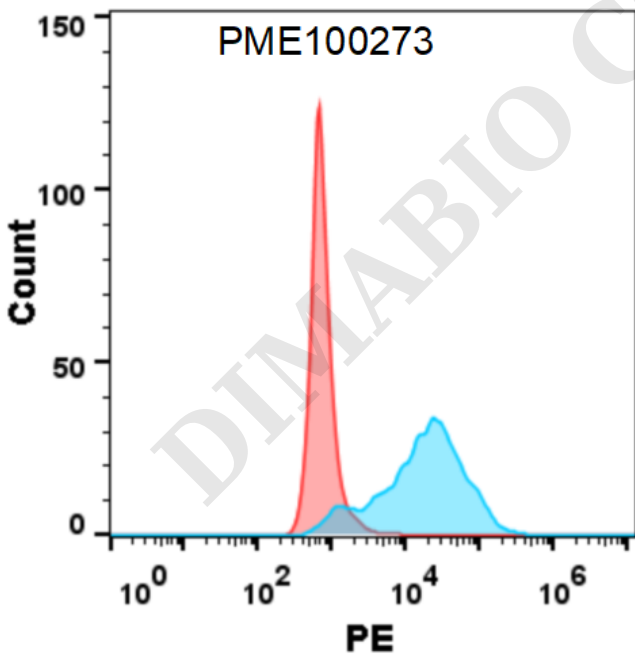


Figure 6. Flow cytometry analysis with 15 $\mu\text{g}/\text{mL}$ Human HVEM Protein, His tag (PME100273) on Expi293 cells transfected with human LIGHT (Blue histogram) or Expi293 transfected with irrelevant protein (Red histogram).

