

PRODUCT INFORMATION

| | |
|---|--|
| Target | IGF-1R |
| Synonyms | CD221;IGFIR;IGFR;JTK13 |
| Description | Recombinant human IGF-1R protein with C-terminal 6×His tag |
| Delivery | In Stock |
| Uniprot ID | P08069 |
| Expression Host | HEK293 |
| Tag | C-6×His Tag |
| Molecular Characterization | IGF-1R(Glu31-Asn932) 6×His tag |
| Molecular Weight | The protein has a predicted molecular mass of 103.7 kDa after removal of the signal peptide. The apparent molecular mass of IGF-1R-His is approximately 130-150 kDa due to glycosylation. |
| Purity | The purity of the protein is greater than 85% as determined by SDS-PAGE and Coomassie blue staining. |
| Formulation & Reconstitution | Lyophilized from sterile PBS, pH 7.4. Normally 5 % - 8% trehalose is added as protectants before lyophilization. Please see Certificate of Analysis for specific instructions of reconstitution. |
| Storage & Shipping | Store at -20°C to -80°C for 12 months in lyophilized form. After reconstitution, if not intended for use within a month, aliquot and store at -80°C (Avoid repeated freezing and thawing). Lyophilized proteins are shipped at ambient temperature. |
| Background | This receptor binds insulin-like growth factor with a high affinity. It has tyrosine kinase activity. The insulin-like growth factor I receptor plays a critical role in transformation events. Cleavage of the precursor generates alpha and beta subunits. It is highly overexpressed in most malignant tissues where it functions as an anti-apoptotic agent by enhancing cell survival. Alternatively spliced transcript variants encoding distinct isoforms have been found for this gene. [provided by RefSeq, May 2014] |
| Usage | Research use only |
| Conjugate | Unconjugated |



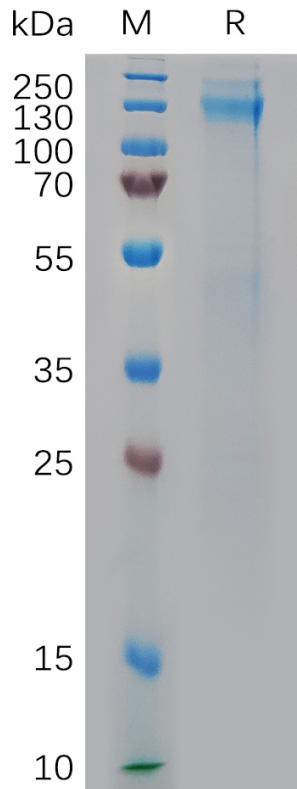


Figure 1. Human IGF-1R Protein, His Tag on SDS-PAGE under reducing condition.

DIMABIO CONFIDENTIAL

