

**PRODUCT INFORMATION**

<b>Target</b>	IGF-I
<b>Synonyms</b>	Insulin-Like Growth Factor I;IGF-I;Mechano Growth Factor;MGF;Somatomedin-C;IGF1;IBP1
<b>Description</b>	Recombinant Human Insulin-like Growth Factor I(4-70) is produced by our E.coli expression system and the target gene encoding Thr52-Ala118 is expressed.
<b>Delivery</b>	In Stock
<b>Uniprot ID</b>	P05019
<b>Expression Host</b>	E.coli
<b>Tag</b>	
<b>Molecular Characterization</b>	Not available
<b>Molecular Weight</b>	7.3 KDa
<b>Purity</b>	Greater than 95% as determined by reducing SDS-PAGE.
<b>Formulation &amp; Reconstitution</b>	Lyophilized from a 0.2 $\mu$ m filtered solution of 20mM NaAc-HAc, pH 4.5.
<b>Storage &amp; Shipping</b>	Store at -20°C to -80°C for 12 months in lyophilized form. After reconstitution, if not intended for use within a month, aliquot and store at -80°C (Avoid repeated freezing and thawing). Lyophilized proteins are shipped at ambient temperature.
<b>Background</b>	Insulin-like growth factor I (IGF1) belongs to the family of insulin-like growth factors that are structurally homologous to proinsulin. Mature IGFs are generated by proteolytic processing of inactive precursor protein containing N-terminal and C-terminal propeptide regions. Mature human IGF-I consisting of 70 amino acids with 94% identity with mouse IGF1 and exhibits cross-species activity. IGF1 binds IGF-1R, IGF-2R, and the insulin receptor and plays a key role in cell cycle progression, cell proliferation and tumor progression. IGF1 expression is regulated by growth hormone.
<b>Usage</b>	Research use only
<b>Conjugate</b>	Unconjugated



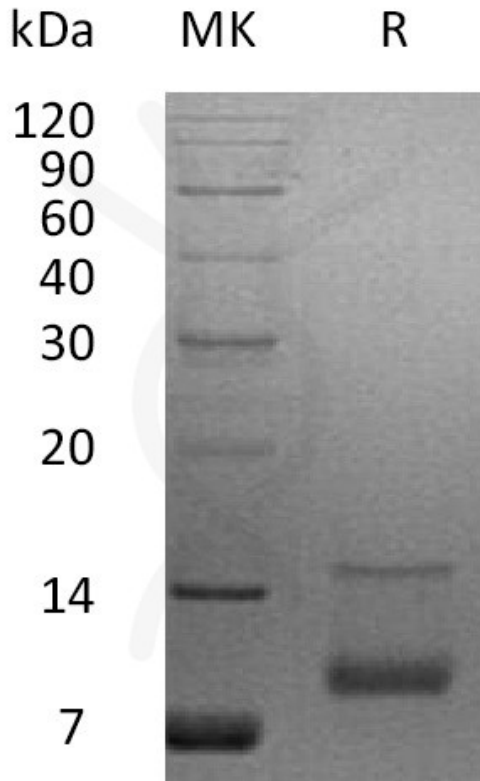


Figure 1. Greater than 95% as determined by reducing SDS-PAGE.

DIMABIO CONFIDENTIAL

