

PRODUCT INFORMATION

Target	IL1RL2
Synonyms	IL-1Rrp2;IL-36R;IL1R-rp2;IL1RRP2
Description	Recombinant Human IL1RL2 Protein with C-terminal 6×His tag
Delivery	In Stock
Uniprot ID	Q9HB29
Expression Host	HEK293
Tag	C-6×His Tag
Molecular Characterization	IL1RL2(Asp20-Arg335) 6×His tag
Molecular Weight	The protein has a predicted molecular mass of 36.8 kDa after removal of the signal peptide.
Purity	The purity of the protein is greater than 85% as determined by SDS-PAGE and Coomassie blue staining.
Formulation & Reconstitution	Lyophilized from sterile PBS, pH 7.4. Normally 5 % - 8% trehalose is added as protectants before lyophilization. Please see Certificate of Analysis for specific instructions of reconstitution.
Storage & Shipping	Store at -20°C to -80°C for 12 months in lyophilized form. After reconstitution, if not intended for use within a month, aliquot and store at -80°C (Avoid repeated freezing and thawing). Lyophilized proteins are shipped at ambient temperature.
Background	The protein encoded by this gene is a member of the interleukin 1 receptor family. An experiment with transient gene expression demonstrated that this receptor was incapable of binding to interleukin 1 alpha and interleukin 1 beta with high affinity. This gene and four other interleukin 1 receptor family genes, including interleukin 1 receptor, type I (IL1R1), interleukin 1 receptor, type II (IL1R2), interleukin 1 receptor-like 1 (IL1RL1), and interleukin 18 receptor 1 (IL18R1), form a cytokine receptor gene cluster in a region mapped to chromosome 2q12. [provided by RefSeq, Jul 2008]
Usage	Research use only



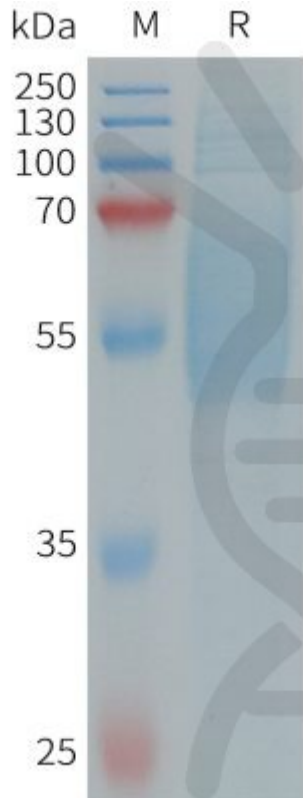


Figure 1. Human IL1RL2 Protein, His Tag on SDS-PAGE under reducing condition.

DIMABIO CONFIDENTIAL

