

PRODUCT INFORMATION

Target	IL2
Synonyms	IL-2;lymphokine;TCGF
Description	Recombinant Human IL2 with C-terminal 6×His tag
Delivery	In Stock
Uniprot ID	P60568
Expression Host	HEK293
Tag	C-6×His Tag
Molecular Characterization	IL2(Ala21-Thr153) 6×His tag
Molecular Weight	The protein has a predicted molecular mass of 16.2 kDa after removal of the signal peptide. The apparent molecular mass of IL2-His is approximately 15-25 kDa due to glycosylation.
Purity	The purity of the protein is greater than 95% as determined by SDS-PAGE and Coomassie blue staining.
Formulation & Reconstitution	Lyophilized from sterile PBS, pH 7.4. Normally 5 % - 8% trehalose is added as protectants before lyophilization. Please see Certificate of Analysis for specific instructions of reconstitution.
Storage & Shipping	Store at -20°C to -80°C for 12 months in lyophilized form. After reconstitution, if not intended for use within a month, aliquot and store at -80°C (Avoid repeated freezing and thawing). Lyophilized proteins are shipped at ambient temperature.
Background	This gene is a member of the interleukin 2 (IL2) cytokine subfamily which includes IL4, IL7, IL9, IL15, IL21, erythropoietin, and thrombopoietin. The protein encoded by this gene is a secreted cytokine produced by activated CD4 and CD8 T lymphocytes, that is important for the proliferation of T and B lymphocytes. The receptor of this cytokine (IL2R) is a heterotrimeric protein complex whose gamma chain is also shared by IL4 and IL7. The expression of this gene in mature thymocytes is monoallelic, which represents an unusual regulatory mode for controlling the precise expression of a single gene. The targeted disruption of a similar gene in mice leads to ulcerative colitis-like disease, which suggests an essential role of this gene in the immune response to antigenic stimuli. [provided by RefSeq, Sep 2020]
Usage	Research use only
Conjugate	Unconjugated



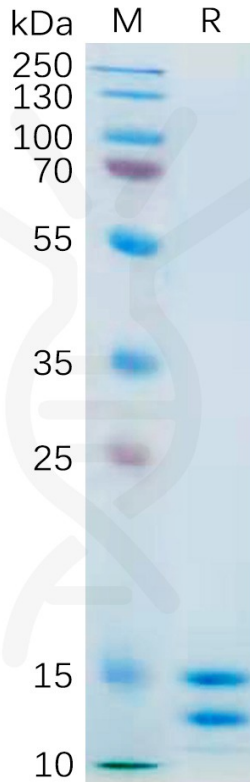


Figure 1. Human IL2 Protein, His Tag on SDS-PAGE under reducing condition.

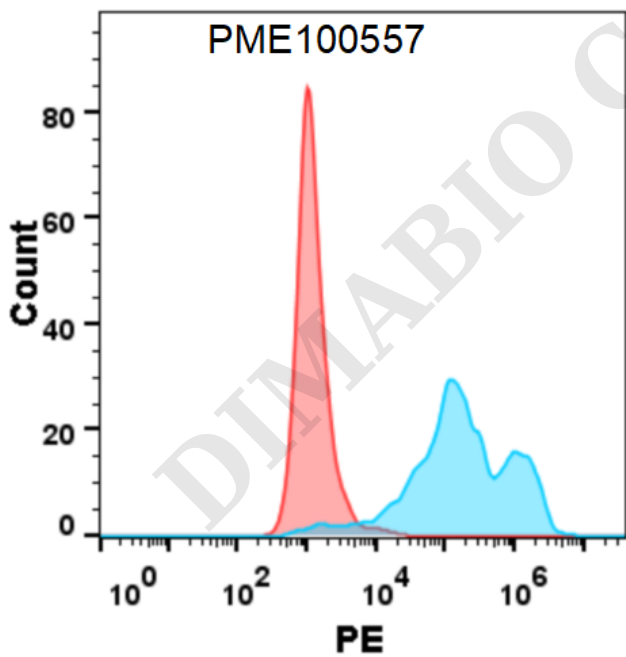


Figure 2. Flow cytometry analysis with 1 $\mu\text{g}/\text{mL}$ Human IL2 Protein, His tag (PME100557) on Expi293 cells transfected with human IL2RB (Blue histogram) or Expi293 transfected with irrelevant protein (Red histogram).

