

**PRODUCT INFORMATION**

<b>Target</b>	IL21R
<b>Synonyms</b>	CD360;IMD56;NILR
<b>Description</b>	Recombinant Human IL21R with C-terminal 6×His tag
<b>Delivery</b>	In Stock
<b>Uniprot ID</b>	Q9HBE5
<b>Expression Host</b>	HEK293
<b>Tag</b>	C-6×His Tag
<b>Molecular Characterization</b>	IL21R(Cys20-Glu232) 6×His tag
<b>Molecular Weight</b>	The protein has a predicted molecular mass of 25.4 kDa after removal of the signal peptide. The apparent molecular mass of IL21R-His is approximately 35-55 kDa due to glycosylation.
<b>Purity</b>	The purity of the protein is greater than 95% as determined by SDS-PAGE and Coomassie blue staining.
<b>Formulation &amp; Reconstitution</b>	Lyophilized from sterile PBS, pH 7.4. Normally 5% - 8% trehalose is added as protectants before lyophilization. Please see Certificate of Analysis for specific instructions of reconstitution.
<b>Storage &amp; Shipping</b>	Store at -20°C to -80°C for 12 months in lyophilized form. After reconstitution, if not intended for use within a month, aliquot and store at -80°C (Avoid repeated freezing and thawing). Lyophilized proteins are shipped at ambient temperature.
<b>Background</b>	The protein encoded by this gene is a cytokine receptor for interleukin 21 (IL21). It belongs to the type I cytokine receptors, and has been shown to form a heterodimeric receptor complex with the common gamma-chain, a receptor subunit also shared by the receptors for interleukin 2, 4, 7, 9, and 15. This receptor transduces the growth promoting signal of IL21, and is important for the proliferation and differentiation of T cells, B cells, and natural killer (NK) cells. The ligand binding of this receptor leads to the activation of multiple downstream signaling molecules, including JAK1, JAK3, STAT1, and STAT3. Knockout studies of a similar gene in mouse suggest a role for this gene in regulating immunoglobulin production. Three alternatively spliced transcript variants have been described.
<b>Usage</b>	Research use only



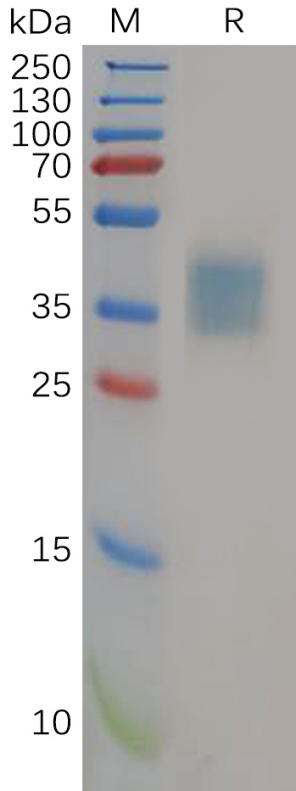


Figure 1. Human IL21R Protein, His Tag on SDS-PAGE under reducing condition.

### Human IL21R, His tagged protein ELISA

0.2  $\mu$ g of Human IL21R, His tagged protein per well

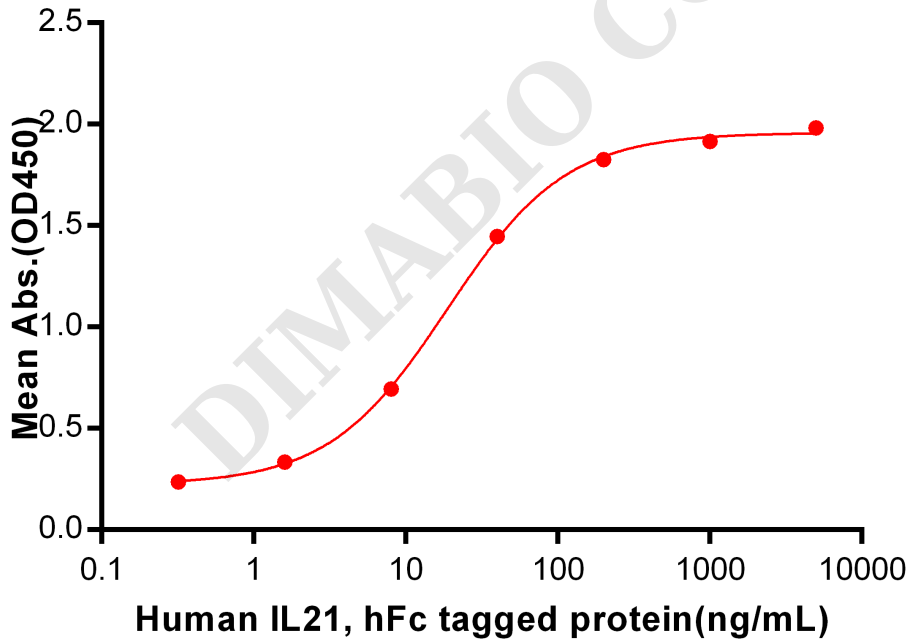


Figure 2. ELISA plate pre-coated by 2  $\mu$ g/ml (100  $\mu$ l/well) Human IL21R, His tagged protein (PME100587) can bind Human IL21, hFc Tagged protein PME101088 in a linear range of 1.6-40 ng/ml.

