

PRODUCT INFORMATION

Target	IL2RA
Synonyms	IL2RA;CD25;p55;IL2-RA;IL-2-RA
Description	Recombinant human IL2RA Protein with C-terminal 6×His tag
Delivery	In Stock
Uniprot ID	P01589
Expression Host	HEK293
Tag	C-6×His Tag
Molecular Characterization	IL2RA(Glu22-Cys213) 6×His tag
Molecular Weight	The protein has a predicted molecular mass of 22.6 kDa after removal of the signal peptide. The apparent molecular mass of IL2RA-His is approximately 35-55 kDa due to glycosylation.
Purity	The purity of the protein is greater than 95% as determined by SDS-PAGE and Coomassie blue staining.
Formulation & Reconstitution	Lyophilized from sterile PBS, pH 7.4. Normally 5% - 8% trehalose is added as protectants before lyophilization. Please see Certificate of Analysis for specific instructions of reconstitution.
Storage & Shipping	Store at -20°C to -80°C for 12 months in lyophilized form. After reconstitution, if not intended for use within a month, aliquot and store at -80°C (Avoid repeated freezing and thawing). Lyophilized proteins are shipped at ambient temperature.
Background	The interleukin 2 (IL2) receptor alpha (IL2RA) and beta (IL2RB) chains, together with the common gamma chain (IL2RG), constitute the high-affinity IL2 receptor. Homodimeric alpha chains (IL2RA) result in low-affinity receptor, while homodimeric beta (IL2RB) chains produce a medium-affinity receptor. Normally an integral-membrane protein, soluble IL2RA has been isolated and determined to result from extracellular proteolysis. Alternately-spliced IL2RA mRNAs have been isolated, but the significance of each is presently unknown. Mutations in this gene are associated with interleukin 2 receptor alpha deficiency.
Usage	Research use only
Conjugate	Unconjugated



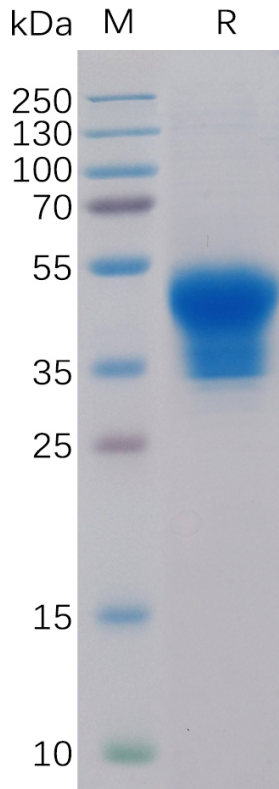


Figure 1. Human IL2RA Protein, His Tag on SDS-PAGE under reducing condition.

Human IL2RA, His Tagged protein ELISA

0.2 µg of Human IL2RA, His Tagged protein per well

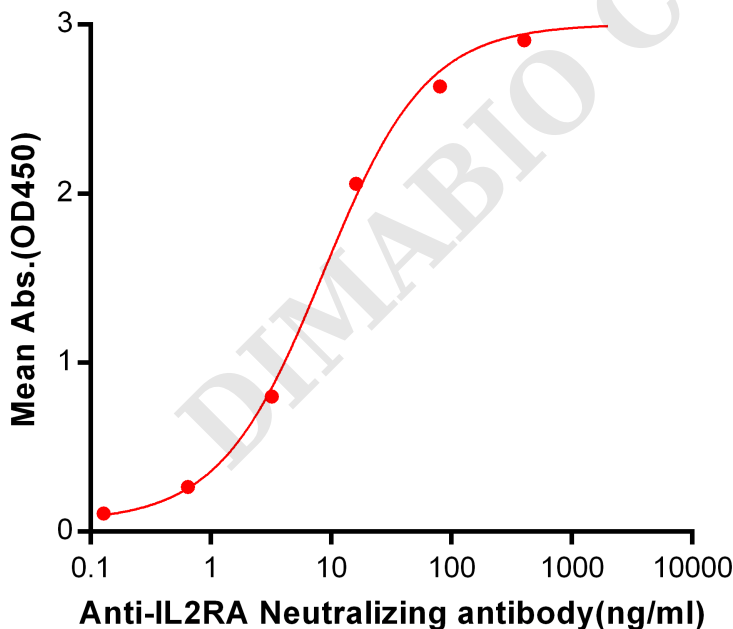


Figure 2. ELISA plate pre-coated by 2 µg/ml (100 µl/well) Human IL2RA, His tagged protein (PME100098) can bind Anti-IL2RA Neutralizing antibody BME100043 in a linear range of 0.64-400 ng/ml.



Human IL2RA, His tagged protein ELISA

0.2 μg of Human IL2RA, His tagged protein per well

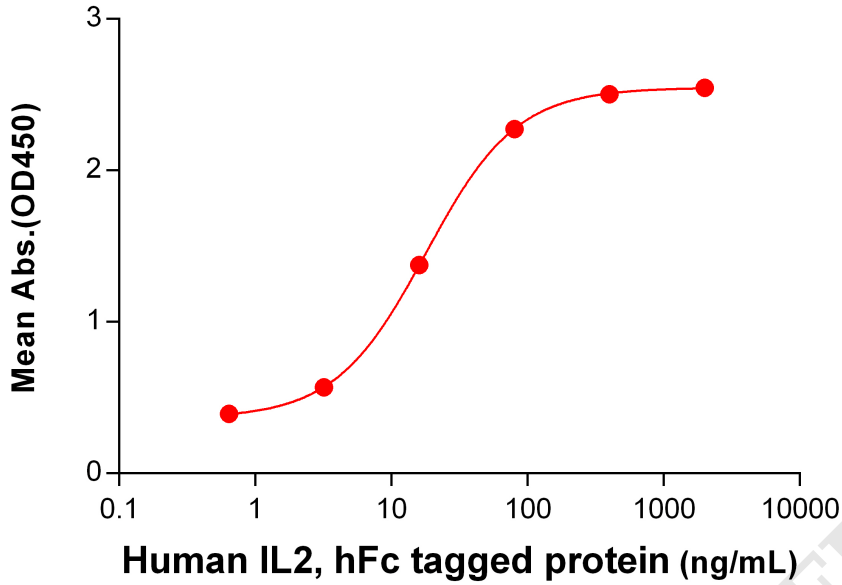


Figure 3. ELISA plate pre-coated by 2 $\mu\text{g}/\text{mL}$ (100 $\mu\text{L}/\text{well}$) Human IL2RA Protein, His Tag (PME100098) can bind Human IL2 Protein, hFc Tag PME100300 in a linear range of 0.64-400 ng/mL.

