

PRODUCT INFORMATION

Target	IL5
Synonyms	IL-5;TRF;Interleukin-5;EDF
Description	Recombinant Human IL5 protein with C-terminal human Fc tag
Delivery	In Stock
Uniprot ID	P05113
Expression Host	HEK293
Tag	C-Human Fc Tag
Molecular Characterization	IL5(Ile20-Ser134) hFc(Glu99-Ala330)
Molecular Weight	The protein has a predicted molecular mass of 39.3 kDa after removal of the signal peptide. The apparent molecular mass of IL5-hFc is approximately 35-55 kDa due to glycosylation.
Purity	The purity of the protein is greater than 95% as determined by SDS-PAGE and Coomassie blue staining.
Formulation & Reconstitution	Lyophilized from sterile PBS, pH 7.4. Normally 5% - 8% trehalose is added as protectants before lyophilization. Please see Certificate of Analysis for specific instructions of reconstitution.
Storage & Shipping	Store at -20°C to -80°C for 12 months in lyophilized form. After reconstitution, if not intended for use within a month, aliquot and store at -80°C (Avoid repeated freezing and thawing). Lyophilized proteins are shipped at ambient temperature.
Background	This gene encodes a cytokine that acts as a growth and differentiation factor for both B cells and eosinophils. The encoded cytokine plays a major role in the regulation of eosinophil formation, maturation, recruitment and survival. The increased production of this cytokine may be related to pathogenesis of eosinophil-dependent inflammatory diseases. This cytokine functions by binding to its receptor, which is a heterodimer, whose beta subunit is shared with the receptors for interleukine 3 (IL3) and colony stimulating factor 2 (CSF2/GM-CSF). This gene is located on chromosome 5 within a cytokine gene cluster which includes interleukin 4 (IL4), interleukin 13 (IL13), and CSF2 . This gene, IL4, and IL13 may be regulated coordinately by long-range regulatory elements spread over 120 kilobases on chromosome 5q31.
Usage	Research use only



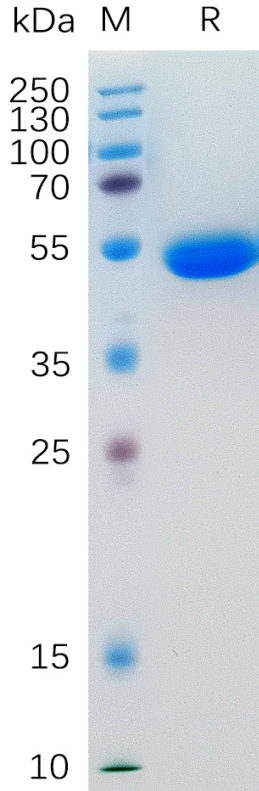


Figure 1. Human IL5 Protein, hFc Tag on SDS-PAGE under reducing condition.

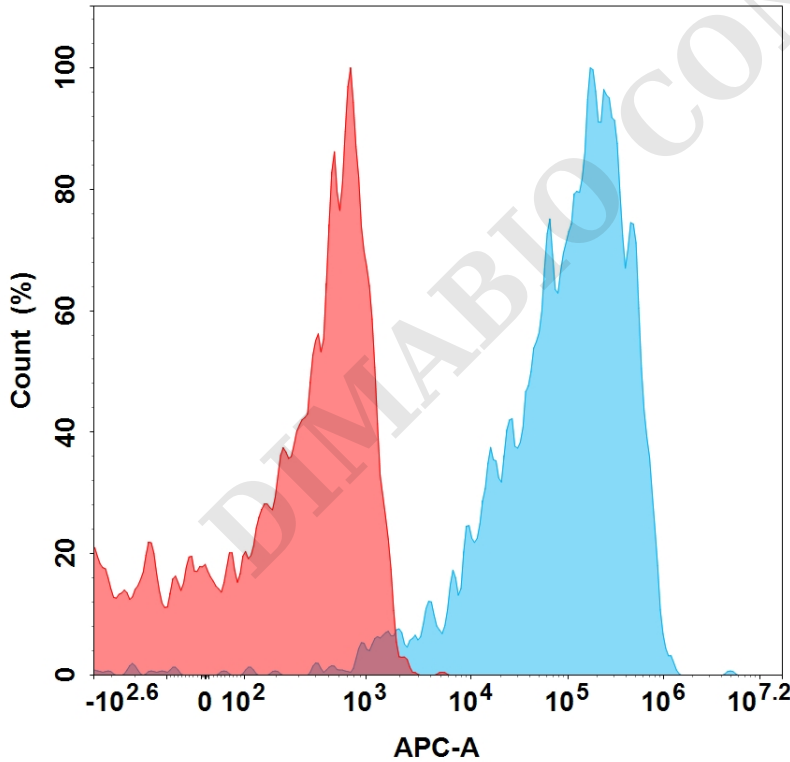


Figure 2. Flow cytometry analysis with 15 $\mu\text{g}/\text{mL}$ Human IL5 Protein, hFc Tag (PME100537) on Expi293 cells transfected with Human IL5RA protein (Blue histogram) or Expi293 transfected with irrelevant protein (Red histogram).



Human IL5,hFc Tagged protein ELISA

0.2 μ g of Human IL5, hFc tagged protein per well

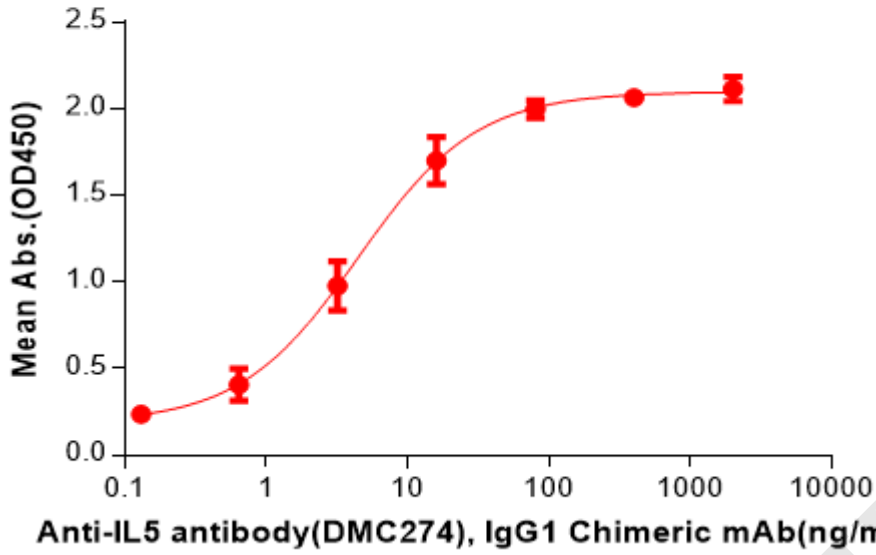


Figure 3. ELISA plate pre-coated by 2 μ g/mL (100 μ L/well) Human IL5 Protein, hFc Tag(PME100537) can bind Anti-IL5 antibody(DMC274), IgG1 Chimeric mAb in a linear range of 0.64-16 ng/mL.

DIMABIO CONFIDENTIAL

