

PRODUCT INFORMATION

Target	IL5
Synonyms	IL-5;TRF;Interleukin-5;EDF
Description	Recombinant Human IL5 protein with C-terminal 6×His tag
Delivery	In Stock
Uniprot ID	P05113
Expression Host	HEK293
Tag	C-6×His Tag
Molecular Characterization	IL5(Ile20-Ser134) 6×His tag
Molecular Weight	The protein has a predicted molecular mass of 13.94 kDa after removal of the signal peptide. The apparent molecular mass of IL5-His is approximately 15-25 kDa due to glycosylation.
Purity	The purity of the protein is greater than 95% as determined by SDS-PAGE and Coomassie blue staining.
Formulation & Reconstitution	Lyophilized from sterile PBS, pH 7.4. Normally 5 % - 8% trehalose is added as protectants before lyophilization. Please see Certificate of Analysis for specific instructions of reconstitution.
Storage & Shipping	Store at -20°C to -80°C for 12 months in lyophilized form. After reconstitution, if not intended for use within a month, aliquot and store at -80°C (Avoid repeated freezing and thawing). Lyophilized proteins are shipped at ambient temperature.
Background	This gene encodes a cytokine that acts as a growth and differentiation factor for both B cells and eosinophils. The encoded cytokine plays a major role in the regulation of eosinophil formation, maturation, recruitment and survival. The increased production of this cytokine may be related to pathogenesis of eosinophil-dependent inflammatory diseases. This cytokine functions by binding to its receptor, which is a heterodimer, whose beta subunit is shared with the receptors for interleukine 3 (IL3) and colony stimulating factor 2 (CSF2/GM-CSF). This gene is located on chromosome 5 within a cytokine gene cluster which includes interleukin 4 (IL4), interleukin 13 (IL13), and CSF2 . This gene, IL4, and IL13 may be regulated coordinately by long-range regulatory elements spread over 120 kilobases on chromosome 5q31.
Usage	Research use only
Conjugate	Unconjugated



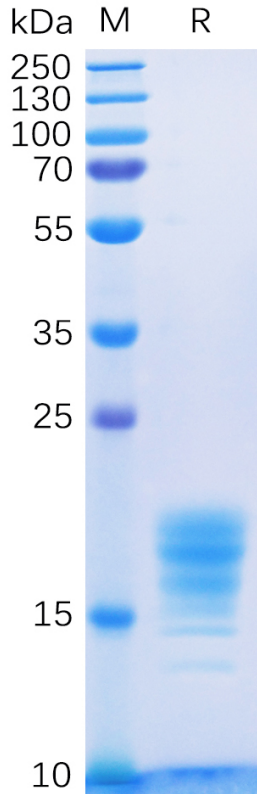


Figure 1. Human IL5 Protein, His Tag on SDS-PAGE under reducing condition.

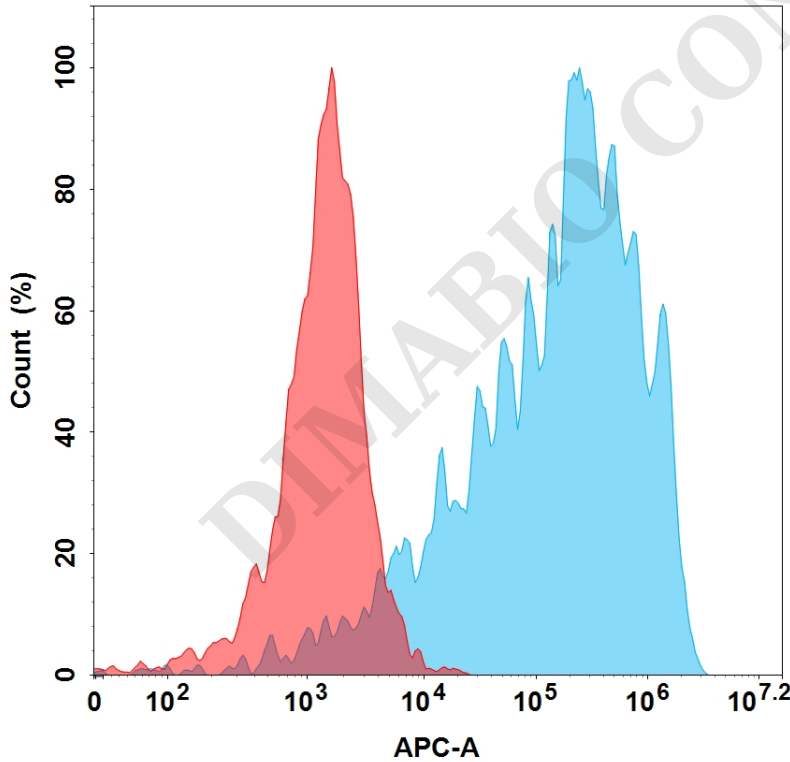


Figure 2. Flow cytometry analysis with 1 $\mu\text{g}/\text{mL}$ Human IL5 Protein, His Tag (PME100085) on Expi293 cells transfected with Human IL5RA protein (Blue histogram) or Expi293 transfected with irrelevant protein (Red histogram).



Human IL5, His tagged protein ELISA

0.5 μ g of Human IL5, His tagged protein per well

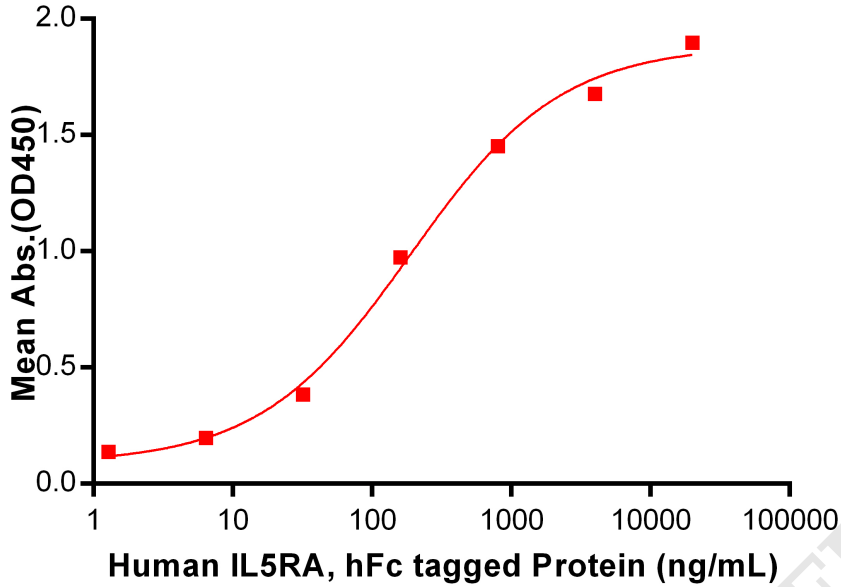


Figure 3. ELISA plate pre-coated by 5 μ g/mL (100 μ L/well) Human IL5 protein, His Tag (PME100085) can bind Human IL5RA Protein, hFc Tag PME100536 in a linear range of 6.4-4000 ng/mL.

