

PRODUCT INFORMATION

Target	IL6R
Synonyms	CD126;gp80;IL-6R-1;IL-6RA;IL6Q;IL6RA;IL6RQ
Description	Recombinant Human IL6R Protein with C-terminal 6×His tag
Delivery	In Stock
Uniprot ID	P08887
Expression Host	HEK293
Tag	C-6×His Tag
Molecular Characterization	IL6R(Leu20-Pro365) 6×His tag
Molecular Weight	The protein has a predicted molecular mass of 39.4 kDa after removal of the signal peptide. The apparent molecular mass of IL6R-His is approximately 55-70 kDa due to glycosylation.
Purity	The purity of the protein is greater than 95% as determined by SDS-PAGE and Coomassie blue staining.
Formulation & Reconstitution	Lyophilized from sterile PBS, pH 7.4. Normally 5% - 8% trehalose is added as protectants before lyophilization. Please see Certificate of Analysis for specific instructions of reconstitution.
Storage & Shipping	Store at -20°C to -80°C for 12 months in lyophilized form. After reconstitution, if not intended for use within a month, aliquot and store at -80°C (Avoid repeated freezing and thawing). Lyophilized proteins are shipped at ambient temperature.
Background	This gene encodes a subunit of the interleukin 6 (IL6) receptor complex. Interleukin 6 is a potent pleiotropic cytokine that regulates cell growth and differentiation and plays an important role in the immune response. The IL6 receptor is a protein complex consisting of this protein and interleukin 6 signal transducer (IL6ST/GP130/IL6-beta), a receptor subunit also shared by many other cytokines. Dysregulated production of IL6 and this receptor are implicated in the pathogenesis of many diseases, such as multiple myeloma, autoimmune diseases and prostate cancer. Alternatively spliced transcript variants encoding distinct isoforms have been reported. A pseudogene of this gene is found on chromosome 9.
Usage	Research use only
Conjugate	Unconjugated



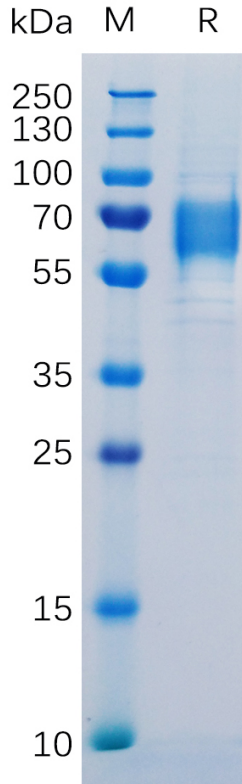


Figure 1. Human IL6R Protein, His Tag on SDS-PAGE under reducing condition.

Human IL6R, His Tagged protein ELISA

0.2 µg of IL6R, His Tagged protein per well

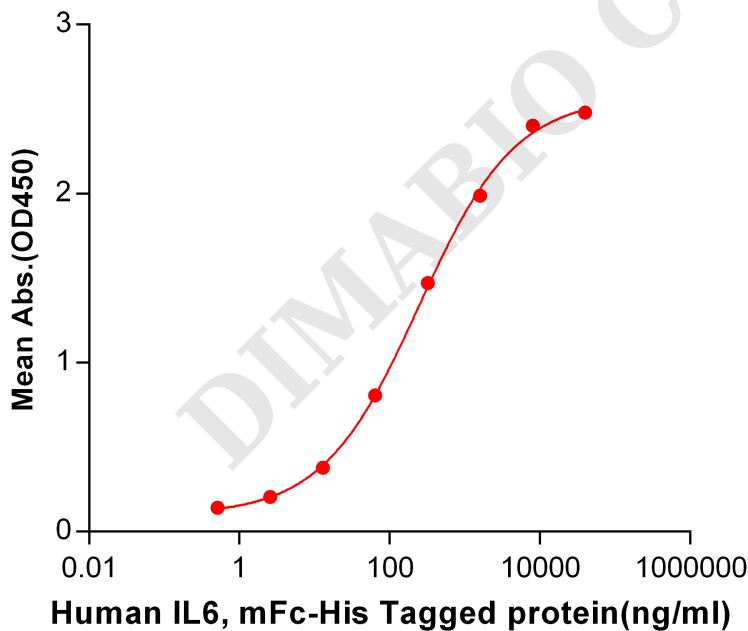


Figure 2. ELISA plate pre-coated by 2 µg/ml (100 µl/well) Human IL6R, His tagged protein (PME100109) can bind Human IL6, mFc-His tagged protein PME100032 in a linear range of 0.512-40000 ng/ml.



Human IL6R, His Tagged Protein ELISA

0.2 µg of Human IL6R, His Tagged protein per well

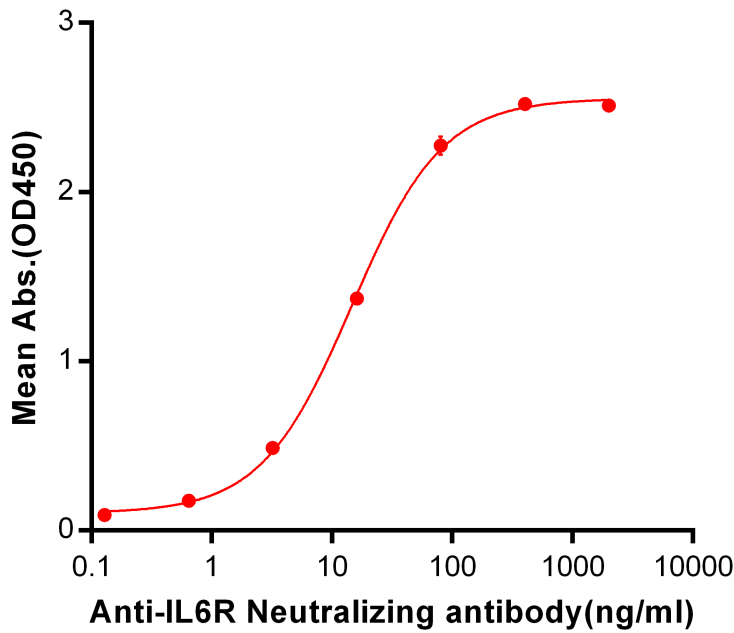


Figure 3. ELISA plate pre-coated by 2 µg/ml (100 µl/well) Human IL6R, His tagged protein (PME100109) can bind Anti-IL6R Neutralizing antibody BME100041 in a linear range of 0.64-80 ng/ml.

DIMABIO CONFIDENTIAL

