

**PRODUCT INFORMATION**

<b>Target</b>	LongIGF-II
<b>Synonyms</b>	Insulin-Like Growth Factor II;IGF-II;Somatomedin-A;IGF2;PP1446
<b>Description</b>	Recombinant Human Long Insulin-Like Growth Factor II is produced by our E.coli expression system and the target gene encoding Ala25-Glu91 is expressed.
<b>Delivery</b>	In Stock
<b>Uniprot ID</b>	P01344
<b>Expression Host</b>	E.coli
<b>Tag</b>	
<b>Molecular Characterization</b>	Not available
<b>Molecular Weight</b>	8.91 KDa
<b>Purity</b>	Greater than 95% as determined by reducing SDS-PAGE.
<b>Formulation &amp; Reconstitution</b>	Lyophilized from a 0.2 $\mu$ m filtered solution of 5mM HAC, pH 3.0.
<b>Storage &amp; Shipping</b>	Store at -20°C to -80°C for 12 months in lyophilized form. After reconstitution, if not intended for use within a month, aliquot and store at -80°C (Avoid repeated freezing and thawing). Lyophilized proteins are shipped at ambient temperature.
<b>Background</b>	Insulin-Like Growth Factor II (IGF2) belongs to the insulin family of polypeptide growth factors that is involved in development and growth. Members of this family are structurally homologous to proinsulin, and share higher sequence identity. IGF2 is expressed only from the paternally inherited allele and believed to be secreted by the liver and to circulate in the blood. IGF2 possess growth-promoting activity and can stimulate the proliferation and survival of various cell types including muscle, bone, and cartilage tissue in vitro. IGF2 is influenced by placental lactogen and may play a role in fetal development.
<b>Usage</b>	Research use only
<b>Conjugate</b>	Unconjugated



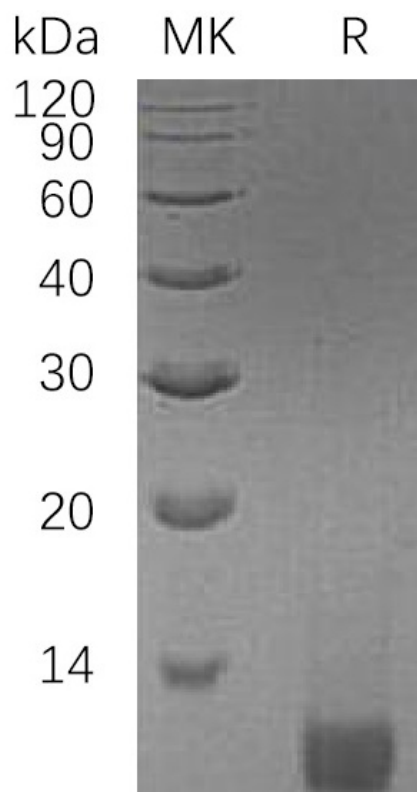


Figure 1. Greater than 95% as determined by reducing SDS-PAGE.

DIMABIO CONFIDENTIAL

