

**PRODUCT INFORMATION**

<b>Target</b>	LRG1
<b>Synonyms</b>	HMFT1766;LRG
<b>Description</b>	Recombinant Human LRG1 Protein with C-terminal 6×His tag
<b>Delivery</b>	In Stock
<b>Uniprot ID</b>	P02750
<b>Expression Host</b>	HEK293
<b>Tag</b>	C-6×His Tag
<b>Molecular Characterization</b>	LRG1(Val36-Gln347) 6×His tag
<b>Molecular Weight</b>	The protein has a predicted molecular mass of 35.2 kDa after removal of the signal peptide. The apparent molecular mass of LRG1-His is approximately 35-55 kDa due to glycosylation.
<b>Purity</b>	The purity of the protein is greater than 85% as determined by SDS-PAGE and Coomassie blue staining.
<b>Formulation &amp; Reconstitution</b>	Lyophilized from sterile PBS, pH 7.4. Normally 5 % - 8% trehalose is added as protectants before lyophilization. Please see Certificate of Analysis for specific instructions of reconstitution.
<b>Storage &amp; Shipping</b>	Store at -20°C to -80°C for 12 months in lyophilized form. After reconstitution, if not intended for use within a month, aliquot and store at -80°C (Avoid repeated freezing and thawing). Lyophilized proteins are shipped at ambient temperature.
<b>Background</b>	The leucine-rich repeat (LRR) family of proteins, including LRG1, have been shown to be involved in protein-protein interaction, signal transduction, and cell adhesion and development. LRG1 is expressed during granulocyte differentiation (O'Donnell et al., 2002 [PubMed 12223515]).[supplied by OMIM, Mar 2008]
<b>Usage</b>	Research use only
<b>Conjugate</b>	Unconjugated



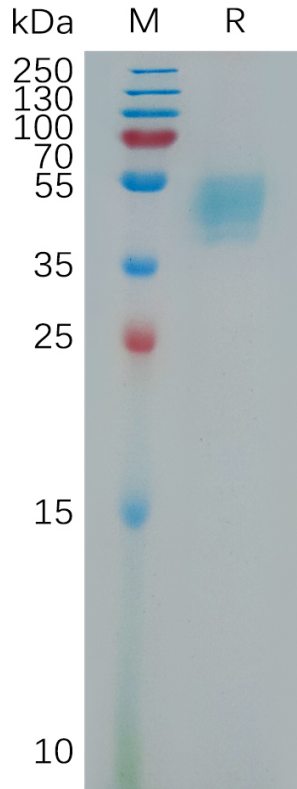


Figure 1. Human LRG1 Protein, His Tag on SDS-PAGE under reducing condition.

DIMABIO CONFIDENTIAL

