

PRODUCT INFORMATION

Target	M-CSF
Synonyms	CSF-1;MCSF
Description	Recombinant Human M-CSF Protein with C-terminal human Fc tag
Delivery	In Stock
Uniprot ID	P09603
Expression Host	HEK293
Tag	C-Human Fc Tag
Molecular Characterization	M-CSF(Glu33-Arg255) hFc(Glu99-Ala330)
Molecular Weight	The protein has a predicted molecular mass of 51.3 kDa after removal of the signal peptide. The apparent molecular mass of M-CSF-hFc is approximately 55-70 kDa due to glycosylation.
Purity	The purity of the protein is greater than 95% as determined by SDS-PAGE and Coomassie blue staining.
Formulation & Reconstitution	Lyophilized from sterile PBS, pH 7.4. Normally 5 % - 8% trehalose is added as protectants before lyophilization. Please see Certificate of Analysis for specific instructions of reconstitution.
Storage & Shipping	Store at -20°C to -80°C for 12 months in lyophilized form. After reconstitution, if not intended for use within a month, aliquot and store at -80°C (Avoid repeated freezing and thawing). Lyophilized proteins are shipped at ambient temperature.
Background	The protein encoded by this gene is a cytokine that controls the production, differentiation, and function of macrophages. The active form of the protein is found extracellularly as a disulfide-linked homodimer, and is thought to be produced by proteolytic cleavage of membrane-bound precursors. The encoded protein may be involved in development of the placenta. Alternate splicing results in multiple transcript variants. [provided by RefSeq, Sep 2011]
Usage	Research use only
Conjugate	Unconjugated



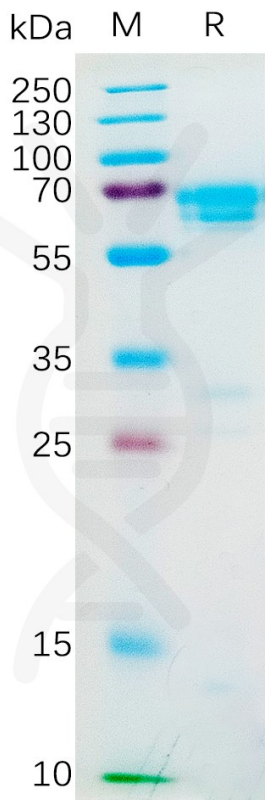


Figure 1. Human M-CSF Protein, hFc Tag on SDS-PAGE under reducing condition.

Human M-CSF, hFc tagged protein ELISA

0.2 µg of Human CSF1R, His tagged protein per well

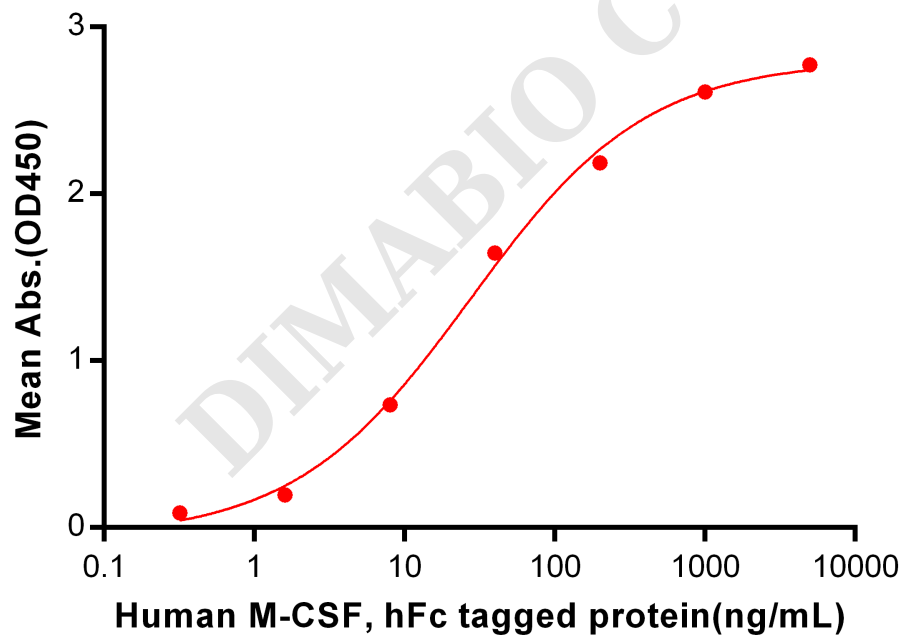


Figure 2. ELISA plate pre-coated by 2 µg/ml (100 µl/well) Human CSF1R, His tagged protein PME100067 can bind Human M-CSF, hFc Tagged protein PME100550 in a linear range of 0.32-200 ng/ml.



Human M-CSF, hFc Tagged protein ELISA
0.2 µg of Human M-CSF, hFc tagged protein per well

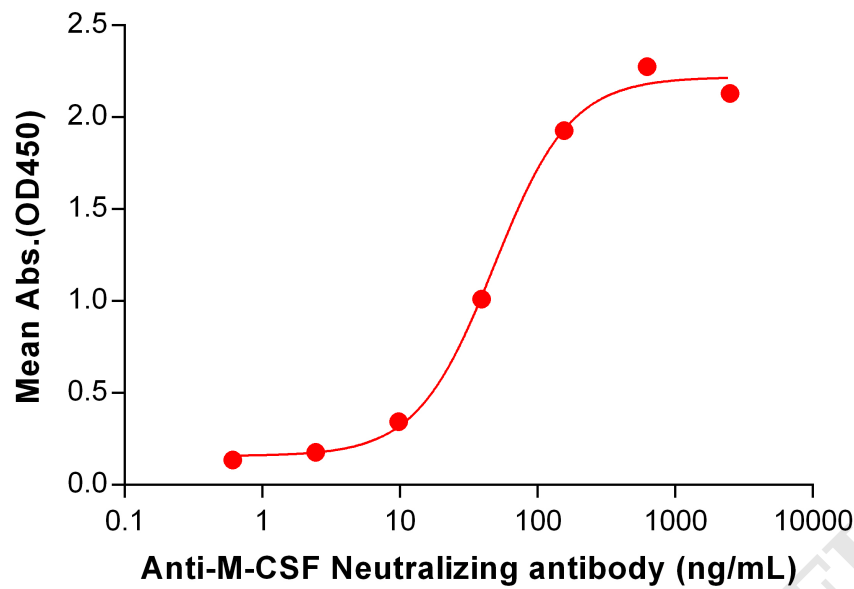


Figure 3. ELISA plate pre-coated by 2 µg/mL (100 µL/well) Human M-CSF Protein, hFc Tag (PME100550) can bind Anti-M-CSF Neutralizing antibody BME100104 in a linear range of 9.77-156.25 ng/mL.

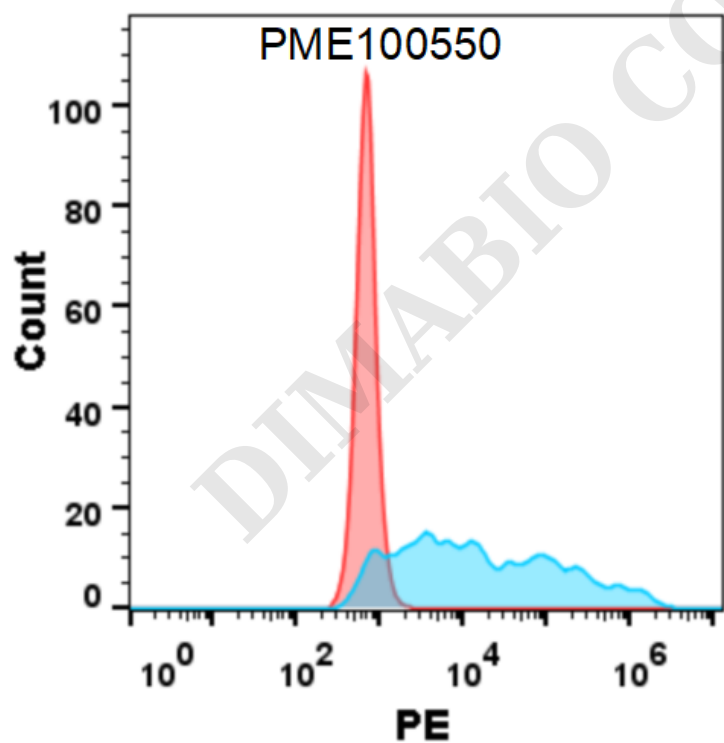


Figure 4. Flow cytometry analysis with 1 µg/mL Human M-CSF Protein, hFc tag (PME100550) on Expi293 cells transfected with human CSF1R (Blue histogram) or Expi293 transfected with irrelevant protein (Red histogram).

