

**PRODUCT INFORMATION**

<b>Target</b>	MIF
<b>Synonyms</b>	GIF;GLIF;MMIF
<b>Description</b>	Recombinant human MIF protein with C-terminal hFc tag
<b>Delivery</b>	In Stock
<b>Uniprot ID</b>	P14174
<b>Expression Host</b>	HEK293
<b>Tag</b>	C-Human Fc Tag
<b>Molecular Characterization</b>	MIF(Pro2-Ala115) hFc(Glu99-Ala330)
<b>Molecular Weight</b>	The protein has a predicted molecular mass of 38.5 kDa after removal of the signal peptide. The apparent molecular mass of MIF-hFc is approximately 35-55 kDa due to glycosylation.
<b>Purity</b>	The purity of the protein is greater than 95% as determined by SDS-PAGE and Coomassie blue staining.
<b>Formulation &amp; Reconstitution</b>	Lyophilized from sterile PBS, pH 7.4. Normally 5% - 8% trehalose is added as protectants before lyophilization. Please see Certificate of Analysis for specific instructions of reconstitution.
<b>Storage &amp; Shipping</b>	Store at -20°C to -80°C for 12 months in lyophilized form. After reconstitution, if not intended for use within a month, aliquot and store at -80°C (Avoid repeated freezing and thawing). Lyophilized proteins are shipped at ambient temperature.
<b>Background</b>	This gene encodes a lymphokine involved in cell-mediated immunity, immunoregulation, and inflammation. It plays a role in the regulation of macrophage function in host defense through the suppression of anti-inflammatory effects of glucocorticoids. This lymphokine and the JAB1 protein form a complex in the cytosol near the peripheral plasma membrane, which may indicate an additional role in integrin signaling pathways. [provided by RefSeq, Jul 2008]
<b>Usage</b>	Research use only
<b>Conjugate</b>	Unconjugated



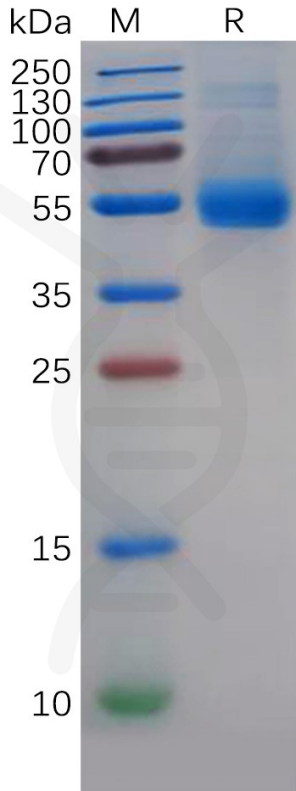


Figure 1. Human MIF Protein, hFc Tag on SDS-PAGE under reducing condition.

### Human MIF, hFc Tagged protein ELISA

0.2 µg of Human MIF, hFc tagged protein per well

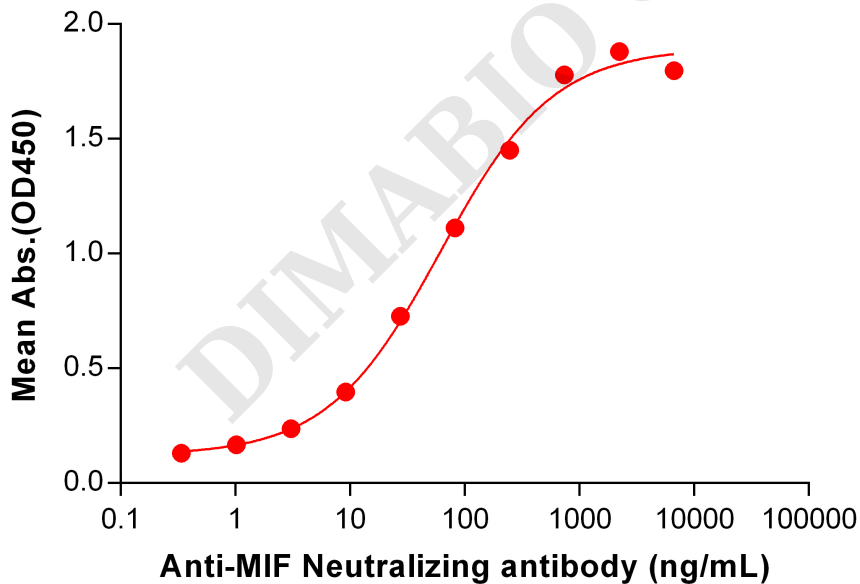


Figure 2. ELISA plate pre-coated by 2 µg/mL (100 µL/well) Human MIF Protein, hFc Tag ( PME100350) can bind Anti-MIF Neutralizing antibody BME100098 in a linear range of 3.05-740.74 ng/mL.

