

**PRODUCT INFORMATION**

<b>Target</b>	NEFL
<b>Synonyms</b>	CMT1F;CMT2E;CMTDIG;NF-L;NF68;NFL;PPP1R110
<b>Description</b>	Recombinant Human NEFL(9-88) with C-terminal human Fc tag
<b>Delivery</b>	In Stock
<b>Uniprot ID</b>	P07196
<b>Expression Host</b>	HEK293
<b>Tag</b>	C-Human Fc Tag
<b>Molecular Characterization</b>	NEFL(Tyr9-Thr88) hFc(Glu99-Ala330)
<b>Molecular Weight</b>	The protein has a predicted molecular mass of 34.9 kDa after removal of the signal peptide. The apparent molecular mass of NEFL(9-88)-hFc is approximately 35-55 kDa due to glycosylation.
<b>Purity</b>	The purity of the protein is greater than 95% as determined by SDS-PAGE and Coomassie blue staining.
<b>Formulation &amp; Reconstitution</b>	Lyophilized from sterile PBS, pH 7.4. Normally 5 % - 8% trehalose is added as protectants before lyophilization. Please see Certificate of Analysis for specific instructions of reconstitution.
<b>Storage &amp; Shipping</b>	Store at -20°C to -80°C for 12 months in lyophilized form. After reconstitution, if not intended for use within a month, aliquot and store at -80°C (Avoid repeated freezing and thawing). Lyophilized proteins are shipped at ambient temperature.
<b>Background</b>	Neurofilaments are type IV intermediate filament heteropolymers composed of light, medium, and heavy chains. Neurofilaments comprise the axoskeleton and they functionally maintain the neuronal caliber. They may also play a role in intracellular transport to axons and dendrites. This gene encodes the light chain neurofilament protein. Mutations in this gene cause Charcot-Marie-Tooth disease types 1F (CMT1F) and 2E (CMT2E), disorders of the peripheral nervous system that are characterized by distinct neuropathies. A pseudogene has been identified on chromosome Y. [provided by RefSeq, Oct 2008]
<b>Usage</b>	Research use only
<b>Conjugate</b>	Unconjugated



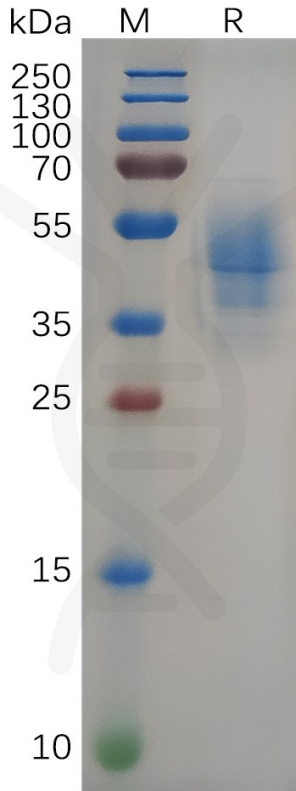


Figure 1. Human NEFL(9-88) Protein, hFc Tag on SDS-PAGE under reducing condition.

### Human NEFL(9-88), hFc tagged protein ELISA

0.1  $\mu$ g of Human NEFL(9-88), hFc tagged protein per well

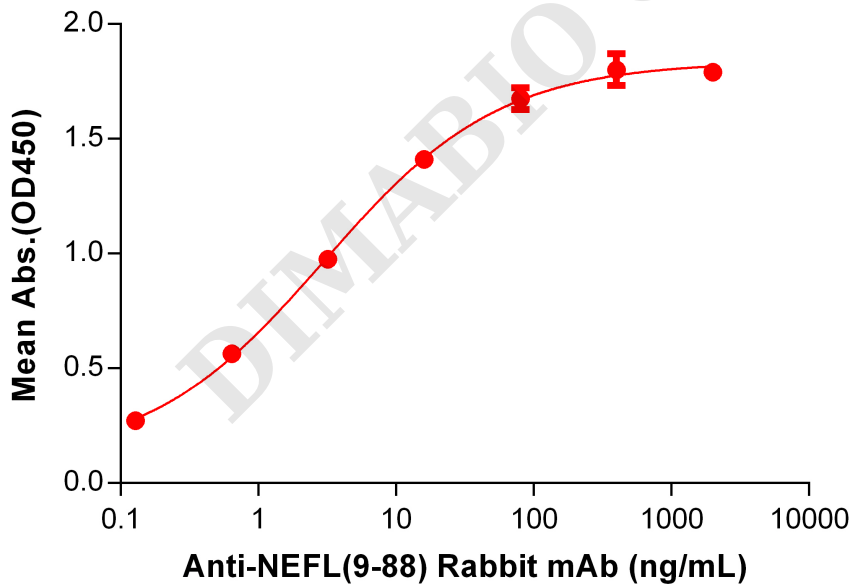


Figure 2. ELISA plate pre-coated by 1  $\mu$ g/mL (100  $\mu$ L/well) Human NEFL (9-88) Protein, hFc Tag (PME100654) can bind Anti-NEFL(9-88) antibody(DM198), Rabbit mAb DME100198 in a linear range of 0.128-80 ng/mL.

