

PRODUCT INFORMATION

| | |
|---|--|
| Target | NKG2C |
| Synonyms | KLRC2; CD159c; NKG2-C |
| Description | Recombinant human NKG2C Protein with N-terminal human Fc tag |
| Delivery | In Stock |
| Uniprot ID | P26717 |
| Expression Host | HEK293 |
| Tag | N-Human Fc tag |
| Molecular Characterization | hFc(Glu99-Ala330) NKG2C(Ile94-Leu231) |
| Molecular Weight | The protein has a predicted molecular mass of 42.0 kDa after removal of the signal peptide. |
| Purity | The purity of the protein is greater than 95% as determined by SDS-PAGE and Coomassie blue staining. |
| Formulation & Reconstitution | Lyophilized from sterile PBS, pH 7.4. Normally 5% - 8% trehalose is added as protectants before lyophilization. Please see Certificate of Analysis for specific instructions of reconstitution. |
| Storage & Shipping | Store at -20°C to -80°C for 12 months in lyophilized form. After reconstitution, if not intended for use within a month, aliquot and store at -80°C (Avoid repeated freezing and thawing). Lyophilized proteins are shipped at ambient temperature. |
| Background | Natural killer (NK) cells are lymphocytes that can mediate lysis of certain tumor cells and virus-infected cells without previous activation. They can also regulate specific humoral and cell-mediated immunity. NK cells preferentially express several calcium-dependent (C-type) lectins, which have been implicated in the regulation of NK cell function. The group, designated KLRC (NKG2) are expressed primarily in natural killer (NK) cells and encodes a family of transmembrane proteins characterized by a type II membrane orientation (extracellular C terminus) and the presence of a C-type lectin domain. The KLRC (NKG2) gene family is located within the NK complex, a region that contains several C-type lectin genes preferentially expressed on NK cells. KLRC2 alternative splice variants have been described but their full-length nature has not been determined. [provided by RefSeq, Jul 2008] |
| Usage | Research use only |



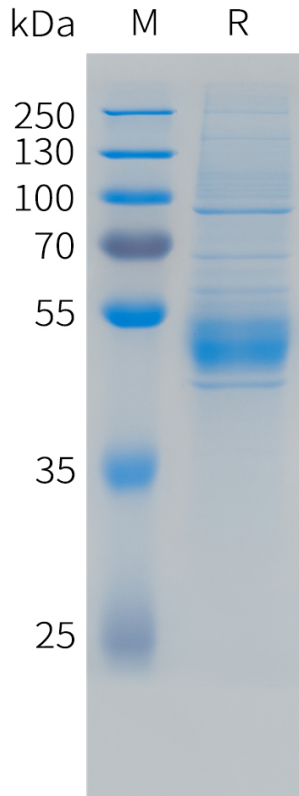


Figure 1. Human NKG2C Protein, hFc Tag on SDS-PAGE under reducing condition.

DIMABIO CONFIDENTIAL

