

**PRODUCT INFORMATION**

<b>Target</b>	PGF
<b>Synonyms</b>	D12S1900;PGFL;PIGF;PLGF;PIGF-2;SHGC-10760
<b>Description</b>	Recombinant Human PGF with C-terminal human Fc tag
<b>Delivery</b>	In Stock
<b>Uniprot ID</b>	P49763
<b>Expression Host</b>	HEK293
<b>Tag</b>	C-Human Fc Tag
<b>Molecular Characterization</b>	PGF(Leu19-Arg170) hFc(Glu99-Ala330)
<b>Molecular Weight</b>	The protein has a predicted molecular mass of 43.5 kDa after removal of the signal peptide. The apparent molecular mass of PGF-hFc is approximately 35-55 kDa due to glycosylation.
<b>Purity</b>	The purity of the protein is greater than 95% as determined by SDS-PAGE and Coomassie blue staining.
<b>Formulation &amp; Reconstitution</b>	Lyophilized from sterile PBS, pH 7.4. Normally 5% - 8% trehalose is added as protectants before lyophilization. Please see Certificate of Analysis for specific instructions of reconstitution.
<b>Storage &amp; Shipping</b>	Store at -20°C to -80°C for 12 months in lyophilized form. After reconstitution, if not intended for use within a month, aliquot and store at -80°C (Avoid repeated freezing and thawing). Lyophilized proteins are shipped at ambient temperature.
<b>Background</b>	This gene encodes a growth factor found in placenta which is homologous to vascular endothelial growth factor. Alternatively spliced transcripts encoding different isoforms have been found for this gene.[provided by RefSeq, Jun 2011]
<b>Usage</b>	Research use only



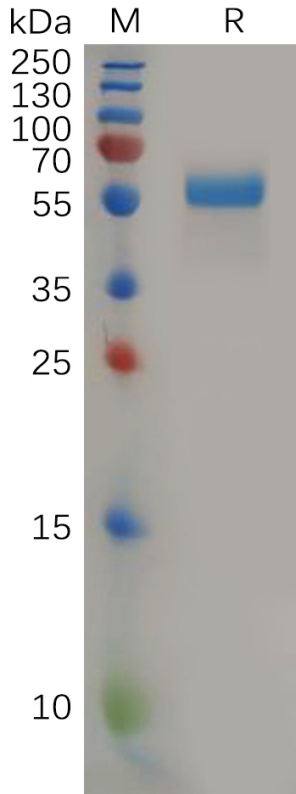


Figure 1. Human PGF Protein, hFc Tag on SDS-PAGE under reducing condition.

**Human PGF,hFc Tagged protein ELISA**  
0.2 µg of Human PGF, hFc tagged protein per well

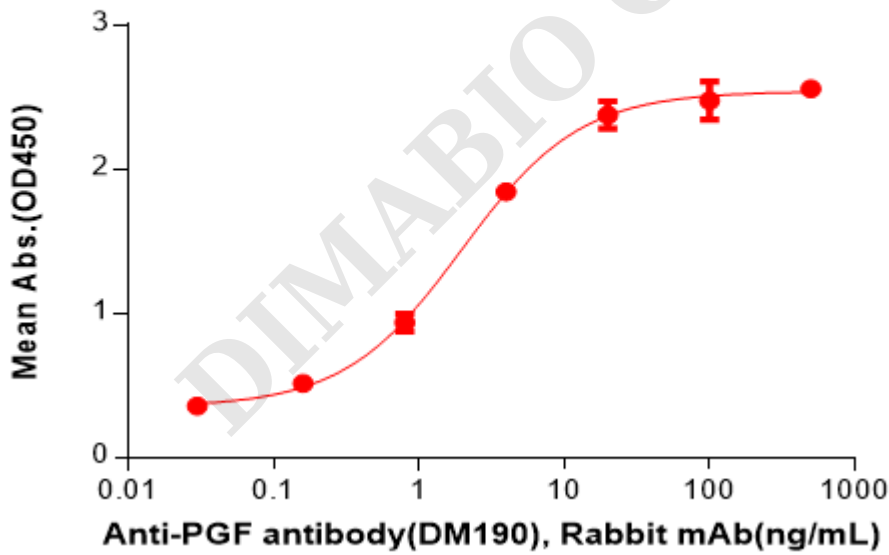


Figure 2. ELISA plate pre-coated by 2 µg/mL (100 µL/well) Human PGF Protein, hFc Tag(PME100579) can bind Anti-PGF antibody(DM190), Rabbit mAb in a linear range of 0.80-4.00 ng/mL.

