

PRODUCT INFORMATION

Target	PLA2R1
Synonyms	CLEC13C;PLA2-R;PLA2G1R;PLA2IR;PLA2R
Description	Recombinant Human PLA2R1 Protein with C-terminal 10×His tag
Delivery	In Stock
Uniprot ID	Q13018
Expression Host	HEK293
Tag	C-10×His Tag
Molecular Characterization	PLA2R1(Glu21-Ser1397) 10×His tag
Molecular Weight	The protein has a predicted molecular mass of 160.5 kDa after removal of the signal peptide. The apparent molecular mass of PLA2R1-10×His is approximately 130-250 kDa due to glycosylation.
Purity	The purity of the protein is greater than 85% as determined by SDS-PAGE and Coomassie blue staining.
Formulation & Reconstitution	Lyophilized from sterile PBS, pH 7.4. Normally 5 % - 8% trehalose is added as protectants before lyophilization. Please see Certificate of Analysis for specific instructions of reconstitution.
Storage & Shipping	Store at -20°C to -80°C for 12 months in lyophilized form. After reconstitution, if not intended for use within a month, aliquot and store at -80°C (Avoid repeated freezing and thawing). Lyophilized proteins are shipped at ambient temperature.
Background	This gene represents a phospholipase A2 receptor. The encoded protein likely exists as both a transmembrane form and a soluble form. The transmembrane receptor may play a role in clearance of phospholipase A2, thereby inhibiting its action. Polymorphisms at this locus have been associated with susceptibility to idiopathic membranous nephropathy. Alternatively spliced transcript variants encoding different isoforms have been identified.[provided by RefSeq, Sep 2010]
Usage	Research use only



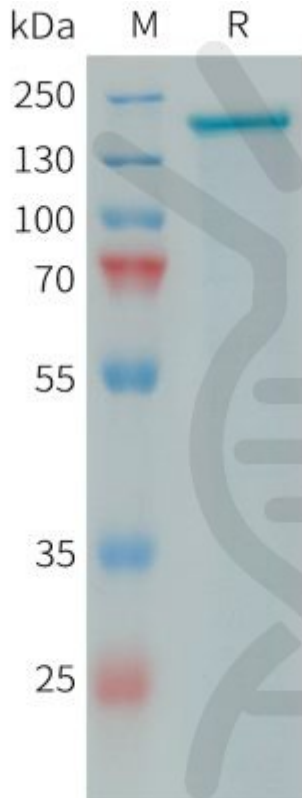


Figure 1. Human PLA2R1 Protein, His Tag on SDS-PAGE under reducing condition.

