

PRODUCT INFORMATION

Target	PRL
Synonyms	GHA1
Description	Recombinant human PRL Protein with C-terminal human Fc tag
Delivery	In Stock
Uniprot ID	P01236
Expression Host	HEK293
Tag	C-Human Fc tag
Molecular Characterization	PRL(Leu29-Cys227) hFc(Glu99-Ala330)
Molecular Weight	The protein has a predicted molecular mass of 49.0 kDa after removal of the signal peptide. The apparent molecular mass of PRL-hFc is approximately 35-55 kDa due to glycosylation.
Purity	The purity of the protein is greater than 95% as determined by SDS-PAGE and Coomassie blue staining.
Formulation & Reconstitution	Lyophilized from sterile PBS, pH 7.4. Normally 5% - 8% trehalose is added as protectants before lyophilization. Please see Certificate of Analysis for specific instructions.
Storage & Shipping	Store at -20°C to -80°C for 12 months in lyophilized form. After reconstitution, if not intended for use within a month, aliquot and store at -80°C (Avoid repeated freezing and thawing). Lyophilized proteins are shipped at ambient temperature.
Background	This gene encodes the anterior pituitary hormone prolactin. This secreted hormone is a growth regulator for many tissues, including cells of the immune system. It may also play a role in cell survival by suppressing apoptosis, and it is essential for lactation. Alternative splicing results in multiple transcript variants that encode the same protein. [provided by RefSeq, Aug 2011]
Usage	Research use only
Conjugate	Unconjugated



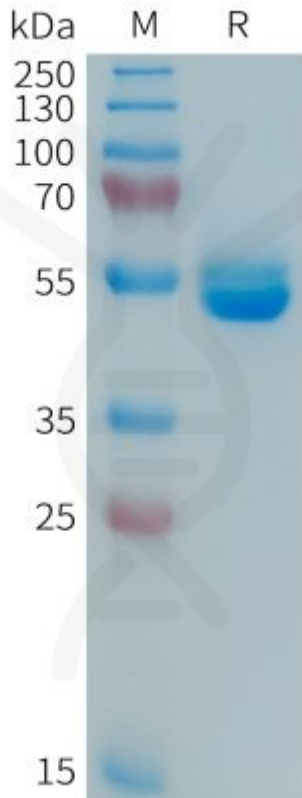


Figure 1. Human PRL Protein, hFc Tag on SDS-PAGE under reducing condition.

DIMABIO CONFIDENTIAL

