

## PRODUCT INFORMATION

<b>Target</b>	ROR1
<b>Synonyms</b>	ROR1;NTRKR1
<b>Description</b>	Recombinant Human ROR1(312-391) Protein with N-terminal human Fc tag
<b>Delivery</b>	In Stock
<b>Uniprot ID</b>	Q01973
<b>Expression Host</b>	HEK293
<b>Tag</b>	N-Human Fc Tag
<b>Molecular Characterization</b>	hFc(Glu99-Ala330) ROR1(Lys312-Cys391)
<b>Molecular Weight</b>	The protein has a predicted molecular mass of 35.2 kDa after removal of the signal peptide. The apparent molecular mass of hFc- ROR1(312-391) is approximately 35-55 kDa due to glycosylation.
<b>Purity</b>	The purity of the protein is greater than 95% as determined by SDS-PAGE and Coomassie blue staining.
<b>Formulation &amp; Reconstitution</b>	Lyophilized from sterile PBS, pH 7.4. Normally 5% - 8% trehalose is added as protectants before lyophilization. Please see Certificate of Analysis for specific instructions of reconstitution.
<b>Storage &amp; Shipping</b>	Store at -20°C to -80°C for 12 months in lyophilized form. After reconstitution, if not intended for use within a month, aliquot and store at -80°C (Avoid repeated freezing and thawing). Lyophilized proteins are shipped at ambient temperature.
<b>Background</b>	This gene encodes a receptor tyrosine kinase-like orphan receptor that modulates neurite growth in the central nervous system. The encoded protein is a glycosylated type I membrane protein that belongs to the ROR subfamily of cell surface receptors. It is a pseudokinase that lacks catalytic activity and may interact with the non-canonical Wnt signalling pathway. This gene is highly expressed during early embryonic development but expressed at very low levels in adult tissues. Increased expression of this gene is associated with B-cell chronic lymphocytic leukaemia. Alternative splicing results in multiple transcript variants encoding different isoforms. [provided by RefSeq, Jun 2012]
<b>Usage</b>	Research use only



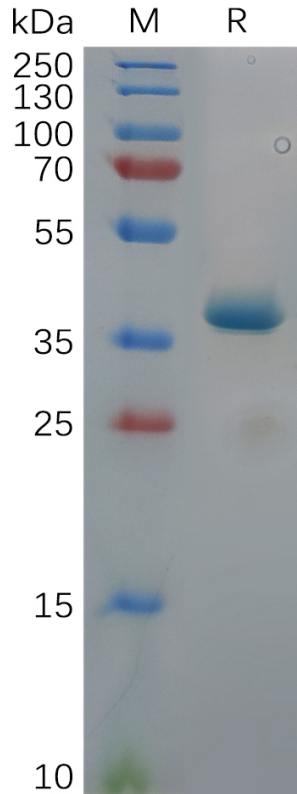


Figure 1. Human ROR1(312-391) Protein, hFc Tag on SDS-PAGE under reducing condition.

DIMABIO CONFIDENTIAL

