

## PRODUCT INFORMATION

<b>Target</b>	SCF
<b>Synonyms</b>	DCUA;DFNA69;FPH2;FPHH;Kitl;KL-1;MGF;SCF;SF;SHEP7;SLF
<b>Description</b>	Recombinant human SCF protein with C-terminal human Fc tag
<b>Delivery</b>	In Stock
<b>Uniprot ID</b>	P21583
<b>Expression Host</b>	HEK293
<b>Tag</b>	C-Human Fc Tag
<b>Molecular Characterization</b>	SCF(Glu26-His214) hFc(Glu99-Ala330)
<b>Molecular Weight</b>	The protein has a predicted molecular mass of 47.2 kDa after removal of the signal peptide. The apparent molecular mass of SCF-hFc is approximately 55-75 kDa due to glycosylation.
<b>Purity</b>	The purity of the protein is greater than 95% as determined by SDS-PAGE and Coomassie blue staining.
<b>Formulation &amp; Reconstitution</b>	Lyophilized from sterile PBS, pH 7.4. Normally 5% - 8% trehalose is added as protectants before lyophilization. Please see Certificate of Analysis for specific instructions of reconstitution.
<b>Storage &amp; Shipping</b>	Store at -20°C to -80°C for 12 months in lyophilized form. After reconstitution, if not intended for use within a month, aliquot and store at -80°C (Avoid repeated freezing and thawing). Lyophilized proteins are shipped at ambient temperature.
<b>Background</b>	This gene encodes the ligand of the tyrosine-kinase receptor encoded by the KIT locus. This ligand is a pleiotropic factor that acts in utero in germ cell and neural cell development, and hematopoiesis, all believed to reflect a role in cell migration. In adults, it functions pleiotropically, while mostly noted for its continued requirement in hematopoiesis. Two transcript variants encoding different isoforms have been found for this gene. [provided by RefSeq, Jul 2008]
<b>Usage</b>	Research use only
<b>Conjugate</b>	Unconjugated



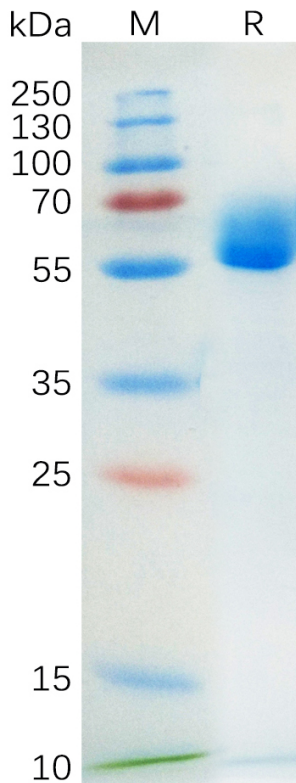


Figure 1. Human SCF Protein, hFc Tag on SDS-PAGE under reducing condition.

### Human SCF, hFc tagged protein ELISA

0.2  $\mu$ g of Human CD117, His tagged protein per well

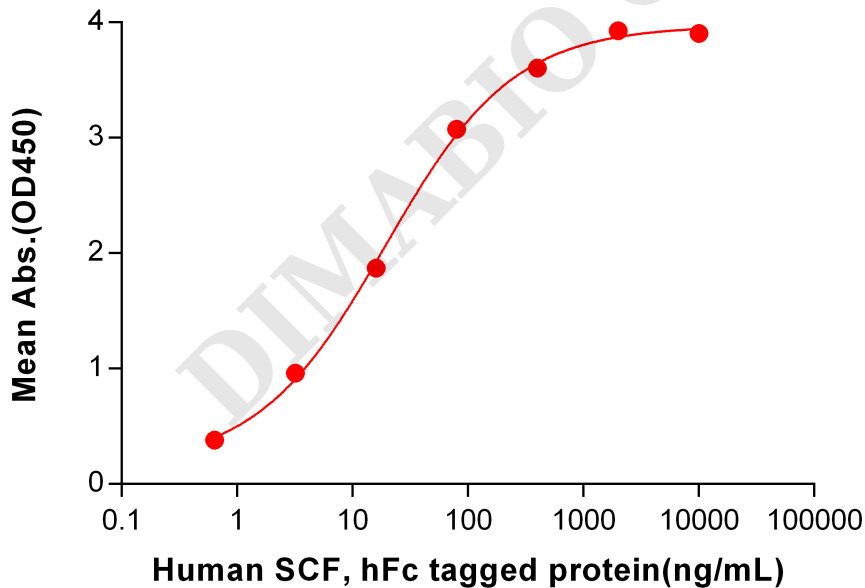


Figure 2. ELISA plate pre-coated by 1  $\mu$ g/ml (100  $\mu$ l/well) Human CD117, His tagged protein PME100519 can bind Human SCF, hFc tagged protein (PME100563) in a linear range of 3.2-400 ng/ml.

