

PRODUCT INFORMATION

Target	SLPI
Synonyms	ALP;BLPI;HUSI-1;MPI;WAP4;WFDC4
Description	Recombinant human SLPI protein with C-terminal human Fc tag
Delivery	In Stock
Uniprot ID	P03973
Expression Host	HEK293
Tag	C-Human Fc Tag
Molecular Characterization	SLPI(Ser26-Ala132) hFc(Glu99-Ala330)
Molecular Weight	The protein has a predicted molecular mass of 37.9 kDa after removal of the signal peptide. The apparent molecular mass of SLPI-hFc is approximately 35-55 kDa due to glycosylation.
Purity	The purity of the protein is greater than 95% as determined by SDS-PAGE and Coomassie blue staining.
Formulation & Reconstitution	Lyophilized from sterile PBS, pH 7.4. Normally 5% - 8% trehalose is added as protectants before lyophilization. Please see Certificate of Analysis for specific instructions of reconstitution.
Storage & Shipping	Store at -20°C to -80°C for 12 months in lyophilized form. After reconstitution, if not intended for use within a month, aliquot and store at -80°C (Avoid repeated freezing and thawing). Lyophilized proteins are shipped at ambient temperature.
Background	This gene encodes a secreted inhibitor which protects epithelial tissues from serine proteases. It is found in various secretions including seminal plasma, cervical mucus, and bronchial secretions, and has affinity for trypsin, leukocyte elastase, and cathepsin G. Its inhibitory effect contributes to the immune response by protecting epithelial surfaces from attack by endogenous proteolytic enzymes. This antimicrobial protein has antibacterial, antifungal and antiviral activity. [provided by RefSeq, Nov 2014]
Usage	Research use only



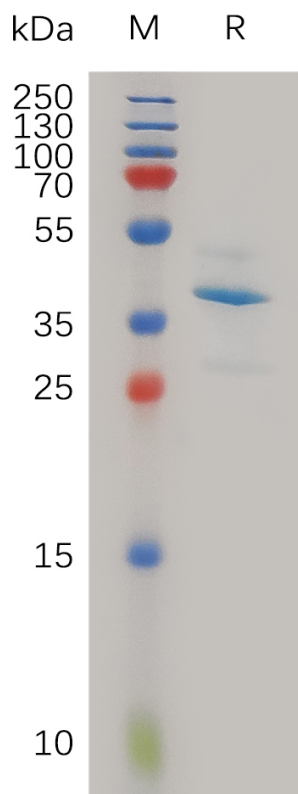


Figure 1. Human SLPI Protein, hFc Tag on SDS-PAGE under reducing condition.

DIMABIO CONFIDENTIAL

