

PRODUCT INFORMATION

Target	STAB1
Synonyms	Stabilin-1;FEEL-1;MS-1 antigen
Description	Recombinant human STAB1 protein with C-terminal human Fc tag
Delivery	In Stock
Uniprot ID	Q9NY15
Expression Host	HEK293
Tag	C-Human Fc Tag
Molecular Characterization	STAB1(Asp638-Leu1024) hFc(Glu99-Ala330)
Molecular Weight	The protein has a predicted molecular mass of 66.7 kDa after removal of the signal peptide. The apparent molecular mass of STAB1-hFc is approximately 70-100 kDa due to glycosylation.
Purity	The purity of the protein is greater than 95% as determined by SDS-PAGE and Coomassie blue staining.
Formulation & Reconstitution	Lyophilized from sterile PBS, pH 7.4. Normally 5% - 8% trehalose is added as protectants before lyophilization. Please see Certificate of Analysis for specific instructions of reconstitution.
Storage & Shipping	Store at -20°C to -80°C for 12 months in lyophilized form. After reconstitution, if not intended for use within a month, aliquot and store at -80°C (Avoid repeated freezing and thawing). Lyophilized proteins are shipped at ambient temperature.
Background	This gene encodes a large, transmembrane receptor protein which may function in angiogenesis, lymphocyte homing, cell adhesion, or receptor scavenging. The protein contains 7 fasciclin, 16 epidermal growth factor (EGF)-like, and 2 laminin-type EGF-like domains as well as a C-type lectin-like hyaluronan-binding Link module. The protein is primarily expressed on sinusoidal endothelial cells of liver, spleen, and lymph node. The receptor has been shown to endocytose ligands such as low density lipoprotein, Gram-positive and Gram-negative bacteria, and advanced glycosylation end products. Supporting its possible role as a scavenger receptor, the protein rapidly cycles between the plasma membrane and early endosomes. [provided by RefSeq, Jul 2008]
Usage	Research use only



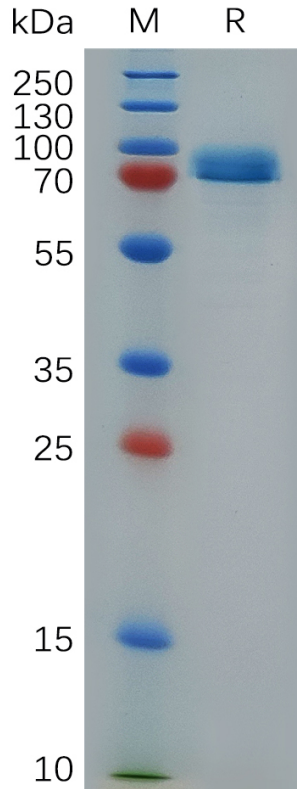


Figure 1. Human STAB1 Protein, hFc Tag on SDS-PAGE under reducing condition.

DIMABIO CONFIDENTIAL

