

**PRODUCT INFORMATION**

|   |   |
|---|---|
| <b>Target</b>                           | TACI  |
| <b>Synonyms</b>                         | CD267;TACI;TNFRSF13B  |
| <b>Description</b>                      | Recombinant human TACI Protein with C-terminal Human Fc tag   |
| <b>Delivery</b>                         | In Stock  |
| <b>Uniprot ID</b>                       | O14836  |
| <b>Expression Host</b>                  | HEK293  |
| <b>Tag</b>                              | C-Human Fc Tag  |
| <b>Molecular Characterization</b>       | TACI(Ser2-Ser165) hFc(Glu99-Ala330)   |
| <b>Molecular Weight</b>                 | The protein has a predicted molecular mass of 44.5 kDa after removal of the signal peptide. The apparent molecular mass of TACI-hFc is approximately 33-53 kDa due to glycosylation.  |
| <b>Purity</b>                           | The purity of the protein is greater than 95% as determined by SDS-PAGE and Coomassie blue staining.  |
| <b>Formulation &amp; Reconstitution</b> | Lyophilized from sterile PBS, pH 7.4. Normally 5% - 8% trehalose is added as protectants before lyophilization. Please see Certificate of Analysis for specific instructions of reconstitution.   |
| <b>Storage &amp; Shipping</b>           | Store at -20°C to -80°C for 12 months in lyophilized form. After reconstitution, if not intended for use within a month, aliquot and store at -80°C (Avoid repeated freezing and thawing). Lyophilized proteins are shipped at ambient temperature.   |
| <b>Background</b>                       | The protein encoded by this gene is a lymphocyte-specific member of the tumor necrosis factor (TNF) receptor superfamily. It interacts with calcium-modulator and cyclophilin ligand (CAML). The protein induces activation of the transcription factors NFAT, AP1, and NF-kappa-B and plays a crucial role in humoral immunity by interacting with a TNF ligand. This gene is located within the Smith-Magenis syndrome region on chromosome 17. |
| <b>Usage</b>                            | Research use only   |



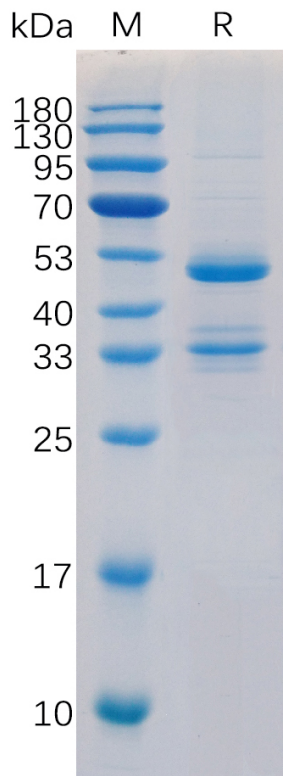


Figure 1. Human TACI Protein, hFc Tag on SDS-PAGE under reducing condition.

### Human TACI, hFc tagged protein ELISA

0.1  $\mu\text{g}$  of Human TACI, hFc tagged protein per well

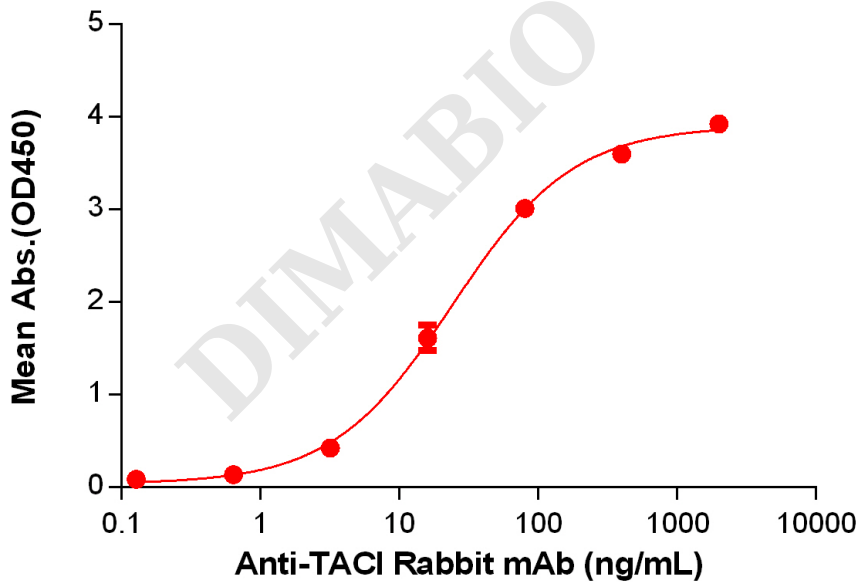


Figure 2. ELISA plate pre-coated by 1  $\mu\text{g}/\text{mL}$  (100  $\mu\text{L}/\text{well}$ ) Human TACI Protein, hFc Tag(PME100094) can bind Anti-TACI Rabbit mAb in a linear range of 3.2-80 ng/mL.

