

**PRODUCT INFORMATION**

<b>Target</b>	CD45
<b>Synonyms</b>	Ptprc;B220;L-CA;Ly-5;T200;CD45R;Lyt-4
<b>Description</b>	Recombinant mouse CD45 protein with C-terminal 6×His tag
<b>Delivery</b>	In Stock
<b>Uniprot ID</b>	P06800
<b>Expression Host</b>	HEK293
<b>Tag</b>	C-6×His Tag
<b>Molecular Characterization</b>	Mouse CD45(Gln26-Lys566) 6×His tag
<b>Molecular Weight</b>	The protein has a predicted molecular mass of 59.5 kDa after removal of the signal peptide. The apparent molecular mass of mCD45-His is approximately 130-250 kDa due to glycosylation.
<b>Purity</b>	The purity of the protein is greater than 85% as determined by SDS-PAGE and Coomassie blue staining.
<b>Formulation &amp; Reconstitution</b>	Lyophilized from sterile PBS, pH 7.4. Normally 5 % - 8% trehalose is added as protectants before lyophilization. Please see Certificate of Analysis for specific instructions of reconstitution.
<b>Storage &amp; Shipping</b>	Store at -20°C to -80°C for 12 months in lyophilized form. After reconstitution, if not intended for use within a month, aliquot and store at -80°C (Avoid repeated freezing and thawing). Lyophilized proteins are shipped at ambient temperature.
<b>Background</b>	Enables several functions, including heparan sulfate proteoglycan binding activity; heparin binding activity; and protein tyrosine phosphatase activity. Involved in several processes, including lymphocyte differentiation; positive regulation of macromolecule metabolic process; and regulation of signal transduction. Acts upstream of or within several processes, including lymphocyte differentiation; positive regulation of lymphocyte activation; and regulation of protein phosphorylation. Located in external side of plasma membrane; focal adhesion; and membrane raft. Is expressed in several structures, including 3rd branchial arch; alimentary system; cardiovascular system; hemolymphoid system; and placenta. Used to study systemic lupus erythematosus. Human ortholog(s) of this gene implicated in hepatitis C; multiple sclerosis; severe combined immunodeficiency; and severe combined immunodeficiency, autosomal recessive, T cell-negative, B cell-positive, Nk cell-positive. Orthologous to human PTPRC (protein tyrosine phosphatase receptor type C). [provided by Alliance of Genome Resources, Apr 2022]
<b>Usage</b>	Research use only
<b>Conjugate</b>	Unconjugated



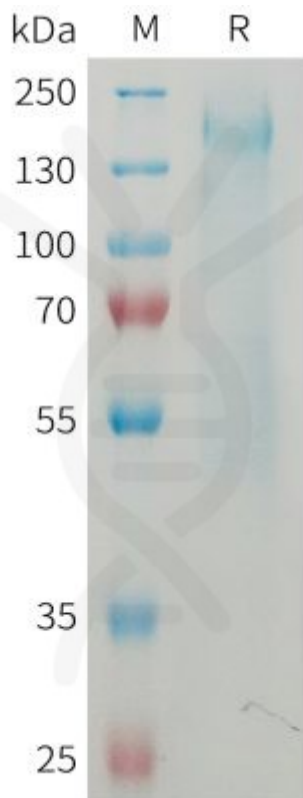


Figure 1. Mouse CD45 Protein, His Tag on SDS-PAGE under reducing condition.

DIMABIO CONFIDENTIAL

