

PRODUCT INFORMATION

Target	GUCY2C
Synonyms	Gcc;GC-C
Description	Recombinant mouse GUCY2C protein with C-terminal 6×His tag
Delivery	In Stock
Uniprot ID	Q3UWA6
Expression Host	HEK293
Tag	C-6×His Tag
Molecular Characterization	Mouse GUCY2C(Val20-Met433) 6×His tag
Molecular Weight	The protein has a predicted molecular mass of 47.9 kDa after removal of the signal peptide. The apparent molecular mass of mGUCY2C-His is approximately 55-130 kDa due to glycosylation.
Purity	The purity of the protein is greater than 85% as determined by SDS-PAGE and Coomassie blue staining.
Formulation & Reconstitution	Lyophilized from sterile PBS, pH 7.4. Normally 5 % - 8% trehalose is added as protectants before lyophilization. Please see Certificate of Analysis for specific instructions of reconstitution.
Storage & Shipping	Store at -20°C to -80°C for 12 months in lyophilized form. After reconstitution, if not intended for use within a month, aliquot and store at -80°C (Avoid repeated freezing and thawing). Lyophilized proteins are shipped at ambient temperature.
Background	Enables guanylate cyclase activity. Acts upstream of or within regulation of cell population proliferation and response to toxic substance. Predicted to be located in endoplasmic reticulum and membrane. Predicted to be integral component of membrane. Predicted to be active in plasma membrane. Is expressed in alimentary system and liver. Used to study abdominal obesity-metabolic syndrome and obesity. Human ortholog(s) of this gene implicated in congenital diarrhea 6. Orthologous to human GUCY2C (guanylate cyclase 2C). [provided by Alliance of Genome Resources, Apr 2022]
Usage	Research use only
Conjugate	Unconjugated



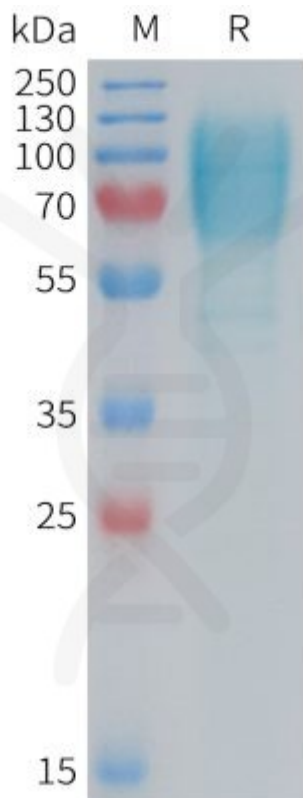


Figure 1. Mouse GUCY2C Protein, His Tag on SDS-PAGE under reducing condition.

DIMABIO CONFIDENTIAL

