

**PRODUCT INFORMATION**

|   |   |
|---|---|
| <b>Target</b>                           | HBEGF   |
| <b>Synonyms</b>                         | AW047313;Dtr;Dts;Hegfl  |
| <b>Description</b>                      | Recombinant mouse HBEGF(24-160) protein with C-terminal human Fc tag  |
| <b>Delivery</b>                         | In Stock  |
| <b>Uniprot ID</b>                       | Q06186  |
| <b>Expression Host</b>                  | HEK293  |
| <b>Tag</b>                              | C-Human Fc Tag  |
| <b>Molecular Characterization</b>       | Mouse HBEGF(Glu24-Thr160) hFc(Glu99-Ala330)   |
| <b>Molecular Weight</b>                 | The protein has a predicted molecular mass of 41.3 kDa after removal of the signal peptide. The apparent molecular mass of mHBEGF(24-160)-hFc is approximately 40-55 kDa due to glycosylation.  |
| <b>Purity</b>                           | The purity of the protein is greater than 95% as determined by SDS-PAGE and Coomassie blue staining.  |
| <b>Formulation &amp; Reconstitution</b> | Lyophilized from sterile PBS, pH 7.4. Normally 5% - 8% trehalose is added as protectants before lyophilization. Please see Certificate of Analysis for specific instructions of reconstitution.   |
| <b>Storage &amp; Shipping</b>           | Store at -20°C to -80°C for 12 months in lyophilized form. After reconstitution, if not intended for use within a month, aliquot and store at -80°C (Avoid repeated freezing and thawing). Lyophilized proteins are shipped at ambient temperature.   |
| <b>Background</b>                       | Growth factor that mediates its effects via EGFR, ERBB2 and ERBB4. Required for normal cardiac valve formation and normal heart function. Promotes smooth muscle cell proliferation. May be involved in macrophage-mediated cellular proliferation. It is mitogenic for fibroblasts, but not endothelial cells. It is able to bind EGF receptor/EGFR with higher affinity than EGF itself and is a far more potent mitogen for smooth muscle cells than EGF. Also acts as a diphtheria toxin receptor.[UniProtKB/Swiss-Prot Function] |
| <b>Usage</b>                            | Research use only   |
| <b>Conjugate</b>                        | Unconjugated  |



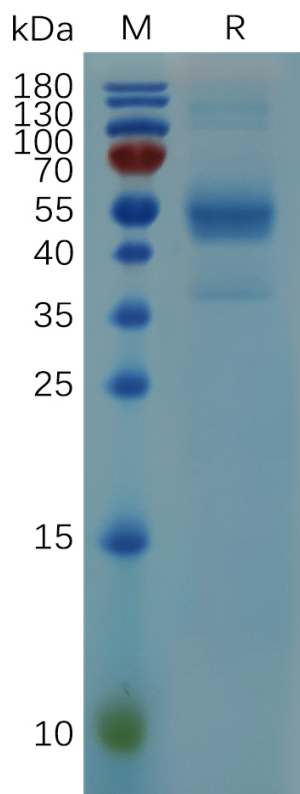


Figure 1. Mouse HBEGF (24-160) Protein, hFc Tag on SDS-PAGE under reducing condition.

DIMABIO CONFIDENTIAL

