

**PRODUCT INFORMATION**

<b>Common Name</b>	GC-182,IMAB-362,IMAB362,claudiximab
<b>Conjugate</b>	PE-conjugated
<b>Synonyms</b>	GC-182;MAB-362;MAB362;laudiximab
<b>Applications</b>	Flow Cyt
<b>Recommended Dilutions</b>	Flow Cyt 1:100
<b>Formulation &amp; Reconstitution</b>	Liquid□PBS with 0.05% Proclin300, 1% BSA
<b>Host Species</b>	Chimeric
<b>IgG type</b>	IgG1
<b>Reactivity</b>	Human
<b>Target</b>	CLDN18.2
<b>Uniprot ID</b>	P56856
<b>Description</b>	PE-conjugated Anti-CLDN18.2 (zolbetuximab biosimilar) mAb
<b>Delivery</b>	Under Development
<b>Storage &amp; Shipping</b>	Store at 2°C-8°C for 6 months
<b>Background</b>	Research grade biosimilar. Not for use in therapeutic or diagnostic procedures for humans or animals.
<b>Usage</b>	Research use only
<b>DIMA Disclaimer</b>	All DIMA recombinant antibodies are genuinely generated by DIMA Biotech. They are all under patent application. Any protein sequencing or reverse engineering attempt is prohibited. We are actively scrutinizing all patent application to ensure no IP infringement.



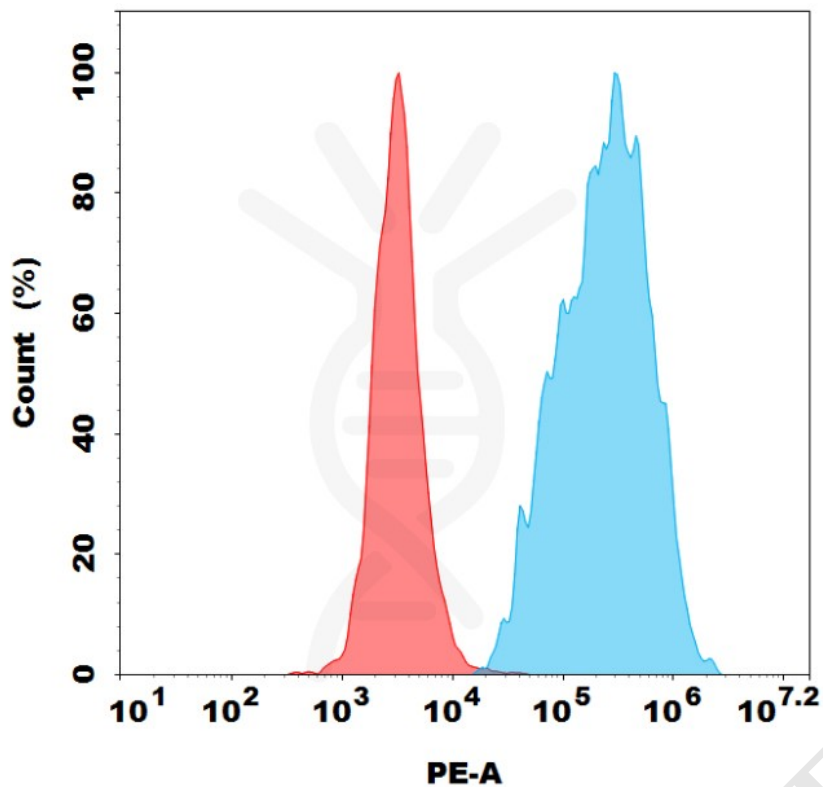


Figure 1. Flow cytometry analysis with 0.5ul/test Anti-CLDN18.2 (zolbetuximab biosimilar) on AGS-CLDN18.2 stable expression cell line (Blue histogram) or 293T (Red histogram).

DIMABIO CONFIDENTIAL

